

**Submission ID:** S-00107  
**Date Received:** 6/8/25, 9:07 pm  
**Name:** Lachlan O'Neill  
**Submission Topic:** Electorate Boundaries  
**Electoral District:** Coomera  
**Multiple Signatories:** No

**Submission:**

My submission is attached.

Thank you for considering

To the Queensland Redistribution Commission

BY ONLINE SUBMISSION: 6/08/2025

My submission relates to my region of the northern Gold Coast, specifically the electorate of Coomera.

As the commission is aware, Coomera is the state's largest electorate in terms of electors. Coomera currently houses 55,340 electors and this is predicted to increase to 71,060 in 2032. As such, the Coomera electorate will need to be reduced to remain within the quota, now and into the future. However, this should be done with particular care to ensure these growing communities are kept together and given proper representation to prosper into the future.

**As such, it is my submission that the Coomera electorate be reduced by using the Pimpama River as the Northern border, maintaining the existing Eastern border, reducing the Western border to exclude Cedar Creek and extending the Southern border to the Coomera River to restore the parts of the Upper Coomera and Coomera communities previously segregated to the Theodore electorate. (Appendix 1).**

As can be seen from Appendix 2, Figure 1, this suggested configuration would result in a reduction of 18,172 electors, while, as shown in Figure 2, also allowing 6,573 electors from Upper Coomera and Coomera to be restored to the electorate.

**This would result in an electorate with 43,741 electors, within the 36,248-44,290 band currently being sought.** While the current 2032 projection for this suggested configuration is 57,628 electors, this being above the commission's projected sought range, for the reasons outlined below, it is important to keep these areas of growth together for this redistribution cycle.

Given that the surrounding electorates of Jordan and Logan are significantly over quota it is evident that restructuring of the corridor south of Brisbane is required. However, I strongly recommend that the commission does not consider separating the Pimpama, Coomera and Upper Coomera Communities. It is evident that these are the communities in Coomera that have and will continue to have the most substantial increase in electors in the future. Currently, the infrastructure and services in the Coomera Electorate is not capable of accommodating such a large increase in population and while they are currently being improved, this needs to continue into the future.

The risk posed by separating these key communities into different electorates is that it creates the potential for competition between them. This will risk the infrastructure and services, that this growing population requires, not being delivered. Having a single MP representing these communities will ensure they are attuned to delivering the services and infrastructure that the area requires. In short, while future growth is still expected in these key communities, separating them would cause significant damage to the communities and risk not delivering the essential infrastructure and services this growth requires. Reducing the Northern border of Coomera electorate to the Pimpama River will allow these communities to remain together.

The Pimpama River provides a perfect natural northern border for a revised Coomera electorate. Utilising this allows the electorate to focus on the three main areas of substantial growth within the region, those being Pimpama, Coomera and Upper Coomera. It also recharacterizes the nature of the electorate as a suburban electorate at the northern top of the Gold Coast, releasing those more rural communities closer to Beenleigh and the Redlands. This is a distinction that is already made in other jurisdictions, for instance the Pimpama River is used as the Northern border for the Gold Coast Judicial Jurisdiction, with Jacobs Well, Ormeau, Yatala and surrounding areas being deemed under

Beenleigh's jurisdiction. Having regard to these factors, it seems a natural solution where a reduction must be made, to use the Pimpama River as the Northern border of the re-configured Coomera Electorate.

At the same time, extending the Southern border of the electorate to the Coomera River would allow those areas of Coomera and Upper Coomera to rejoin the electorate in which the majority of their communities reside. As they are above the Coomera River, and for all intents and purposes part of the Coomera community, these electors have been largely ignored by their elected representative in Theodore, as their issues are largely Coomera issues (despite not technically residing with the Coomera electorate). Therefore, restoring them to the Coomera Electorate would result in their voices being heard – this would be in the better interests of the community at large.

As stated above, the communities of Pimpama, Upper Coomera and Coomera should be maintained in a single electorate between the Pimpama and Coomera Rivers.

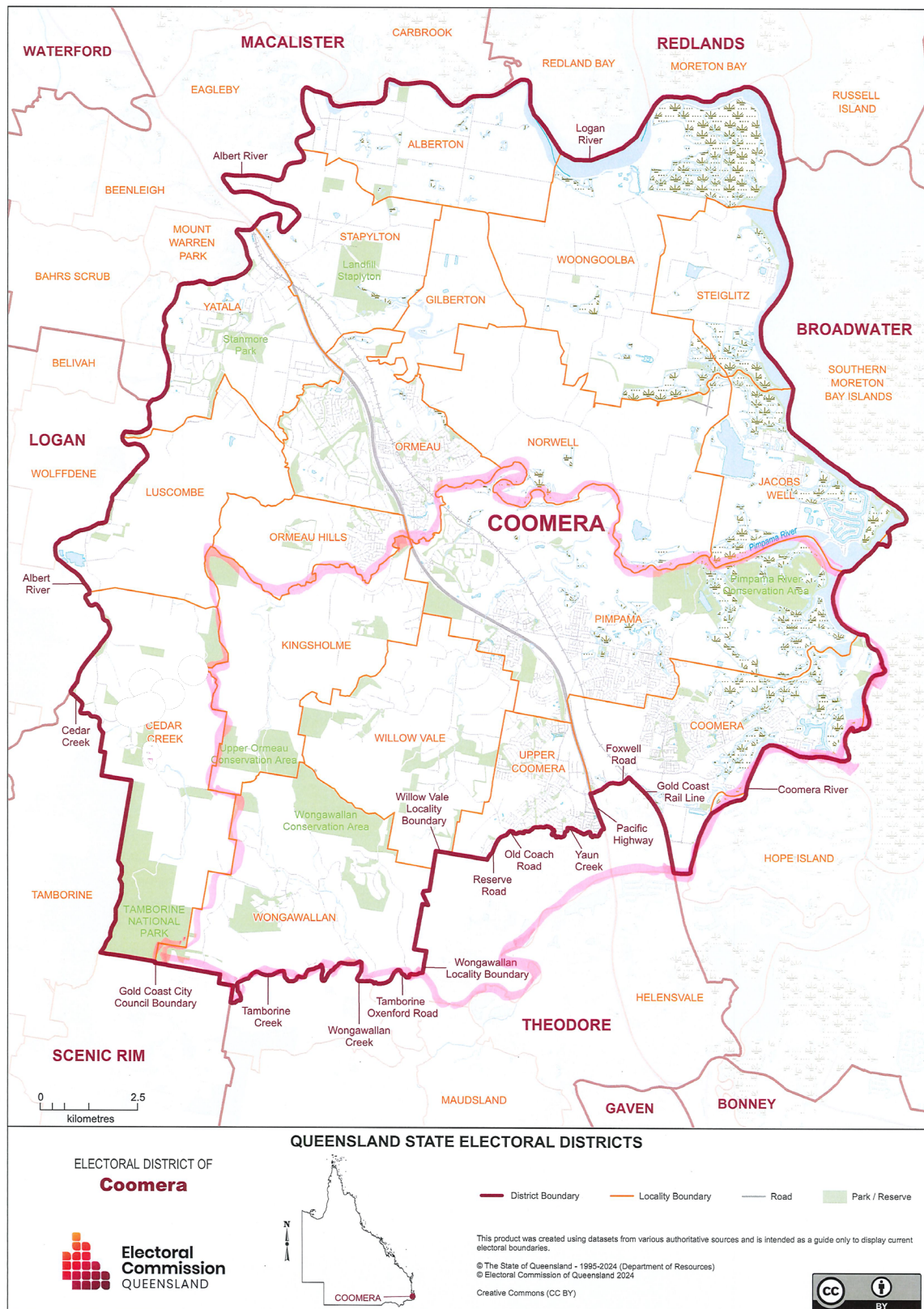
This will best serve all the communities in this growing region.

Thank you for considering this submission.

Yours faithfully,

Lachlan O'Neill

## Appendix 1



## Appendix 2

### Enrolment by SA1 Data

**Figure 1. Suggested Removal from Coomera Electorate**

Local Area	SA1 Code	Enrolment	Projected Enrolment	Area(sqkm)
Alberton	30907125407	267	289	4.966453
	30907125408	185	204	11.23259
Jacobs Well	30907125403	542	656	1.004059
	30907125404	490	514	0.624879
	30907125405	434	462	0.876753
	30907125406	1021	1565	3.879833
Steiglitz/ Woongoolba	30907125402	418	436	0.552122
	30907125409	332	370	41.35707
Stapylton	30907155221	173	219	14.939
	30907155223	165	175	0.073984
Norwell /Giberton	30907155410	268	328	0.114633
Luscombe	30907155328	214	251	12.78692
	30907155322	146	165	10.78624
Ormeau/ Ormeau Hills	30907155306	131	167	0.40718
	30907155309	194	223	0.294233
	30907155310	344	384	1.526201
	30907155311	351	377	0.24698
	30907155313	146	169	0.283407
	30907155314	382	404	0.246361
	30907155315	172	187	0.104425
	30907155319	313	339	0.17084
	30907155320	424	426	0.184403
	30907155321	211	237	0.117864
	30907155323	386	420	0.285774
	30907155329	296	318	0.873192
	30907155317	322	340	0.260118
	30907155303	278	301	0.110109
	30907155301	281	304	0.107659
	30907155304	227	250	0.339433
	30907155308	692	673	0.454174
	30907155312	478	644	0.44128
	30907155322	146	165	10.78624
	30907155324	215	242	0.655834
	30907155326	412	448	1.559148
	30907155327	266	297	0.10933

	30907155202	284	293	0.194
	30907155203	355	355	0.147309
	30907155204	290	294	0.217968
	30907155205	271	260	0.220984
	30907155206	191	248	0.119593
	30907155207	188	199	0.147256
	30907155208	361	368	0.150187
	30907155209	344	465	0.171381
	30907155210	334	383	0.249279
	30907155211	348	359	0.435313
	30907155212	8	7	0.482496
	30907155213	381	386	0.19624
	30907155214	243	250	0.129618
	30907155216	272	274	0.12892
	30907155217	261	264	0.18787
	30907155218	278	285	0.124327
	30907155220	184	189	0.08026
	30907155222	559	1239	0.980152
	30907155224	251	248	0.396909
Yatala	30907155302	337	363	3.310906
	30907155305	317	344	1.472851
	30907155316	172	197	0.622949
	30907155325	241	263	1.99718
	30907155318	29	29	6.467991
Cedar Creek	30907155602	351	351	25.9502
<b>Total</b>		<b>18172</b>	<b>20862</b>	

Figure 2. Suggested Addition to Coomera Electorate

Local Area	SA1 Code	Enrolment	Projected Enrolment	Area(sqkm)
Upper Coomera	30907155704	197	208	0.108758
	30907155708	203	362	0.275352
	30907155710	296	293	0.155616
	30907155719	534	908	2.066382
	30907155723	271	338	0.196722
	30907155725	394	410	0.3182
	30907155728	328	323	0.179989
	30907155732	229	236	0.117307
	30907155733	320	319	0.142093
	30907155734	175	177	0.260524
	30907155736	208	211	0.099193
	30907155737	172	177	0.085956
	30907155739	308	382	0.139127
	30907155742	217	216	0.090657

	30907155743	240	243	0.370598
	30907155740	134	144	0.051216
	30907155604	437	437	3.315525
	30907155613	331	351	0.874156
	30907155626	435	516	0.814927
Coomera	30907125110	311	316	0.229282
	30907125111	310	302	0.122423
	30907125134	300	312	0.130539
	30907125144	223	249	0.224785
<b>Total</b>		<b>6573</b>	<b>7430</b>	