

Submission ID: O-0670
Date Received: 8/4/26, 4:59 pm
Name: Sonja and Peter Doyle
Submission Topic: Electorate Boundaries
Electoral District: Gregory

Submission:

See below

Submission Attachments

Email - Sonja and Peter Doyle - Gregory electorate.pdf

To: Queensland Redistribution Commission

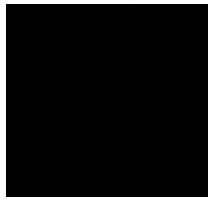
Email: QRCsubmissions@ecq.qld.gov.au

SUBMISSION - GREGORY ELECTORATE

**OBJECTIONS TO THE PROPOSED GREGORY ELECTORATE BOUNDARY
CHANGES THAT DIVIDE THE BLACKALL-TAMBO REGIONAL COUNCIL**

From: Sonja Doyle and J. Peter Doyle

Address:



Email:



Introduction

The proposed Gregory Electorate Boundary Changes, to split the Blackall-Tambo Regional Council along the old Blackall and Tambo Shire Council boundary is divisive in the extreme.

The proposed changes to the Blackall-Tambo Local Government Area will formally change how our region is represented at a state level.

In 2008, the Blackall and Tambo shires and their communities, were forced into amalgamation, by the Beattie/Bligh State government.

18 years ago, this forced amalgamation, was most unpopular, but to the credit of the people living in the Blackall and Tambo Communities, it has been made to work! Blackall and Tambo are now fully integrated, economically, socially and regionally.

As long term residents of Blackall-Tambo, we ask that the entire Blackall-Tambo Regional Council, remain within the Gregory Electorate.

Community of Interest

- Health – The Blackall and Tambo Hospitals and General practices are in the Central West Health Region based on Longreach.

Visiting Specialist services, maternal, pediatric, mental health, occupational therapy, podiatry, etc. are organized by Longreach

Based Central West Health...the Blackall doctors visit Tambo...our ambulances are based in Blackall and Tambo. Blackall and Tambo health services are Central West Based. We are not South West based.

- Education – As with health, our State Schools and Catholic Schools are Central West Based.
- Social – Blackall and Tambo are included in the Central West Cluster of Catholic Parishes, in the Rockhampton diocese...we are not in the South West.
- Cultural –In both Blackall and Tambo, the Cultural Centres, the Art Galleries, the Show Grounds, Race Courses, Aquatic Centres, the Blackall Historical Woolscour, the Cemeteries, are maintained by the Blackall-Tambo Regional Council. The Blackall-Tambo Regional Council supports all local sporting clubs.

Communication and Travel within electoral districts –UHF repeater towers are owned and maintained by the Blackall-Tambo Regional Council within the local government area. This is an essential service, as mobile phone coverage is limited or non-existent in remote areas.

Roads and aerodromes, within the Blackall-Tambo region are maintained by the Regional Council.

Economic – Blackall is the biggest cattle selling centre in the Central West. The Blackall Saleyards are owned and run by the Blackall-Tambo Regional Council. The Blackall-Tambo Region is now mainly, a cattle breeding, beef producing area, with some wool growers and sheep meat producers. The Blackall-Tambo Regional Council is the largest employer.

Physical Features of the Proposed Electoral District

I wish to remind the Queensland Redistribution Commission, that within the Blackall-Tambo Region, Community of Interest factors come before the physical features of our region.

e.g. Where we live is the watershed of the Barcoo and Langlo systems. Blackall-Tambo is our community...our Regional Council. We wish to remain part of the Blackall-Tambo Region, in the Gregory Electoral District. Economically and Socially, the Central West is our area...not the South West.

Boundaries of Existing Electoral Districts – Weightage for Huge Regional Electorates

For there to be proper parliamentary representation of the people in the huge electorates of Gregory, Warrego, Traeger and Cook, it is imperative that % of weightage be increased, or that a way be found for the area of these electorates to remain as is, or for the area of each large unwieldy electorate to be reduced. The 10% variance is out-of-date for the remote, regional electorates.


In a parliamentary democracy, it is only right and just that each elector be able to contact their local member as easily as possible...and that the local member of parliament visit for community events. However, where communications are poor to non-existent and with huge distances involved, it can be very difficult and expensive, for the parliamentary representative to service their electorate properly.

Whereas in the South East Corner of Queensland, where the electorates are small in area, parliamentarians, if necessary, could attend a number of community events, in their electorates, in one day!

Conclusion

In the proposed Gregory redistribution, as the number of potential electors in the Blackall-Tambo area, is small, approximately 600, surely a way can be found by the QRC, to keep our Blackall-Tambo Local Government area intact.

For community cohesion, it is essential that the Queensland Redistribution Commission, reconsiders the proposed boundary changes to the Gregory electorate, so as, to ensure that the entire Blackall-Tambo Regional Council, remains within the Gregory Electorate.



Sonja L. Doyle and U. Peter Doyle

8th April 2026



2015
LOCAL GOVERNMENT AREA
BOUNDARIES

BLACKALL-TAMBO
REGIONAL COUNCIL

- Town
- Local Government Area Boundary
- Locality Boundary
- Highway
- Major Road
- Minor Road
- Railway
- Watercourse / Waterbody
- Reserve / Park

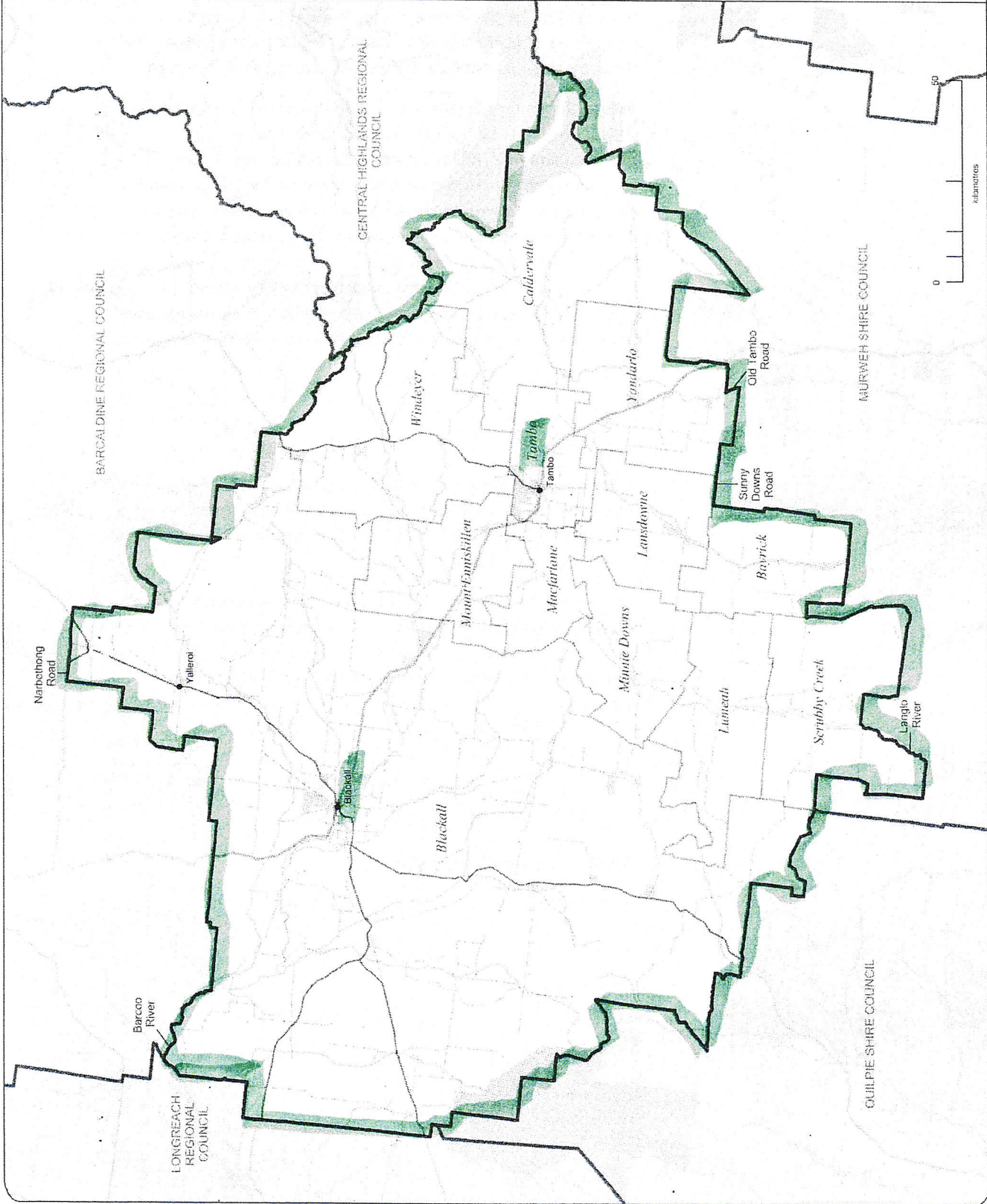
Location Map



DISCLAIMER

While every care has been taken to ensure the accuracy of this product, the Electoral Commission Queensland (ECCO) makes no representation or warranty about its accuracy, or any other information, for any liability, purpose and disclaimer of responsibility, and is registered for all expenses, losses, damages (including indirect and consequential damage) and cost which might be incurred as a result of the data being inaccurate or incomplete in any way and for any reason.

This map has been produced by the ECCO as a guide only, to show electoral boundaries. It is not an official electoral boundary map.
 © Electoral Commission of Queensland 2015 (Local Government Change Commissioner)
 © The State of Queensland - 2015 (Department of Natural Resources and Mines)
 © 2015 Fliley Boxes Software Pty Ltd. All rights reserved.



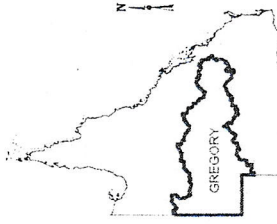


Electoral Commission
QUEENSLAND

QUEENSLAND STATE ELECTORAL DISTRICTS

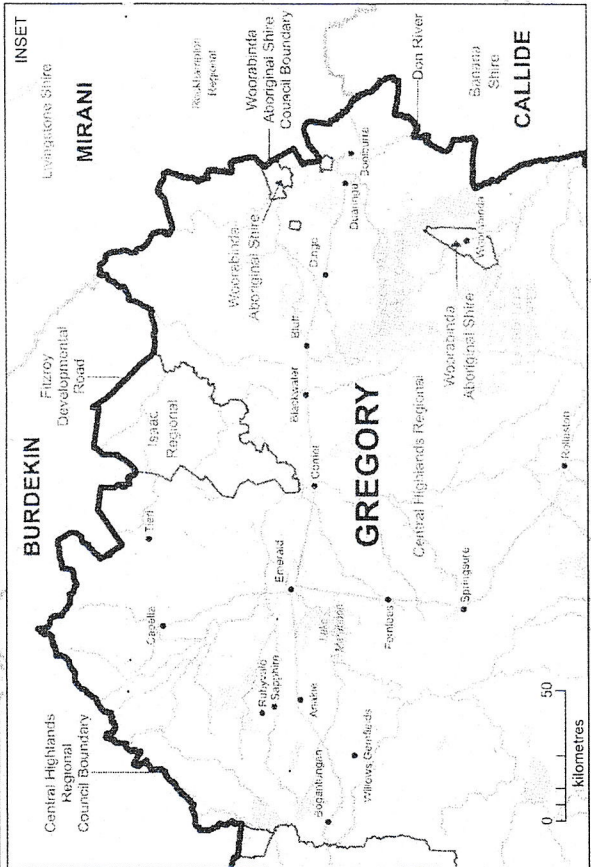
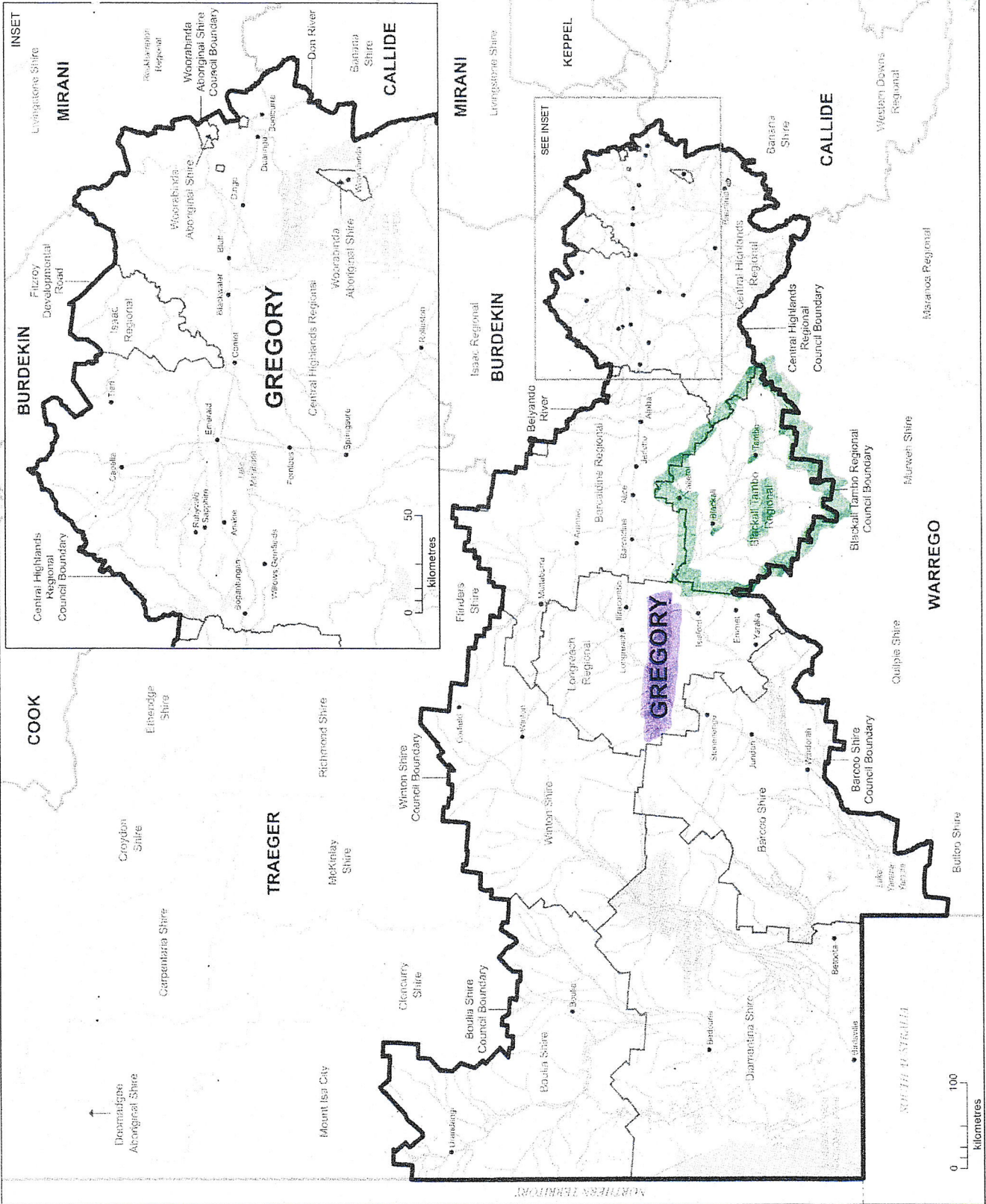
ELECTORAL DISTRICT OF Gregory

- District Boundary
- Locality Boundary
- Road
- Park / Reserve



This product was created using datasets from the Queensland Government, which are made available under a Creative Commons Attribution 4.0 International License. It is provided as a guide only to display current electoral boundaries.

© The State of Queensland (Department of Resources)
© Electoral Commission of Queensland 2024
Creative Commons (CC BY)



NORTHERN TERRITORY

SOUTH AUSTRALIA



GREGORY

- Proposed state electoral district
- Current state electoral district
- Local government area (LGA)

