

Submission ID: S-00104
Date Received: 6/8/25, 3:14 pm
Name: Abraham Gubler
Submission Topic: Electorate Boundaries
Electoral District: Springwood
Multiple Signatories: No

Submission:

This submission is in relation to the electorates of SPRINGWOOD, CAPALABA, OODGEROO and REDLANDS. The system would not allow me to select multiple electorates. Submission is attached .pdf.

REDLANDS REDISTRIBUTION 2025

Submission to 2025 Queensland state electoral redistribution by the Queensland Redistribution Commission.

This submission is focused on the **electoral boundaries** of CAPALABA, OODGEROO, SPRINGWOOD and REDLANDS electorates (names capitalised for clarity throughout when referring to the electorates). This submission is unconcerned with the naming of electorates.

The Challenge

Currently the state representation of the Redlands, within the Redland City Council boundaries (City of Redland), faces several challenges. There is the legacy split where 6,000 Redlands electors, in Sheldon and Mount Cotton, are siphoned off into the Logan based SPRINGWOOD electorate (elec.

Two of the City of Redland seats are below quota, OODGEROO at -12% and CAPALABA at -6%, while REDLANDS is 8% above quota. Without any redistribution the predicted growth out to 2032 will exacerbate these quota challenges. Driving Oodgeroo to 15% below, CAPALABA to 17% below and REDLANDS to 7% above.

However, if the Sheldon-Mount Cotton area was combined with the rest of the Redlands our city will have enough electors for almost exactly three quotas both now and in the future. This would mean notional electorates of 40,936 in 2025, being only 1.7% above the current, May 2025, quota of 40,264. For the predicted June 2032 quota of 44,679 these electorates will be 43,272 being only 3.1% below quota.

Without uniting the City of Redland into three equal electorates its possible the siphoning will get worse creating more seats like SPRINGWOOD where small elements of Redland interest are diluted into bigger Logan or Brisbane based seats.

The Author

I am a state elector of SPRINGWOOD and local elector and rate payer of the Redland City Council living in Mount Cotton. I have an interest in geography and how political borders impact local communities. I am not a member of a political party and have no intention of joining one. Abraham Gubler,

The Siphoning

Electorates boundaries need to be flexible to maintain the even distribution of quotas across Queensland. But if your area is split off from your geographic region and is then added as a minority to another normally separate area it is unlikely your needs can be met in competition. This is the case for Sheldon-Mount Cotton where they are now a ~15% part of SPRINGWOOD.

The electorate of SPRINGWOOD is totally focused on the City of Logan suburbs of Rochedale South, Springwood, Daisy Hill and Shailer Par. While adjoining on a map both areas are separated by one of the most rugged mountain valley areas in Greater Brisbane. There are no natural, frequently used lines of communication within the electorate from Sheldon-Mount Cotton to the Logan suburbs. It's impossible to drive from the Logan side to Sheldon-Mount Cotton and stay within the electorate. The only connecting road, Ford Road, is actually a boundary with the electorate of MANSFIELD. This is also a very steep and generally inaccessible country road to other than local traffic.

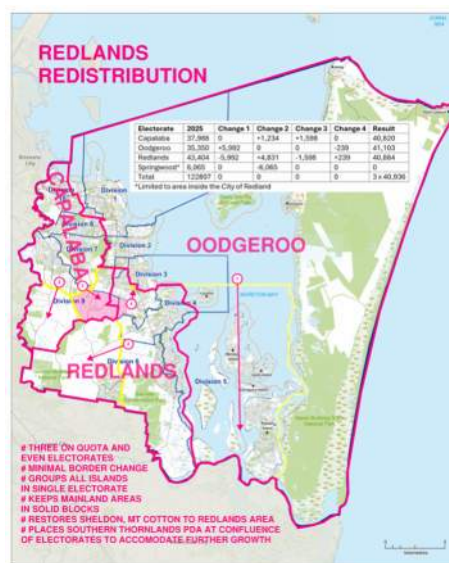
The only common service shared across the electorate of SPRINGWOOD is the state member of parliament. Education, health, law, policing, emergency services, electricity, transport are all separated. Sheldon-Mount Cotton shares all these services with those used by the electorates in the City of Redland or to the south some services are shared with the state electorate of MACALISTER.

While the current state member is a competent and well-liked his natural concerns are for the interests of 85% of this electorate. This has been demonstrated with the 50c public transport campaign. This is of great benefit for people living in the Logan side of SPRINGWOOD where they have access to major bus routes and new improved busways. But for the Sheldon-Mount Cotton area it is mostly meaningless, having almost no access to public transport.

It's clear the interests of Sheldon-Mount Cotton are common with those of the rest of the City of Redland. Voters in this area should elect a state member covering focused on this interest. Especially if this can help form on-quota electorates now and in the future.

The Solution, Option A

If one accepts the rejoining of Sheldon-Mount Cotton into their local area state electorates the challenge then becomes how to split up the City of Redland into three balanced electorates. This is less easy than it seems because the siphoned off area, Sheldon-Mount Cotton, is geographically adjacent to the over-quota electorate of Redlands. To accommodate these two needs any jostling at existing electorate boundaries will need to be extensive and un-natural without a fundamental reconsideration.



Option A, larger version below

The preferred solution proposed here (Option A) is that one distinct geographical area of the Redlands electorate: the Southern Moreton Bay Islands (SIMBI) be redistributed into the under-quota electorate of OODGEROO (Change 1). This is a natural fit as OODGEROO already has North Stradbroke Island and would consolidate all islands into a single electorate. This change 1 will move 5,992 electors from REDLANDS to OODGEROO.

Mount Cotton could then be combined with the truncated REDLANDS and Sheldon with CAPALABA (Change 2). This is another natural combination as each area shares their state infrastructure with the corresponding electorate.

This change would also lead naturally to CAPALABA growing into the Southern Thornlands Priority Development Area (PDA) (Change 3). This is one of the main locations of future City of Redland growth and would enable more balanced change over time. A small adjustment somewhere along the Thornlands border between OODGEROO and REDLANDS would then balance the electorates (Change 4).

The result of Option A would be three balanced electorates covering a distinct wider area and well placed to meet growth and governance challenges.

Option A

Electorate	2025	Change 1	Change 2	Change 3	Change 4	Result
CAPALABA	37,988	0	+1,234	+1,598	0	40,820
OODGEROO	35,350	+5,992	0	0	-239	41,103
REDLANDS	43,404	-5,992	+4,831	-1,598	+239	40,884
SPRINGWOOD*	6,065	0	-6,065	0	0	0

*Limited to area inside the City of Redland

The Solution, Option B

It could be argued that moving all the SMBI into the OODGEROO electorate from REDLANDS would break the natural relationship between the islands and their mainland ports. The City of Redland islands are linked with their closest harbour: North Stradbroke Island uses Toondah (Cleveland), Coochiemudlo Island uses Victoria Point and Macleay, Lamb, Karragarra, Russel Islands using Weinman Creek (Redland Bay). All of the SMBI ports are in the electorate of REDLANDS.

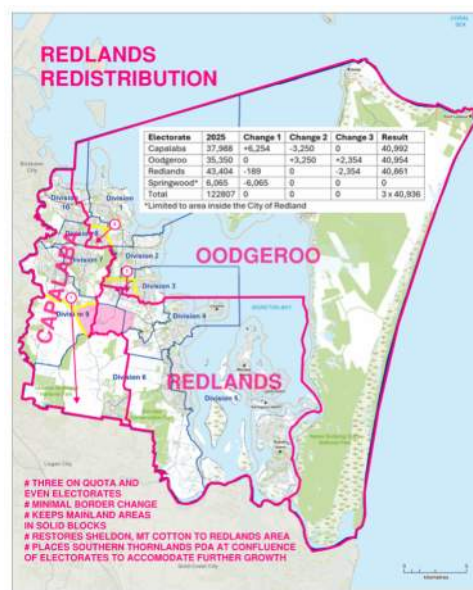
If required the SMBI could be maintained in the electorate of REDLANDS to keep the harbour-island relationships. This makes for a more difficult merging of Sheldon-Mount Cotton into the City of Redland electorates but its not impossible or unnatural.

This solution (Option B) would see Sheldon-Mount Cotton combined into CAPALABA maintaining most of the current REDLANDS border. A small part of REDLANDS at the Southern Thornlands PDA could also join CAPALABA pricing the shared coverage of this growth area (Change 1).

To increase the coverage of OODGEROO it could expand into CAPALABA at Wellington Point and Alexandra Hills (Change 2). This is a more natural change is it brings all of Wellington Point into OODGEROO and allows a distinct corner of Alexandra Hills to be split off. Other change options like at Birkdale make for much less distinct borders.

Also OODGEROO could expand into REDLANDS at the north west corner Thornlands (Change 3). This is a more natural change than other options and doesn't interfere with the Victoria Point to Coochiemudlo Island relationship.

This option is less natural than Option A. But REDLANDS can't keep the SMBI and take on Mount Cotton without cutting away its links to the Southern Thornlands PDA. This would be an unnatural border as this area is growing out of Victoria Point. And would not be a natural link with the seat of OODGEROO that would have to grow into it.



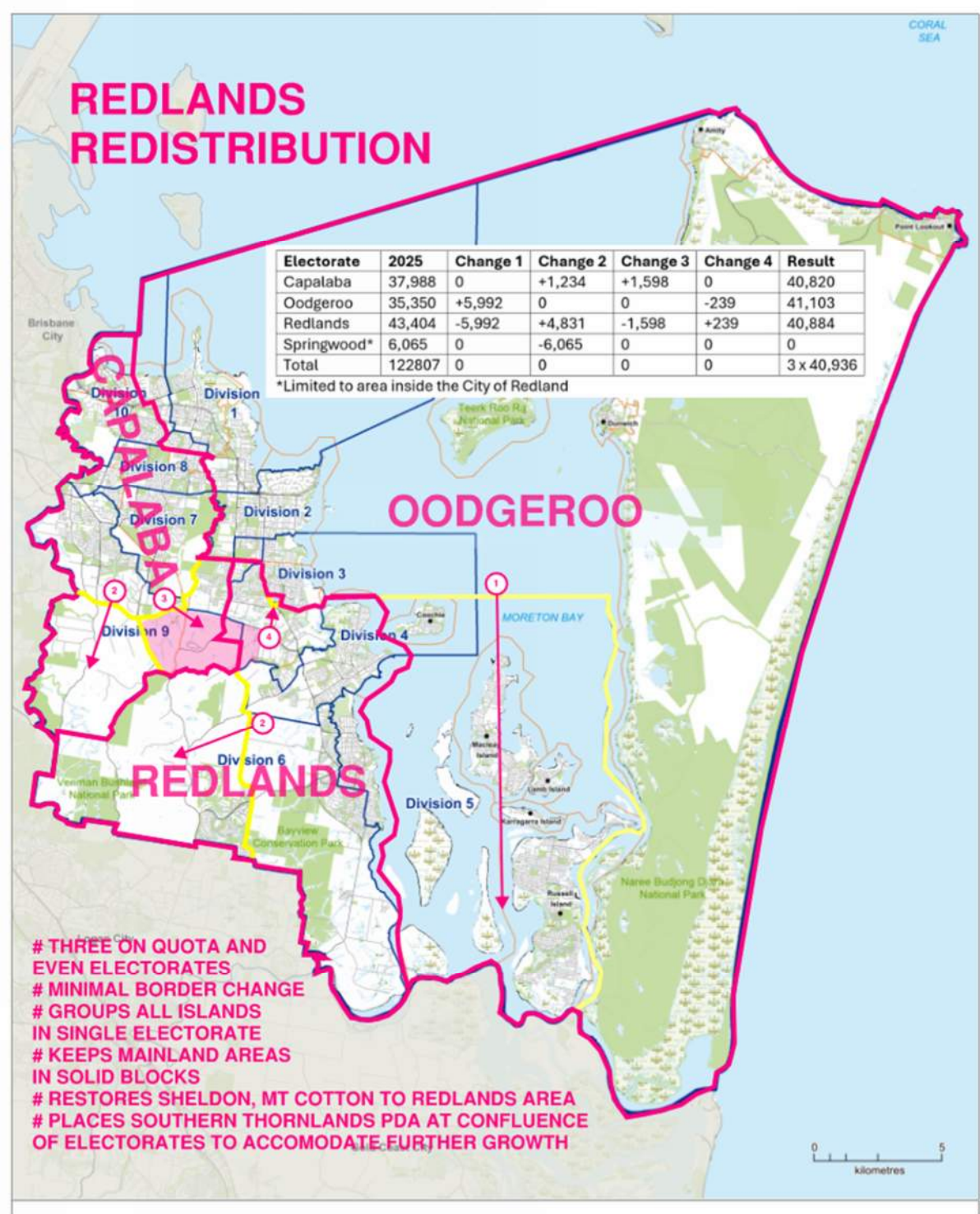
Option B, larger version below

Option B

Electorate	2025	Change 1	Change 2	Change 3	Result
CAPALABA	37,988	+6,254	-3,250	0	40,992
OODGEROO	35,350	0	+3,250	+2,354	40,954
REDLANDS	43,404	-189	0	-2,354	40,861
SPRINGWOOD*	6,065	-6,065	0	0	0

*Limited to area inside the City of Redland

Option A



Option B

