

Submission ID: S-00112
Date Received: 6/8/2025, 4:33 pm
Name: Gemmia Burden
Organisation Name: Queensland Greens
Submission Topic: Electorate Boundaries and Names
Electoral District: Algester; Aspley; Bulimba; Bundamba; Capalaba;
Chatsworth; Clayfield; Cooper; Everton; Ferny Grove;
Greenslopes; Inala; Ipswich; Jordan; Logan; Lytton;
Macalister; Maiwar; Mansfield; McConnel; Miller;
Moggill; Mount Ommaney; Nudgee; Oodgeroo;
Redlands; Sandgate; South Brisbane; Springwood;
Stafford; Stretton; Toohey; Waterford; Woodridge

Multiple Signatories: No

Submission:

See below

QUEENSLAND GREENS

A FUTURE FOR ALL OF US ▲

Wednesday 6 August 2025

The Commissioners
Queensland Redistribution Committee
by email only to QRCsubmissions@ecq.qld.gov.au

Reply to office@qld.greens.org.au

SUGGESTIONS ON THE 2025 STATE ELECTORAL REDISTRIBUTION

The Queensland Greens thanks the Queensland Redistribution Commission for this opportunity to contribute to the future of Queensland's electoral boundaries.

We have modelled changes to district boundaries within Brisbane, Ipswich and Logan City Councils in detail as these are areas we know more intimately than others. We have **attached** map shape files for our proposed boundaries in these areas.

In particular, our submission focuses on districts that have experienced significant boundary drift over the last several redistributions and have lost coherent communities of interest.

Several districts — Everton for example — no longer follow logical geographic features nor represent real communities as they exist today. Our recommendations seek to rectify that on a number of fronts.

We have made broad recommendations about districts outside this area — namely recommendations on where districts need to be abolished in order to facilitate the creation of new seats in very high population growth areas.

Kind regards

Gemmia Burden

Convenor
The Queensland Greens

General comments

Broadly, we would like to comment on the redistribution process itself.

The district of Coomera highlights the peril of ignoring development patterns and utilising linear population projections.

After the Commission conducted its last redistribution in 2017, Coomera was significantly overquota again within just 18 months of the redistribution.

While the Commission's discussion paper suggests some improvement in how projections are calculated, some localised projections remain out of step with other indicators like those detailed in documentation for Priority Development Areas.

The Commission's 2025 projections also appear to estimate most — if not all — future residents in many new developments are expected to be enrolled voters. Bells Creek and Ripley Valley are projecting tens of thousands of new voters.

This does not follow historical development and migration trends, with new build developments typically having a higher rate of permanent residents and non-voter populations.

It is effectively impossible to arrange districts at a metropolitan level such that each district would be within quota in both 2025 and 2032. As such, projected enrollment cannot be the key determining factor and should not be used to rule out proposals.

As the discussion paper points out, Queensland has seen unbalanced population growth over the last ten years. Previous redistributions have underestimated population growth in Brisbane's inner city and south-west which has exacerbated this.

Without Parliament increasing the total number of districts in Queensland as it did in 2017, districts that are within broader regions that have experienced significant population growth or stagnation will need to be abolished.

On current projections, an average district in 2032 will have twice the number of residents as an average district in 1986 (with significant variation within because of Queensland's historic malapportionment).

While this question is outside the scope of this redistribution, this table reinforces the pressing need to arrest population growth in Queensland's electoral districts.

Year	Population	# of MPs	Avg. pop. per seat
2032	6,162,780	93	66,266
2025	5,680,895	93	61,085
2017	4,960,965	93	53,344
		89	55,741
1986	2,648,778	89	29,762
		82	32,302
1972	1,924,658	82	23,471
		78	24,675
1960	1,502,286	78	19,260
		75	20,030
1950	1,238,278	75	16,510
		62	19,972
1932	939,097	62	15,147

Parliament in 2017 considered the average district too large, both in population and geography, to be manageable for an MP — especially regional MPs representing districts larger than many European countries. After the 2017 redistribution, the average district had 33,168 voters or 53,344 residents.

In order to merely ensure the average district in 2025 had the same number of voters as an average district in 2017, Queensland's Parliament would need to add another 20 districts, to a total of 113 seats.

To make the average district in 2032 have the same number of voters as one in 2017, would need to add another 37 districts, bringing the chamber to 130 seats — assuming a relatively consistent enrollment rate.

In fact, to offset projected population stagnation in very large western Queensland seats like Gregory and Traeger and avoid a scenario where the cumulative number of fictional "notional electors" do not equal another district's worth of voters by 2032, districts would need to have as few as 30,070 voters or 42,956 residents. That would mean a total of 143 seats, an increase of 50 seats.

Not only does this make elections markedly less democratic as everyday voters' votes are worth less over time, it also makes redistributions much more difficult. Rural and regional electorates will become less representative of genuine communities of interest.

Growing electorate sizes will render truly rural electorates a thing of the past with many rural seats' boundaries encroaching closer to major regional centres' outer

suburbs. Rural voters risk being outnumbered by regional suburban voters in rural seats, reducing the likelihood of having a representative that comes from rural towns.

In any case — and noting that this is out of scope of this Commission — this redistribution will need to radically redraw boundaries and abolish some long-standing districts to accommodate these disjointed growth patterns.

New seats to balance population growth

We recommend creating new districts centred on **Jimboomba** in Logan Valley and **Caboolture** in Brisbane's northern suburbs. Other growth areas have enough nearby districts under quota that boundary changes would be able to accommodate.

To facilitate these new seats, we recommend abolishing the districts of **Stretton** in Brisbane's inner south and **Thuwingowa** in Townsville's western suburbs. In Brisbane's inner south, explosive growth in Brisbane's outer south west and inner city squeezes a corridor of low growth seats. Four of the five divisions around Townsville are projected to be significantly underquota by 2032 with no nearby districts projected to grow enough to compensate for this.

Name changes

As a consequence of our recommended boundary changes, some seats will need to change their name. We have chosen names that are predominantly geographic in nature and better reflect the communities of interest in those seats.

Some of these name change recommendations equally apply to existing boundaries where boundary drift or changes in the urban fabric mean that the current name no longer makes intuitive sense to voters.

Recent redistributions have recommended names of historic figures to avoid having to rename districts too often. While we appreciate the intent, voters find non-geographic names confusing — particularly where there's federal electorates of the same name.

Where possible, we support the use of Aboriginal and Torres Strait Islander language place names and recommend these be used after appropriate consultation has been conducted with traditional owners by the Commission.

Bundamba becomes **Ripley**, as Bundamba shifts into Ipswich and Ripley Valley as a major corridor for development and population growth. While Bundamba Creek still flows through the district and is an Aboriginal place name, having the more well-known suburb outside the district would be confusing to voters.

Chatsworth becomes **Carindale**, having not had its namesake Chatsworth Road in its boundaries for a long time. Carindale is a major activity centre for the inner eastern suburbs.

Everton becomes **Bunyaville**, reflecting its reorientation along the north bank of Kedron Brook and southern edge of Bunyaville and Samford Conservation Parks. Bunyaville was also the historic name for the township that predates the suburbs of Everton Park and Everton Hills. While the suburbs of Ferny Hills, Arana Hills, Everton Hills and Bunya – around which this district is now centred – have been known locally as the Hills District since the 1960s, the existing Hill district in far north Queensland would make that name too confusing.

Ferny Grove becomes **Enoggera**, after losing Ferny Grove to Bunyaville and following the south bank of Kedron Brook and north bank of Enoggera Creek to the inner city. Enoggera is a major activity centre for the district and the presence of Gallipoli Barracks makes it a more appropriate name for the district.

Ipswich becomes **Tulmar**. Tulmar is the name for the Ipswich region in the Yagara language of the Jagera, Yuggera and Ugarapul traditional owners. This change reduces confusion for voters who live in the greater Ipswich region and council area but may not live within the electorate itself. With Bundamba being renamed due to realignment, renaming Ipswich to Tulmar would replace it as a local Aboriginal place name with one that is not going to be redistributed away.

Logan becomes **Logan Village**, reflecting its orientation around the township of Logan Village and to reduce confusion for voters who live in the greater Logan local government region and in the many similarly named areas, including Logan City, Loganholme, and Logan Reserve.

Macalister becomes **Dugulumba**, as Macalister shifts south and follows the Logan River. Dugulumba is the name for the river in the language of the Yugambeh traditional owners. Its current namesake, Arthur Macalister, has no immediate relationship with the region, having represented Ipswich and been born in Scotland. Macalister also confusingly shares the name with the town in the Western Downs region.

Springwood becomes **Daisy Hill**, being defined by the Pacific Highway to its west and Daisy Hill and Mount Cotton to its west. Daisy Hill proper becomes the geographic centre of the district.

Toohey becomes **Sunnybank**, as Toohey Forest shifts north into Miller and better reflects Sunnybank as a major activity centre and geographic centre of the new district.

Waterford becomes **Berrinba**, as both the suburb and the wetlands it is named after. Berrinba is an ecologically important site, the adjacent sports complex is a major community hub and the suburb is centred within the proposed district boundaries.

Boundary changes

Our focus has been on the parts of greater Brisbane we are most intimately familiar with. As such we are only providing detailed rationale for a small number of seats.

We have modelled broader boundary changes in our **attached** map shape files, most of which are consequential from either these changes below or the new seats above.

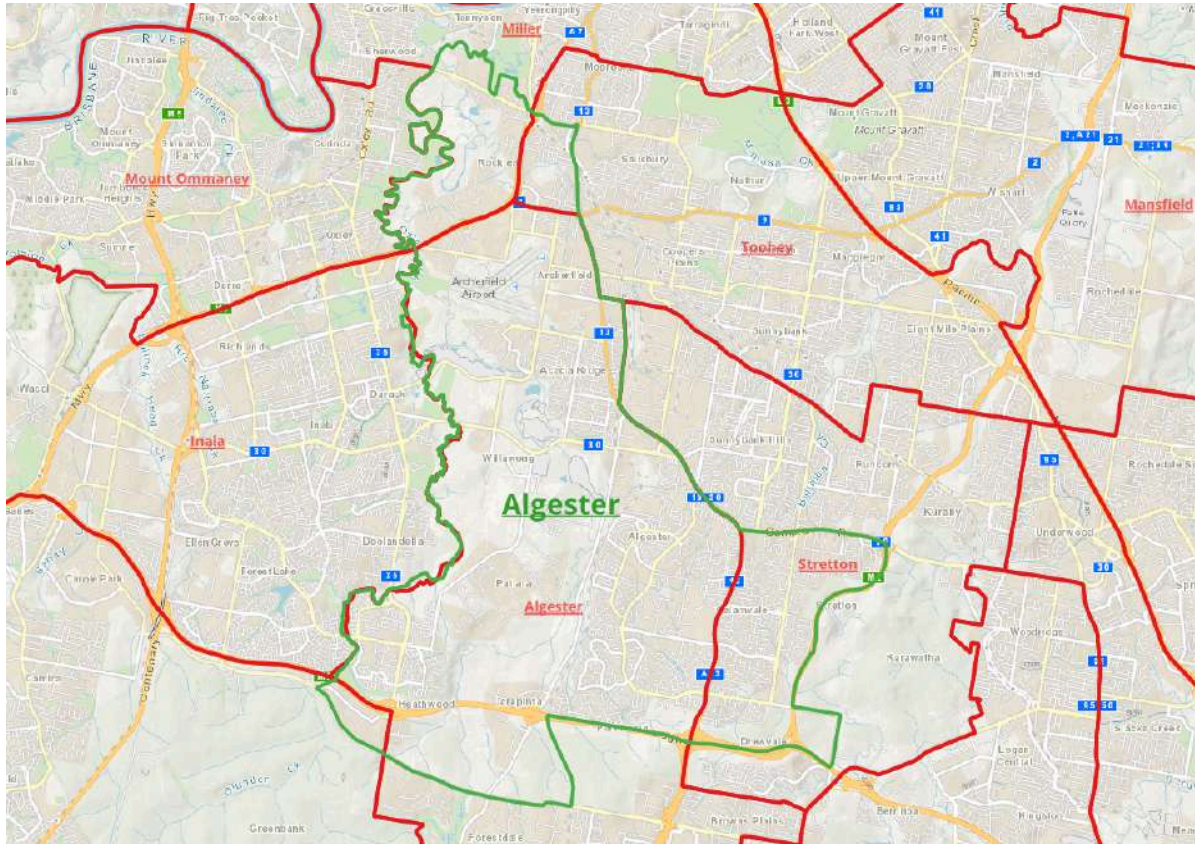
In the below maps, existing boundaries and district names are in red and our proposed boundaries and any name change recommendations are in green.

Our draft maps follow SA1 boundaries however there are instances where breaking SA1s to follow more natural boundaries like main roads, waterways or parks would be more sensible. We recommend the Commission prioritise natural boundaries over those in the Australian Statistical Geography Standard, which is due to change with the upcoming 2026 Census.

As mentioned before, our focus here was on preserving or reforging genuine communities of interest centred on major activity centres or transport corridors, bounded where possible by hard geographic boundaries.

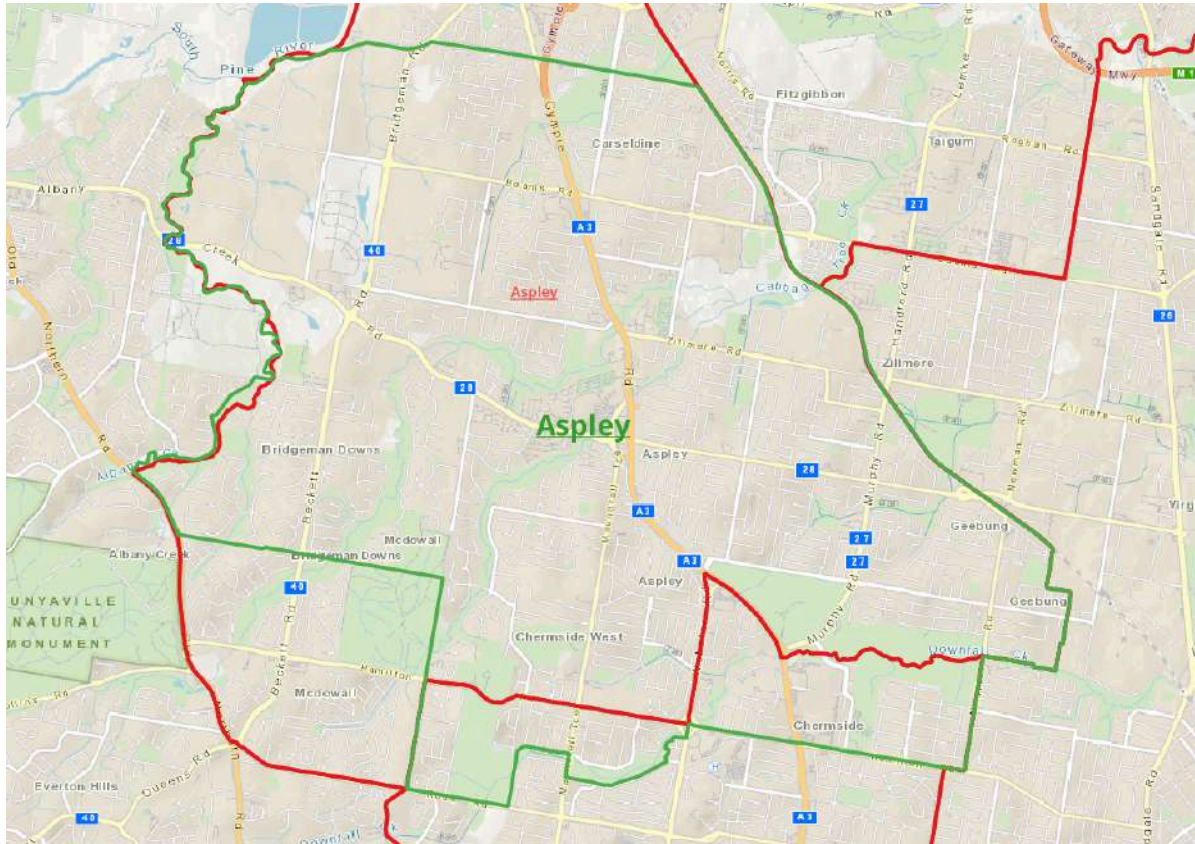
While this might make some boundaries look unusual, this replicates the approach the Commission previously took with the district of Cooper which prioritised a community of interest along Waterworks Road and Enoggera Creek, creating an unusual “sausage shaped” electorate.

Algerster



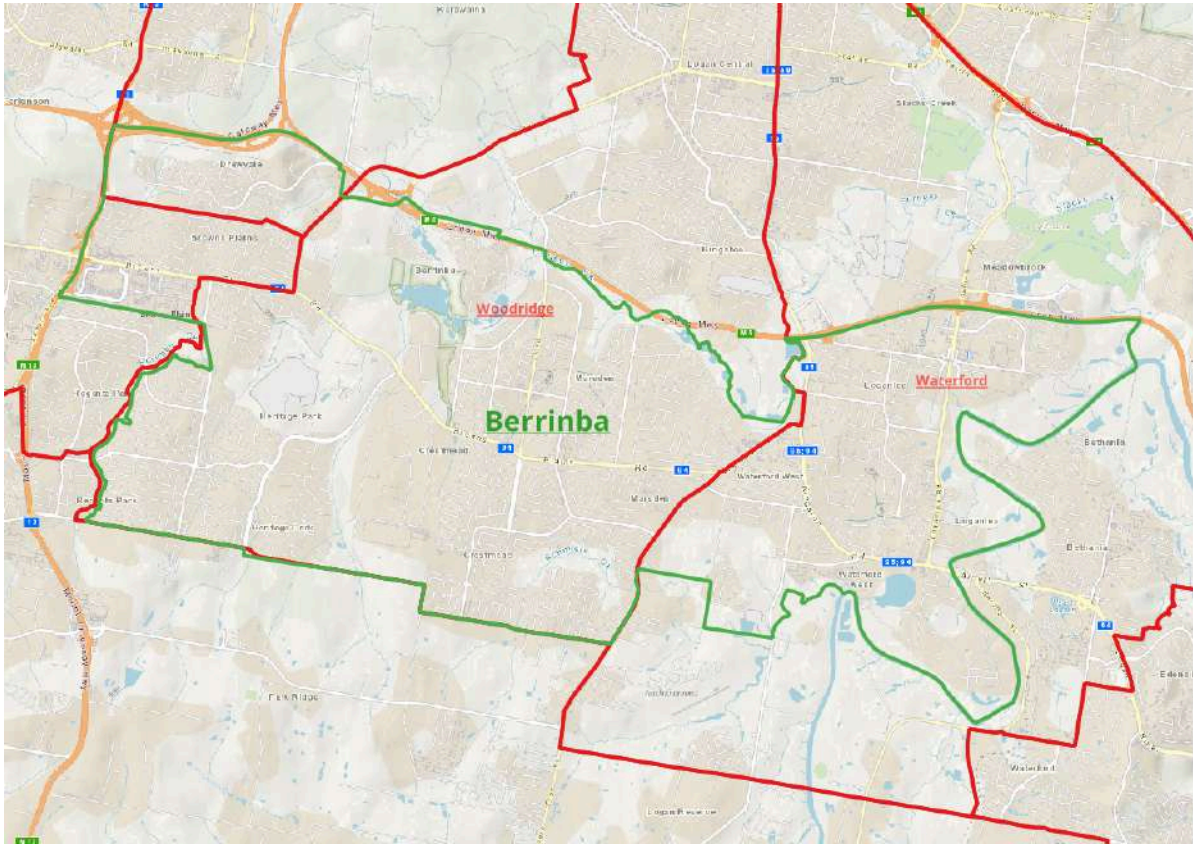
Boundaries	2025 population	2032 projections
Current	41,078 (+2.02%)	43,763 (-2.05%)
Proposed	41,503 (+3.08%)	43,907 (-1.77%)
Loses	Forestdale, Hillcrest, parts of Heathwood and Larapinta south of Logan Motorway, and parts of Regents Park west of Scrubby Creek to Jimboomba .	
Gains	Rocklea west of the train line from Miller and Toohey . The remainder of Calamvale, parts of Drewvale north of the Logan Motorway and parts of Stretton south of Compton Road from Stretton .	
Rationale	While an awkward shape, the majority of residents in this electorate reside in the lower half and our proposal unites the communities of interest bounded by the hard geographic borders of Karawatha Forest and the Logan Motorway. Historic patterns of industrial uses and significant ecological development in the form of the Oxley Creek Rejuvenation Plan also connect Rocklea in the north with Willawong and Larapinta in the south.	

Aspley



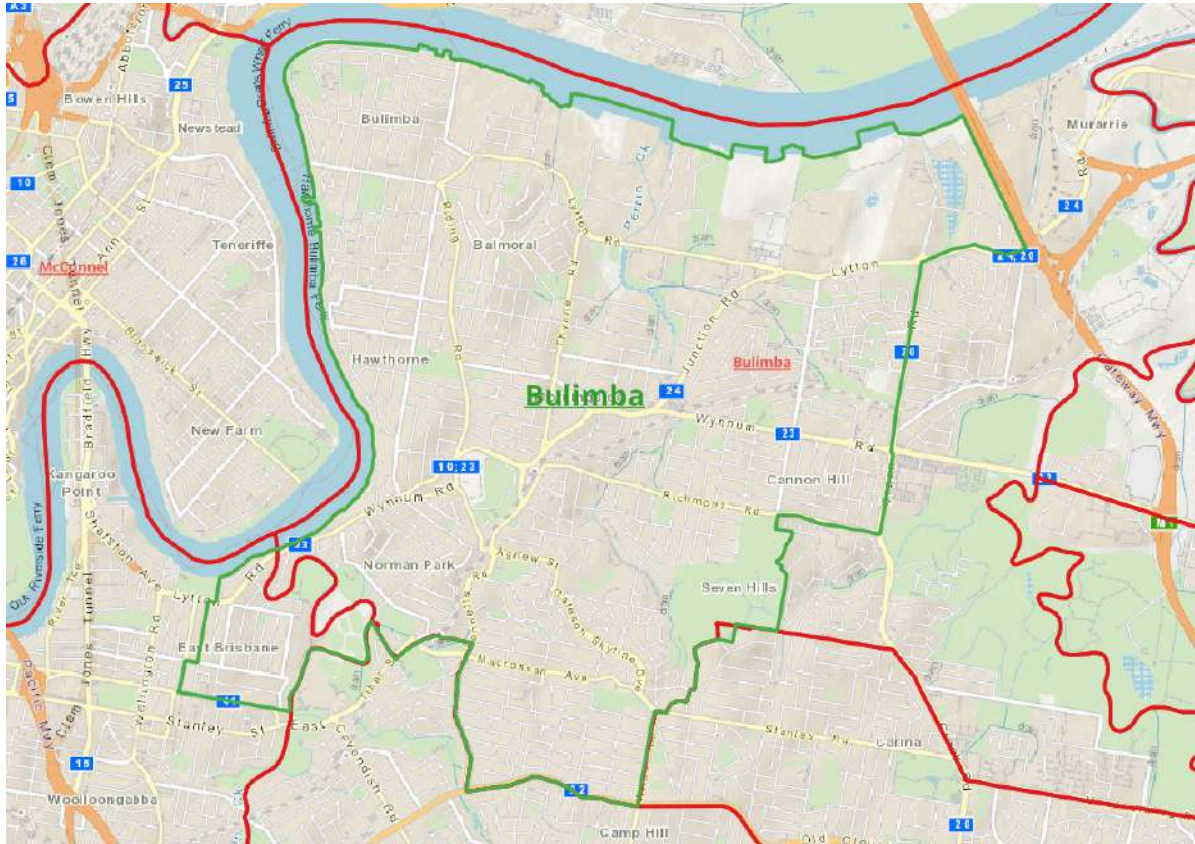
Boundaries	2025 population	2032 projections
Current	40,716 (+1.12%)	42,017 (-5.96%)
Proposed	41,503 (+3.08%)	43,907 (-1.77%)
Loses	Bald Hills, north of Roghan Road to Sandgate . McDowall, west of Trouts Road and south of Saturn Crescent to Bunyaville .	
Gains	Stafford Heights, north of Downfall Creek from Stafford . Chermiside, north of Hamilton Road from Stafford .	
Rationale	Significant growth in Brisbane's inner north demand districts shrink towards the CBD. Slower growth in northern suburbs also demand the expansion of outer ring electorates such as Sandgate. As a consequence of our proposed realignment of Everton south of the Bunyaville Conservation Park and reflecting the historic Hills District, our proposed new Aspley boundaries recentre Aspley activity centre in the middle of the district. This better reflects natural and constructed boundaries, such as Albany Creek and the rail line that surround the suburbs with a shared interest and community amenities.	

Berrinba (formerly known as Waterford)



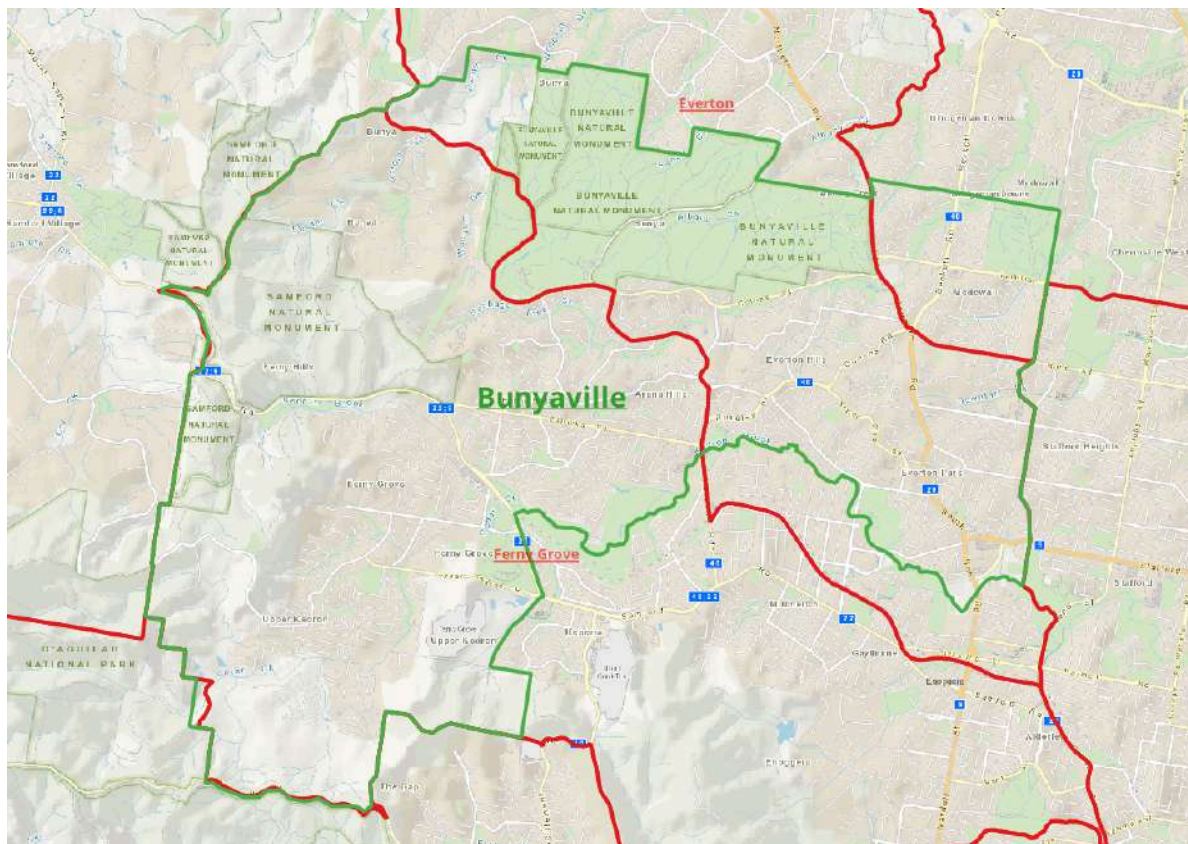
Boundaries	2025 population	2032 projections
Current	40,494 (+0.57%)	45,114 (+0.98%)
Proposed	40,954 (+1.71%)	43,450 (-2.79%)
Loses	Underwood, Logan City, Meadowbrook, Kingston and Tanah Merah, north of the Logan motorway to Woodridge . Bethania, Loganholme, and Waterford, east of the Logan River to Dugulumba . Logan Reserve, south of Schmidts Creek to Logan Village .	
Gains	Marsden, Crestmead, and Heritage Park, north of Green Road and Bumstead Road, from Woodridge . Drewvale, south of the Logan Motorway, from Algester and Stretton .	
Rationale	Waterford is an odd shape because it is following local government boundaries that separate Underwood from Eight Mile Plains along Millers Road, despite sharing a clear community of interest and geographic proximity. Underwood is 20km from Bethania, sharing no community of interest but following the Pacific Motorway. The current electorate is broken up by hard boundaries, including the Logan River and Motorway. Reorienting to be an east-west axis district, ignoring local government boundaries, unites communities with a common interest along the Browns Plains Road corridor.	

Bulimba



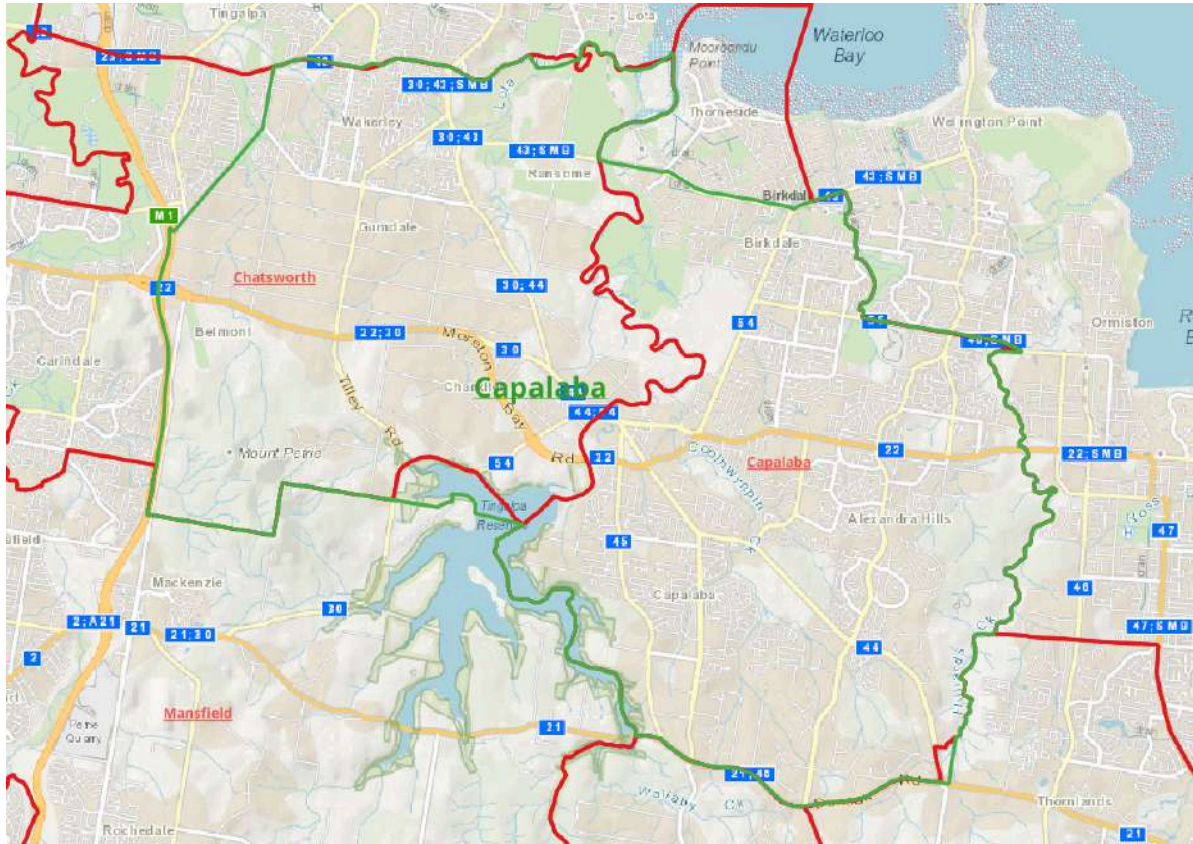
Boundaries	2025 population	2032 projections
Current	42,075 (+5.17%)	43,846 (-1.86%)
Proposed	37,568 (-6.70%)	38,784 (-13.23%)
Loses	Carina and Murrarie, east of Creek Road and Seven Hills Reserve to Carindale . Murrarie, east of the Gateway Motorway to Lytton	
.Gains	East Brisbane, East of Latrobe Street and north of Vulture Street East from South Brisbane .	
Rationale	The growth of the Inner city suburbs necessitates the shrinking of South Brisbane. Gaining the suburb of East Brisbane unites the community of common interest along the Brisbane River and the Lytton and Wynnum Road corridor. This unites a community of interest which shares similar demographics, transport routes, community facilities along Norman Creek and the educational facilities at the Anglican Church Grammar School, with a higher proportion of households having children attending the school. East Brisbane is currently separated from the remainder of South Brisbane by the major roads of Latrobe St and Vulture St East.	

Bunyaville (formerly known as Everton)



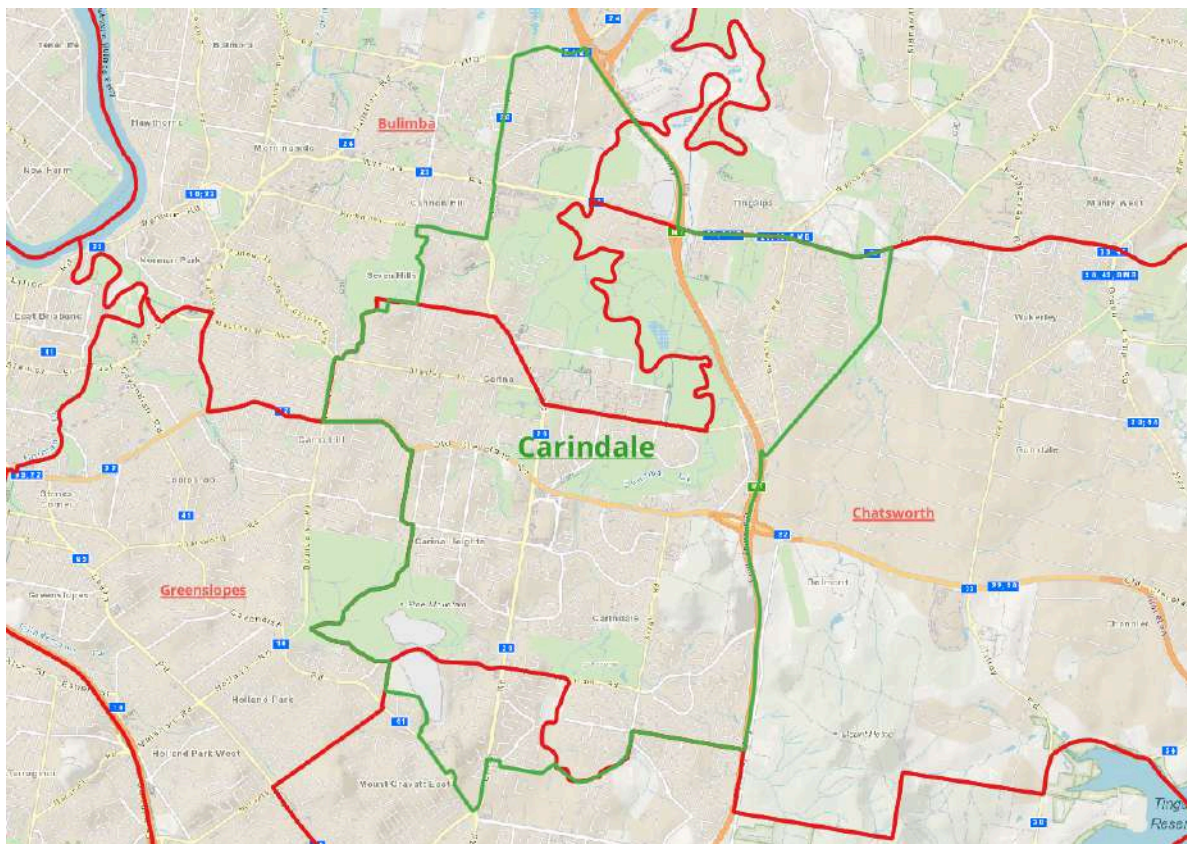
Boundaries	2025 population	2032 projections
Current	40,426 (+0.40%)	42,644 (-4.55%)
Proposed	39,762 (-1.25%)	41,189 (-7.85%)
Loses	Eatons Hill and Albany Creek, north of the Bunya Mountains to the greater Moreton City region redistribution.	
Gains	Upper Kedron, Ferny Grove, Ferny Hills and Arana Hills, from Enoggera . McDowall, east of Old Northern Road from Aspley .	
Rationale	<p>The existing district of Everton is split in half by the impermeable Bunyaville Conservation Park, with residents in the southern half of the district sharing no communities of interest or common demographic characteristics with those in the north. By reorienting the district east-west rather than north-south, we can unite the historic Hills District that share a strong community of interest and cross-traffic and bound the district with hard geographic borders in the form of Bunyaville and Samford reserves in the north, D'Aguilar Ranges in the west and Kedron Brook in the south. Trouts Road and its adjacent linear reserve that runs from Kedron Brook to Spider Hill forms the eastern boundary.</p>	

Capalaba



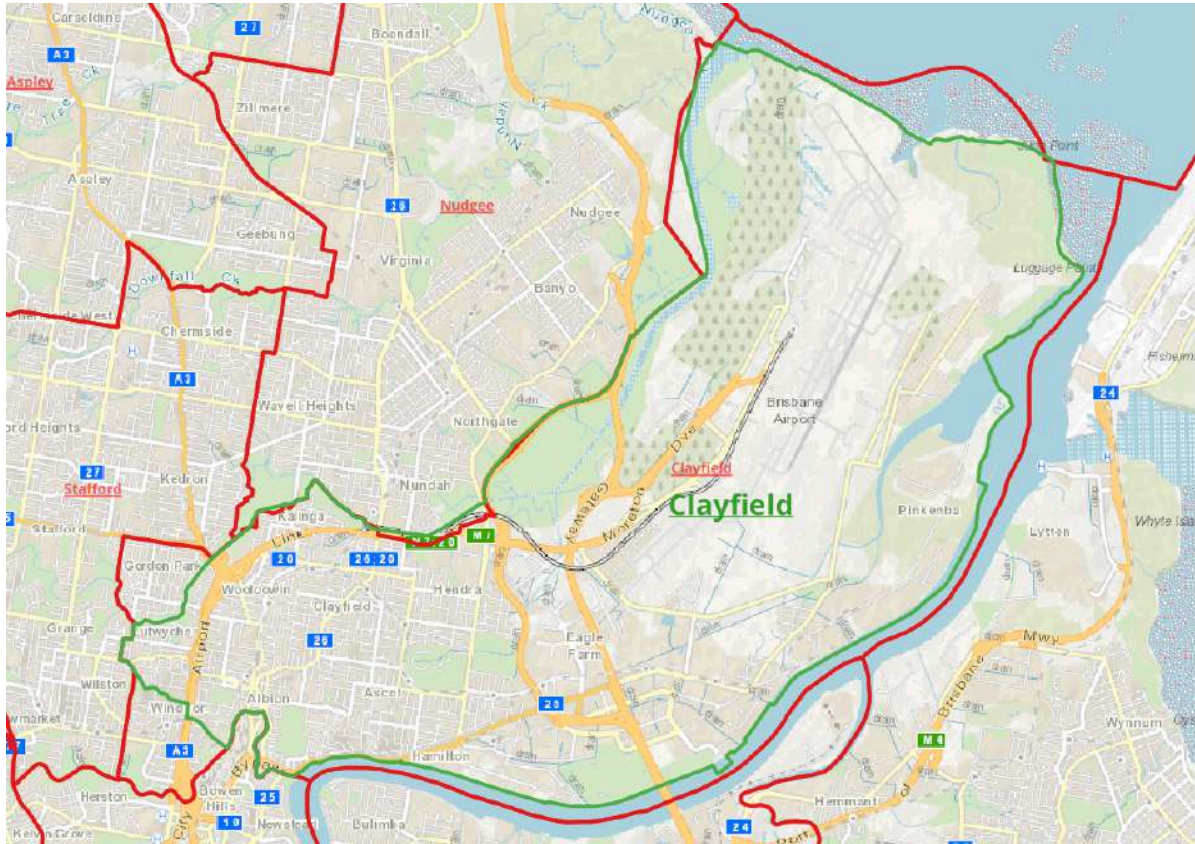
Boundaries	2025 population	2032 projections
Current	37,988 (-5.65%)	38,211 (-14.48%)
Proposed	43,867 (+8.95%)	44,082 (-1.38%)
Loses	Thorneside, north of Rickertt Road to Oodgeroo .	
Gains	Ransome, Gumdale, Chandler, Wakerley, east of the Gateway motorway and Dairy Swamp Road from Carindale .	
Rationale	<p>Thorneside shares a clear common interest with the other coastal bay communities of Birkdale and Wellington Point, and should be united. The current district of Chatsworth is a very odd shape because it follows local government boundaries and fills the gap between Brisbane City and the Redlands. It joins the denser inner suburban areas of Carina and Carindale with more semi-rural areas of Chandler, Gumdale and Ransome, despite these areas sharing no community of interest, geographic proximity, and are separated by the natural boundary of the Pacific Motorway. Wakerley, Ransome, Gumdale, and Chandler, are a clear community of interest, with common educational facilities, commercial and community facilities. These communities have a natural connection with Capalaba along the Old Cleveland Road corridor to the major commercial hub in the area.</p>	

Carindale (formerly known as Chatsworth)



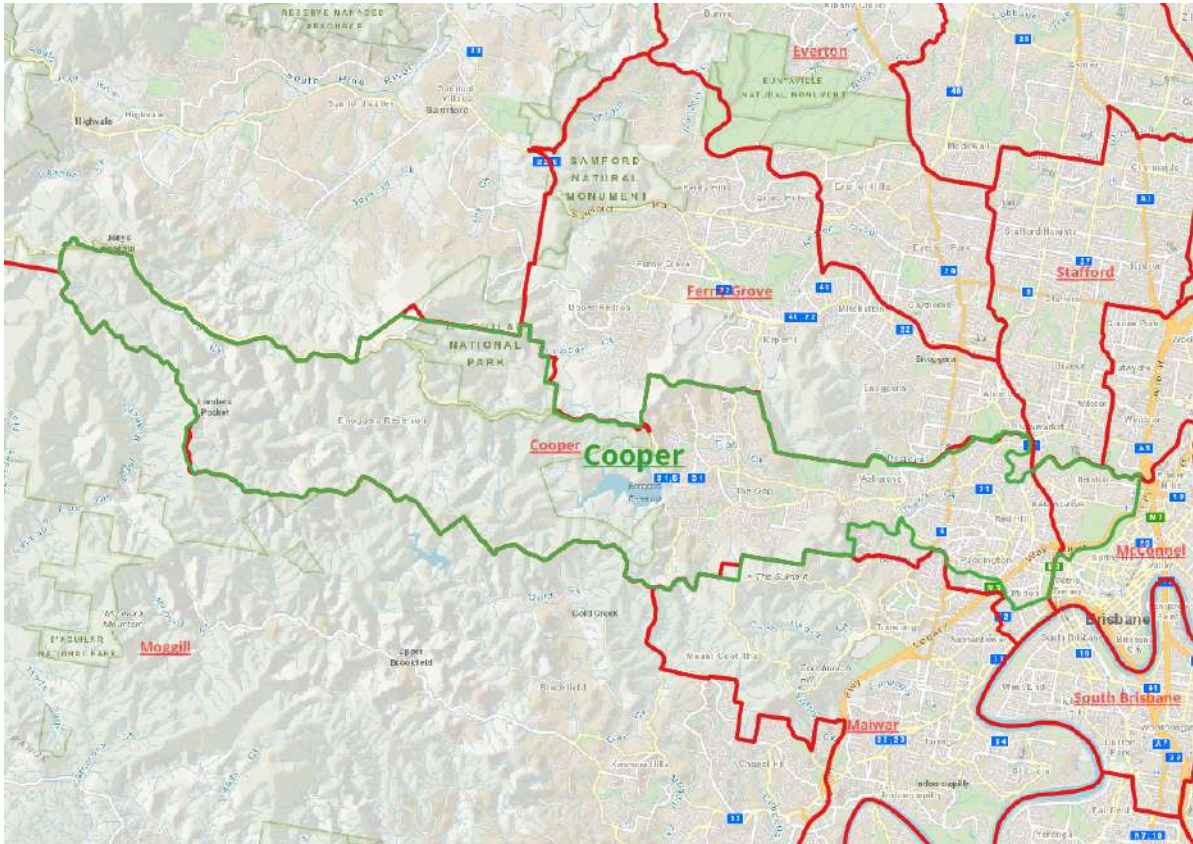
Boundaries	2025 population	2032 projections
Current	37,203 (-7.60%)	37,468 (-16.14%)
Proposed	37,312 (-7.33%)	37,884 (-15.24%)
Loses	Wakerly, Gumdale, Ransome, and Chandler, east of the Pacific motorway and Dairy Swamp Road to Capalaba .	
Gains	Carina, east of Seven Hills Reserve and Murrarie, east of Creek Road from Bulimba . Carindale and Mansfield, north of Cavendish Road and Bulimba Creek from Mansfield .	
Rationale	The reorientation of the electorate along the Creek Road corridor, unites formerly divided Carina communities which have a clear connection along Creek Road and share facilities, including commercial centres, community infrastructure, including the Carindale public transport hub, Clem Jones Centre sporting facilities and schools along the corridor.	

Clayfield



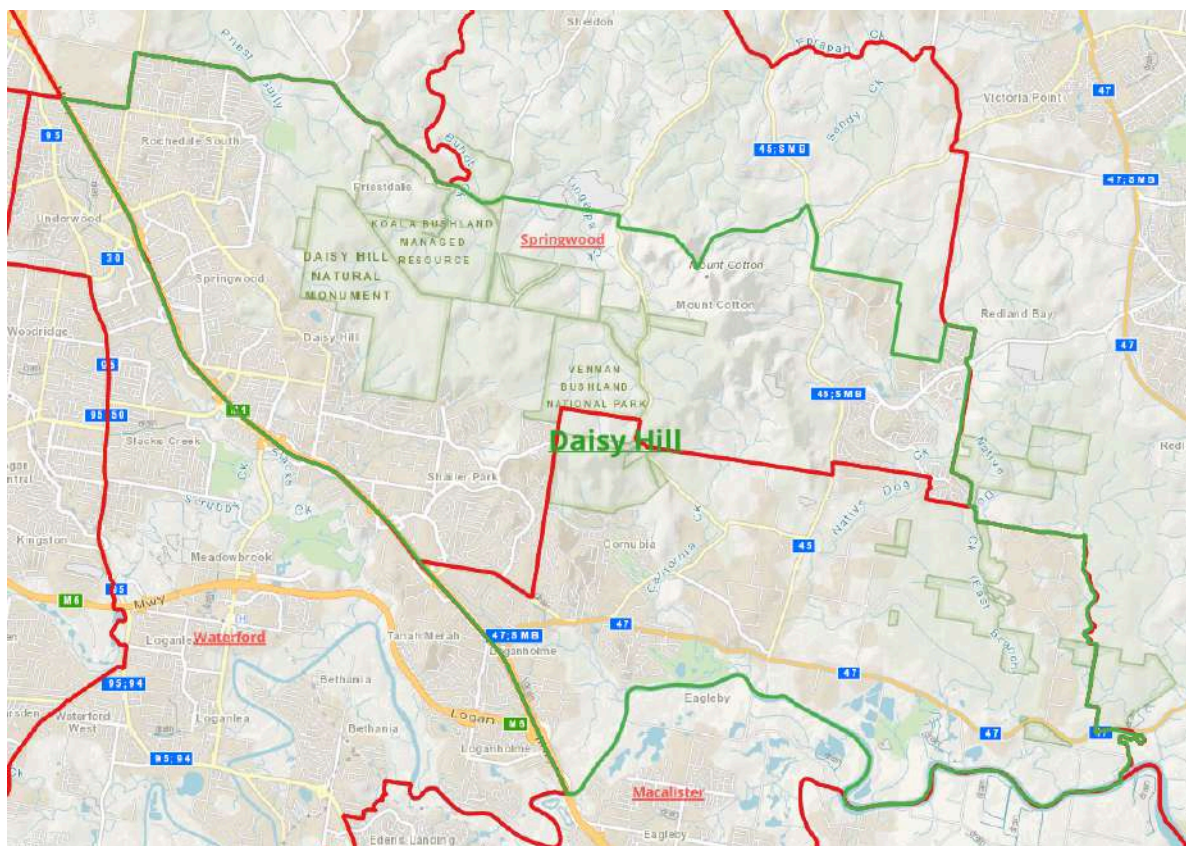
Boundaries	2025 population	2032 projections
Current	43,069 (+6.97%)	48,711 (+9.03%)
Proposed	36,837 (-8.51%)	42,120 (-5.77%)
Loses	Gordon Park, north of Kedron Brook, to Stafford . Windsor, south of Constitution Road east of Lutwyche Road and south of the train line west of Lutwyche Road, to Ferny Grove .	
Gains	Nil	
Rationale	Gordon Park being north of Kedron Brook has a more natural community of interest with Stafford district, with Stafford Shopping Centre being their local activity centre. Windsor was moved to reflect two shared communities of interest with Ferny Grove – the Ferny Grove Train Line and shared experiences with flooding along Enoggera Creek.	

Cooper



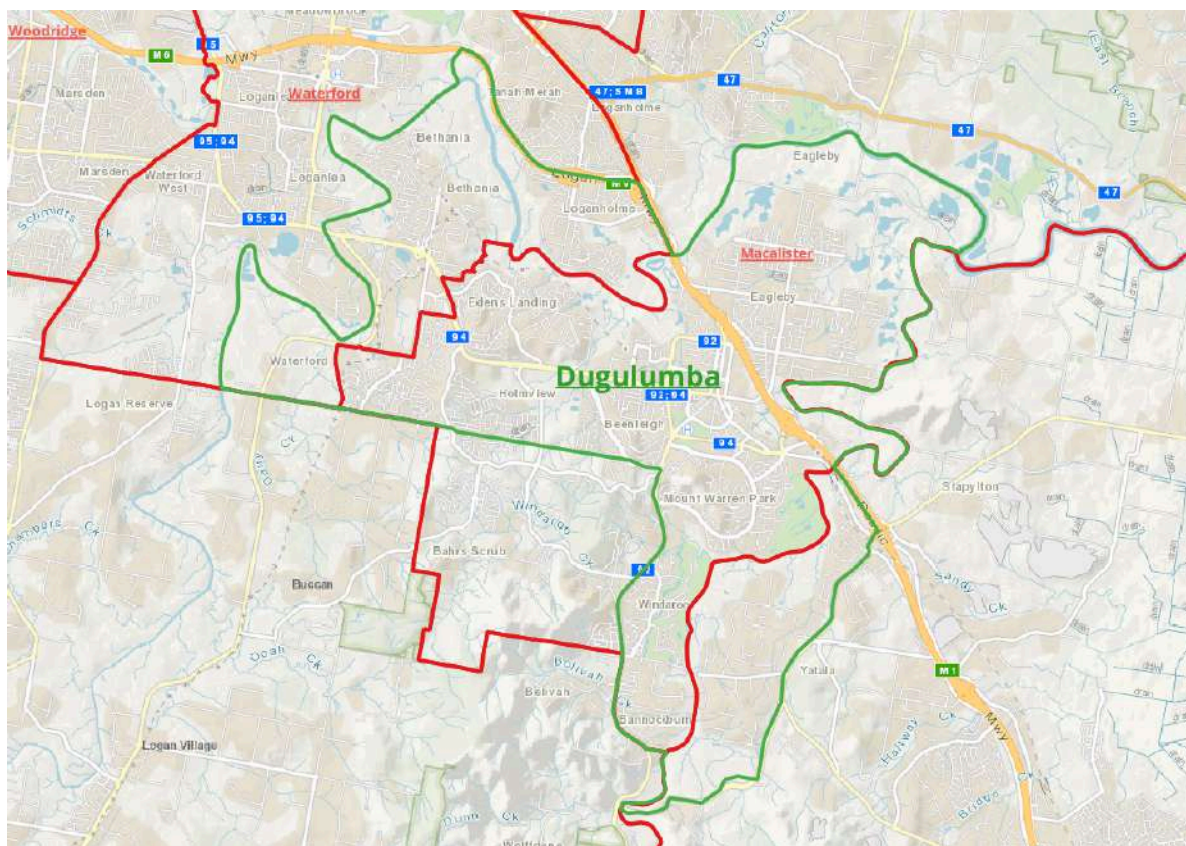
Boundaries	2025 population	2032 projections
Current	38,869 (-3.47%)	40,957 (-8.33%)
Proposed	38,985 (-3.18%)	40,972 (-8.33%)
Losses	Parts of Bardon, south of Bushland Park, Sunrise Street, and Northam Avenue; Rosalie south of Fernberg Road; and Milton south of Baroona Road and Milton Road to Maiwar .	
Gains	Kelvin Grove and Herston east of Bowen Ridge Road from McConnel .	
Rationale	Kelvin Grove and Herston are naturally bounded by Enoggera Creek and the inner city rail trunk and share natural connections to Cooper across Kelvin Grove Road. The parts of Bardon we're proposing to shift to Maiwar are totally inaccessible from Cooper except by going through Maiwar. Likewise, we're reuniting the split suburbs of Milton and Rosalie who also share a common community of interest over repeated experiences with river flooding. Moving Herston into Cooper aligns that boundary with the Paddington Ward boundary and reflects a more common community of interest between Red Hill and Kelvin Grove instead of splitting that community over the hard boundaries of the Inner City Bypass and Barrambin Victoria Park.	

Daisy Hill (formerly known as Springwood)



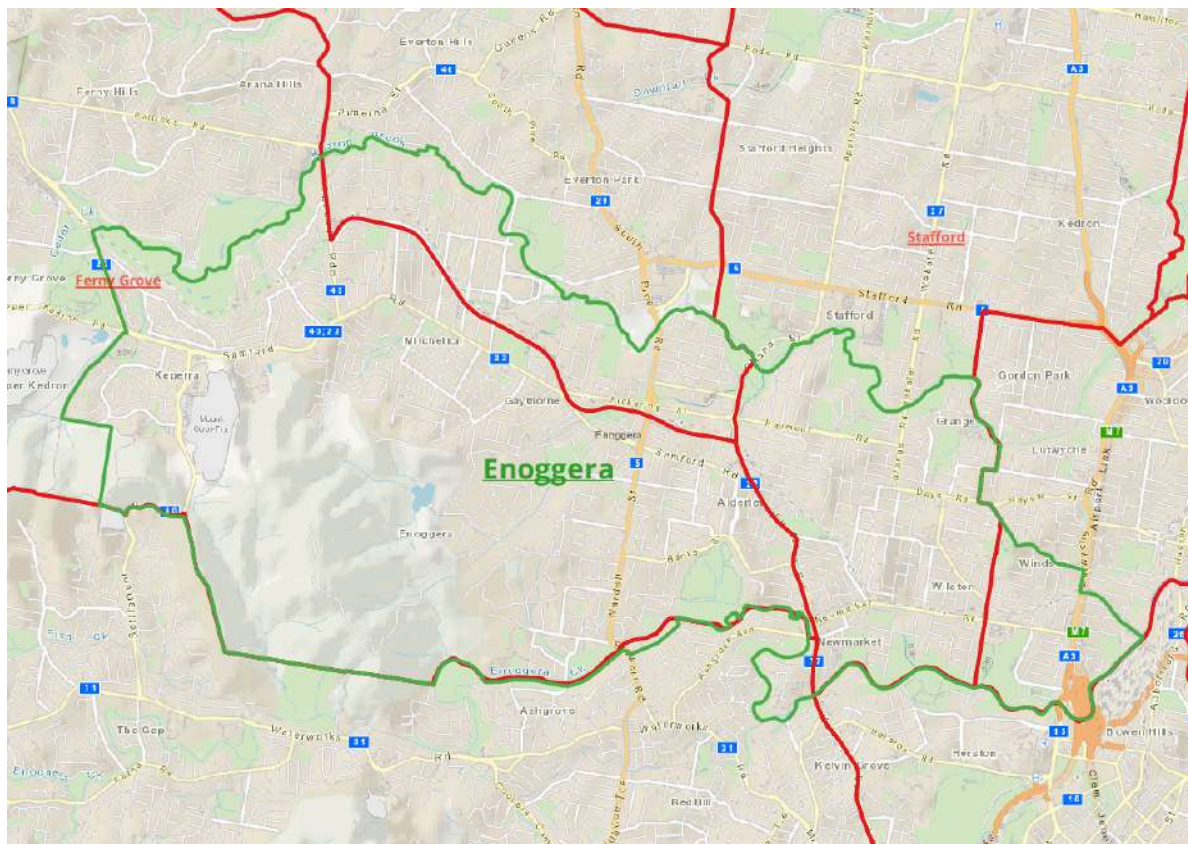
Boundaries	2025 population	2032 projections
Current	37,187 (-7.64%)	37,628 (-15.78%)
Proposed	43,477 (+7.98%)	44,160 (-1.20%)
Losses	Rural parts of Mount Cotton return to Redlands .	
Gains	Cornubla and Carbrook, north of Logan River from Dugulumba .	
Rationale	The current boundaries of Springwood contain parts of Mount Cotton with limited physical connections to the rest of the electorate. Cornubla and Carbrook are physically disconnected from the rest of Macalister by the Pacific Motorway and the Logan River. Uniting these with the closest interconnected communities, of Mount Cotton and Shailer Park, and the rest of Daisy Hill, which share community infrastructure, ensures their common interests are represented.	

Dugulumba (formerly known as Macalister)



Boundaries	2025 population	2032 projections
Current	42,889 (+6.52%)	47,573 (+6.48%)
Proposed	39,809 (-1.13%)	41,481 (-7.20%)
Loses	Cornubla and Carbrook, north of Logan River to Daisy Hill . Bahrs Scrub, south of Tallagandra Road to Logan Village .	
Gains	Bethania, Loganholme, and Waterford, east of the Logan River from Waterford . Yatala, east of Stanmore Road from Coomera . Loganholme, south of the Logan Motorway, from Waterford .	
Rationale	The current boundaries of Macalister do not respect the natural boundaries of the Logan River. By making the river the northern boundary, it ensures communities remain connected as much as possible. Eagleby lacks any physical connections over the river.	

Enoggera (formerly known as Ferny Grove)



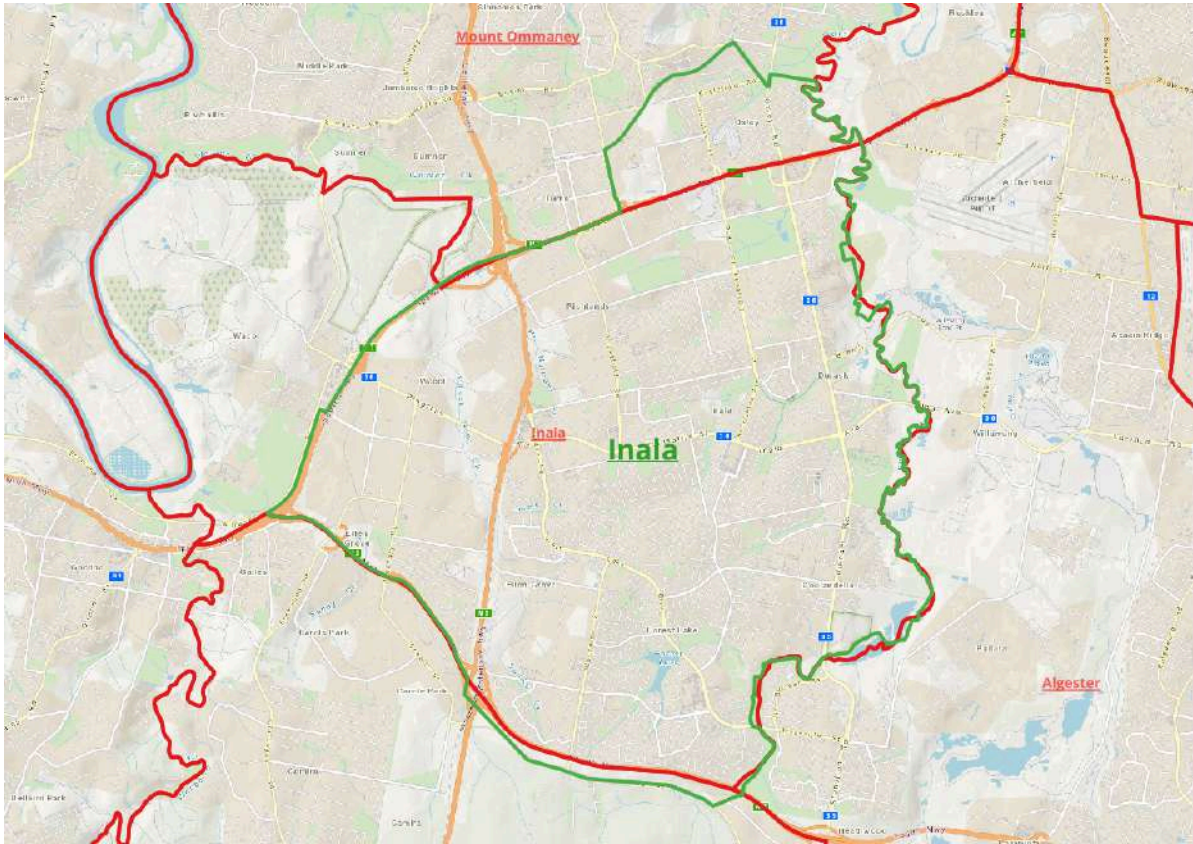
Boundaries	2025 population	2032 projections
Current	38,463 (-4.47%)	39,651 (-11.25%)
Proposed	38,379 (-4.68%)	40,271 (-9.90%)
Loses	Upper Kedron, Ferny Grove, and Arana Hills, north of Kedron Brook and west of Samford Road to Bunyaville .	
Gains	Remainder of Keperra, Gaythorne, and Enoggera, south of Kedron Brook from Bunyaville . Remainder of Alderly, south of Kedron Brook from Stafford . Windsor, south of Constitution Road and Ferny Grove Rail line from Clayfield .	
Rationale	The communities between Kedron Brook and Enoggera Creek are currently divided across multiple electorates, despite being physically connected along the major transport link of the Ferny Grove Rail line and Samford Road and separated from the rest of their current electorates by these waterways. Enoggera is a major activity centre for the district, particularly oriented around the Gallipoli Barracks. These boundaries better reflect local primary catchment areas, demographics and the way people live within the region.	

Greenslopes



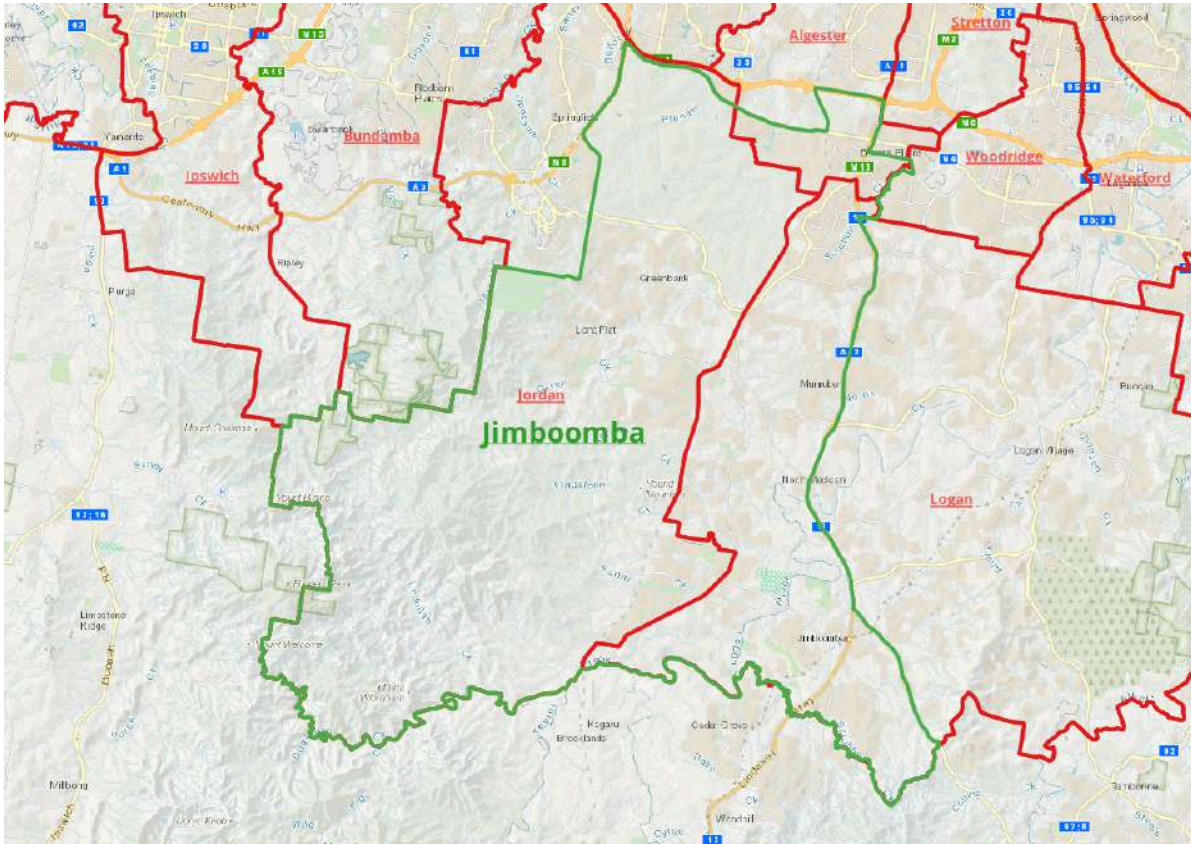
Boundaries	2025 population	2032 projections
Current	39,023 (-3.08%)	42,830 (-4.14%)
Proposed	39,023 (-3.08%)	42,832 (-4.71%)
Losses	Nil	
Gains	The remainder of Stones Corner east of the Pacific Motorway, from South Brisbane .	
Rationale	Limited changes are required. The small section of houses east of the motorway are disconnected from the rest of South Brisbane and are more associated with the Stones Corner activity centre.	

Inala



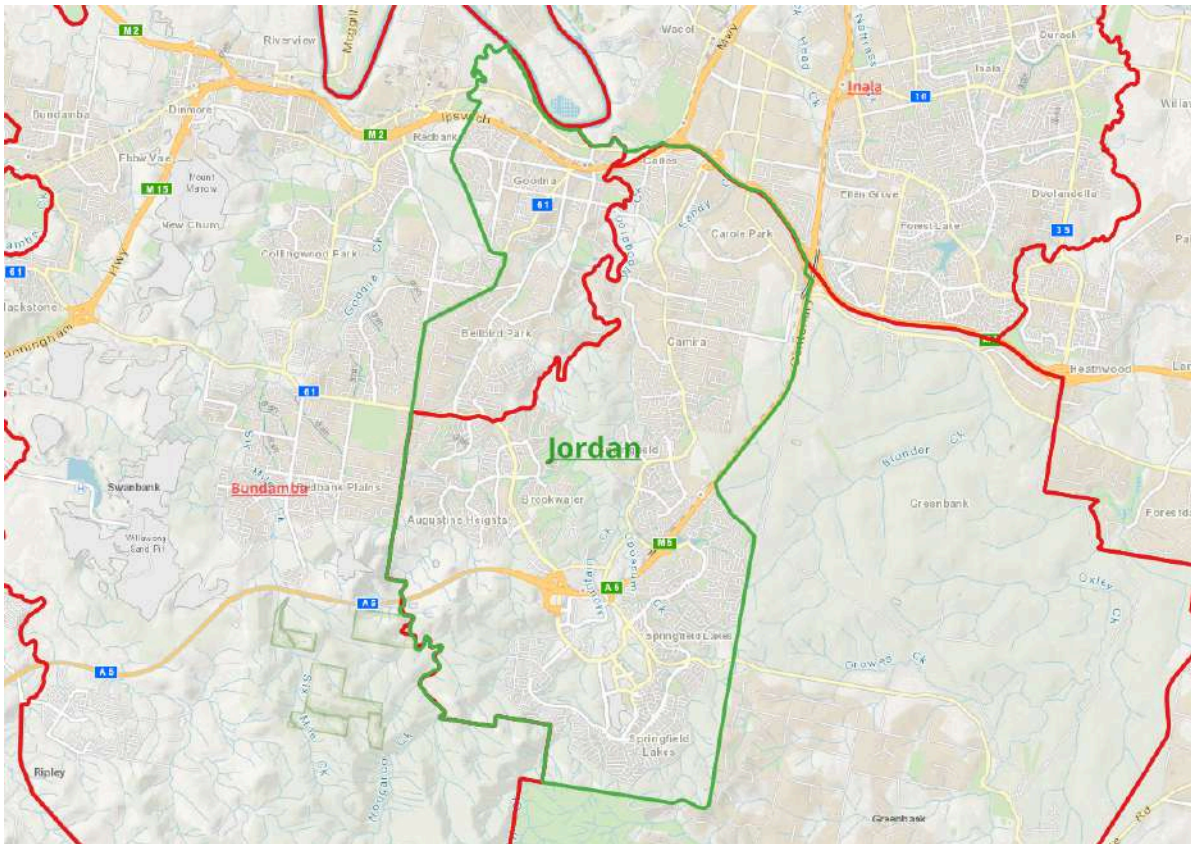
Boundaries	2025 population	2032 projections
Current	39,709 (-1.38%)	41,266 (-7.64%)
Proposed	42,539 (+5.65%)	44,393 (-0.68%)
Losses	Parts of Wacol west of Ipswich Road to Mt Ommaney .	
Gains	Parts of Oxley south of Haughton Park linear reserve and the train line from Mt Ommaney .	
Rationale	The southern parts of Oxley south of the linear reserve share a stronger community of interest with Inala through the Blunder Road commercial precinct. The northern parts retain a stronger connection to the historic Oxley Road communities.	

Jimboomba (new seat)



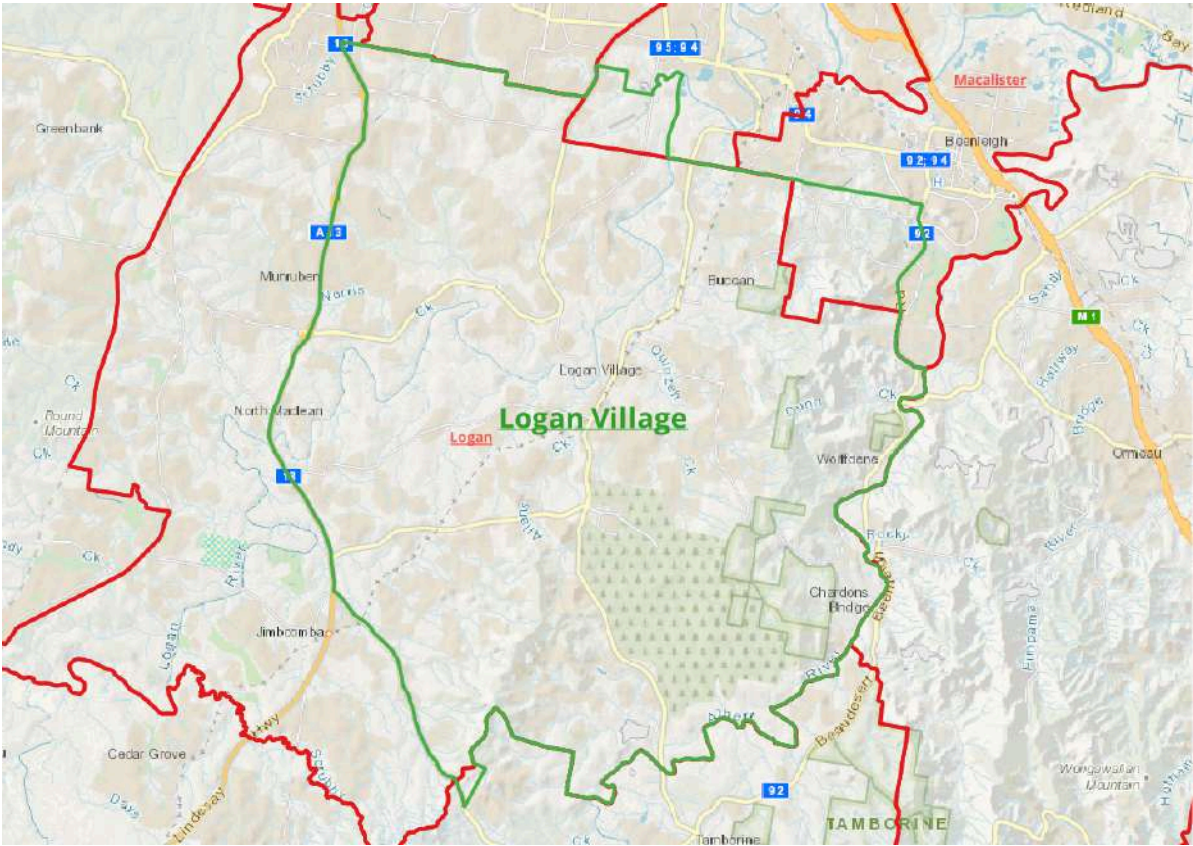
Boundaries	2025 population	2032 projections
Current	N/A	N/A
Proposed	43,918 (+9.08%)	58,911 (+31.80%)
Losses	Nil.	
Gains	Forest Dale, Hillcrest, south of the Logan Motorway from Algeester . Greenbank, Silverbark Ridge, Flagstone, Lyons, Monarch Glen and Flinders Lakes from Jordan . North Maclean, South Maclean, Boronia Heights, Jimboomba and Riverbend, west of the Mount Lindsay Highway and Mundoolun Road from Logan Village .	
Rationale	This region is currently experiencing significant growth and is projected to grow substantially more. As current activity centres are dispersed, it is important that the new electorate include strong existing community centres to help establish shared community interests. It is expected that this electorate will not reach the projected enrollment as calculated from the population estimates provided by the commission, and over-correcting at this redistribution may result in unequal representation in the future and will be to the detriment of other voters in the area.	

Jordan



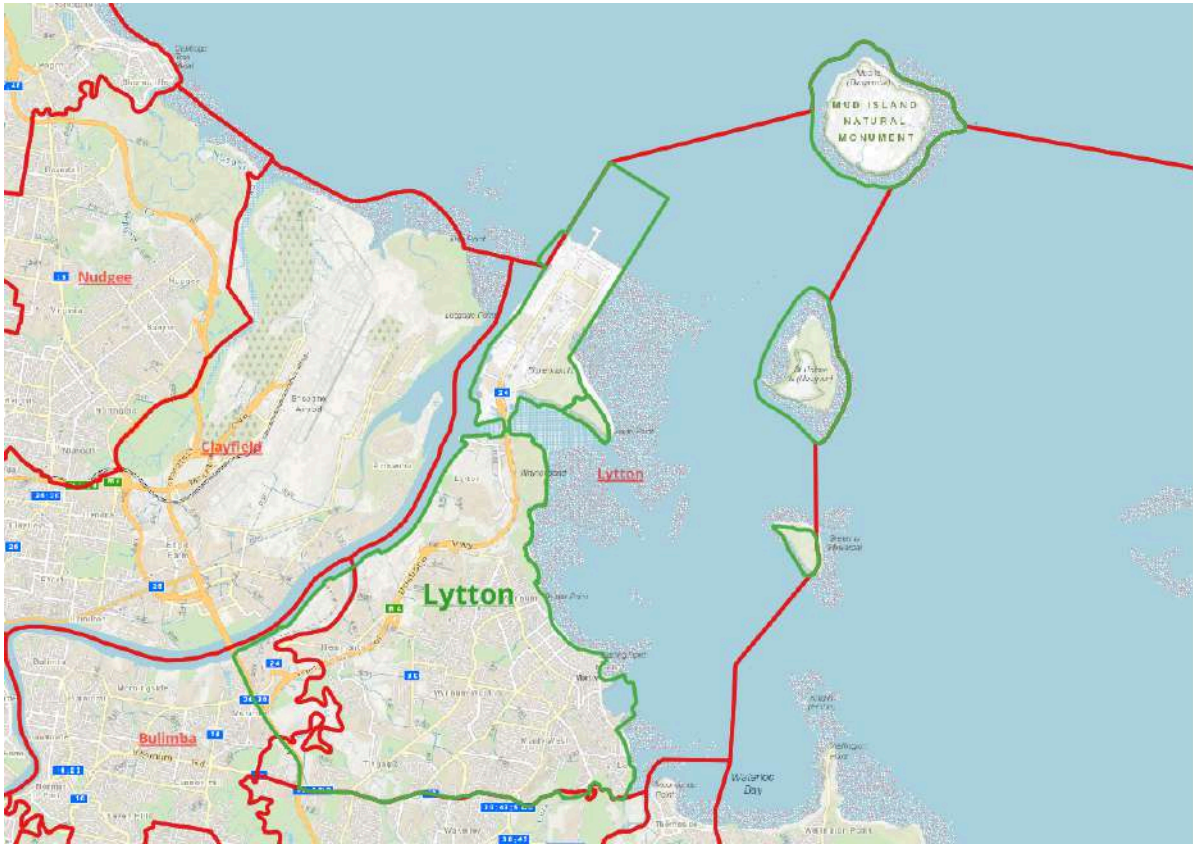
Boundaries	2025 population	2032 projections
Current	48,596 (+20.69%)	65,794 (+47.26%)
Proposed	44,044 (+9.39%)	54,572 (+22.09%)
Losses	Greenbank, Silverbark Ridge, Flagstone, Lyons, Monarch Glen and Flinders Lakes, to Jimboomba .	
Gains	Bellbird Park and Goodna, east of Goodna Creek and Redbank Plains Road, from Ripley .	
Rationale	<p>The current Jordan boundaries encompass multiple regions despite these areas sharing no community of interest, have little to no geographic proximity, and are separated by the natural boundary Spring Mountain and are only connected via the Springfield Greenbank Arterial. The return of Jordan to a largely Ipswich region electorate better represents communities with a common interest in the area and are connected along the major interconnecting transport routes of Jones Road, Ipswich Road, and the Ipswich Rail line. It is expected that this electorate will not reach the projected enrollment as calculated from the population estimates provided by the commission, and over-correcting at this redistribution may result in unequal representation in the future and will be to the detriment of other voters in the area.</p>	

Logan Village (formerly known as Logan)



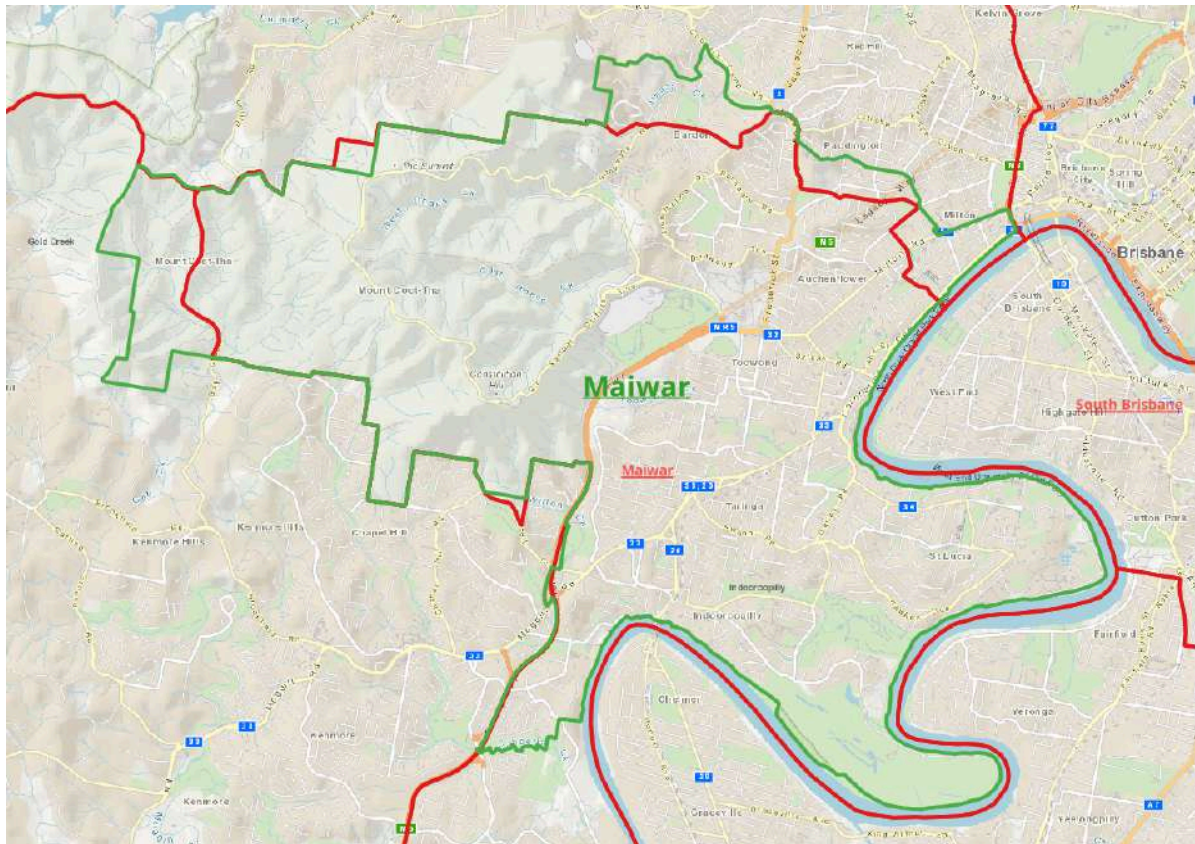
Boundaries	2025 population	2032 projections
Current	51,432 (+27.74%)	67,441 (+50.95%)
Proposed	39,666 (-1.49%)	54,817 (+22.64%)
Loses	North Maclean, South Maclean, Boronia Heights, Jimboomba and Riverbend, west of the Mount Lindesay Highway and Mundoolun Road, to Jimboomba .	
Gains	Bahrs Scrub, south of Tallagandra Road from Dugulumba . Logan Reserve, south of Schmidts Creek from Berrinba .	
Rationale	The creation of Jimboomba and the expected growth in the area necessitated shrinking the electorate. It is expected that this electorate will not reach the projected enrollment as calculated from the population estimates provided by the commission, and over-correcting at this redistribution may result in unequal representation in the future and will be to the detriment of other voters in the area.	

Lytton



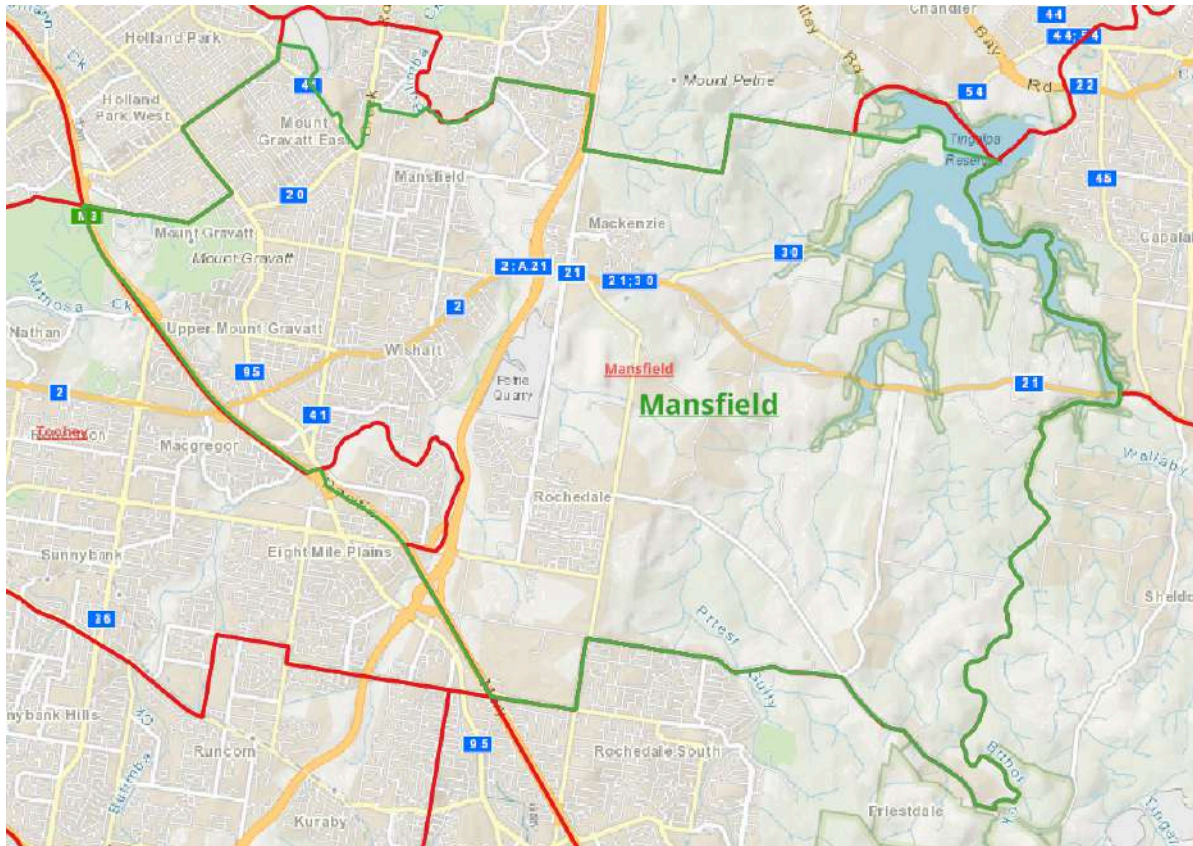
Boundaries	2025 population	2032 projections
Current	40,204 (-0.15%)	42,102 (-5.77%)
Proposed	39,857 (-1.01%)	41,746 (-6.60%)
Loses	Parts of Tingalpa east of the Gateway Motorway to Bulimba .	
Gains	Murrarie, east of the Gateway Motorway from Bulimba .	
Rationale	Our proposal shifts the boundary for these electorates from Bulimba Creek to the Gateway Motorway. The Motorway is a more impermeable barrier and the residents of Tingalpa's western spur share a community of interest with Cannon Hill moreso than the remainder of Tingalpa to the Motorway's east. This unites more of the Lytton Road and Brisbane Port industrial area and prevents a panhandle being created for the Bulimba electorate.	

Maiwar



Boundaries	2025 population	2032 projections
Current	41,016 (+1.87%)	43,950 (-1.63%)
Proposed	41,795 (+3.80%)	45,182 (+1.09%)
Loses	Fig Tree Pocket to Moggill .	
Gains	Parts of Bardon, south of Bushland Park, Sunrise Street, and Northam Avenue, from Cooper . Rosalie south of Fernberg Road from Cooper . Milton, south of Barooka Road and Milton Road from Cooper	
Rationale	Fig Tree Pocket represents a closer community of interest with Kenmore than the current tenuous connection with the rest of the electorate. Parts of Bardon south of Bushland Park are only accessible via Maiwar with no land crossings into their existing district. Maiwar is named after the river and the river-oriented communities north are disconnected. Shared experiences of flooding in Milton and Rosalie are currently split between two districts.	

Mansfield



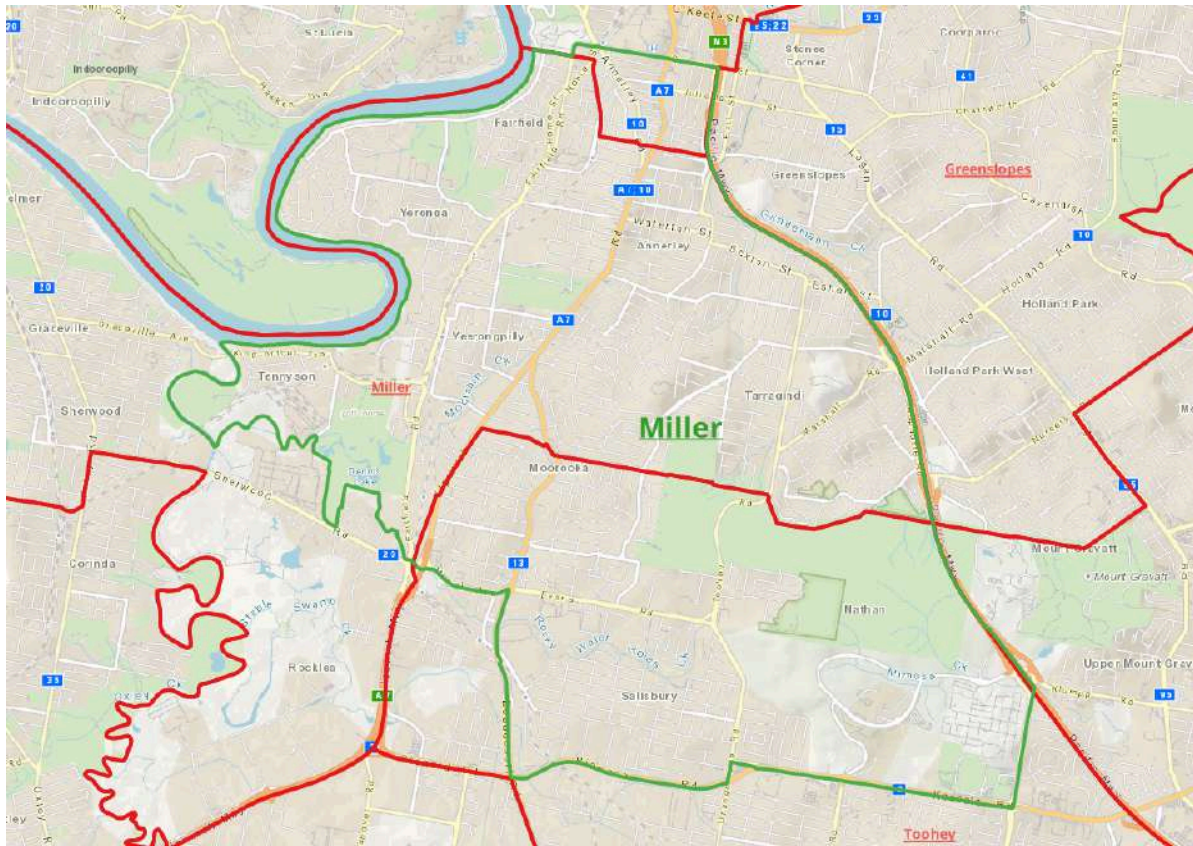
Boundaries	2025 population	2032 projections
Current	36,881 (-8.40%)	41,588 (-6.92%)
Proposed	36,329 (-9.77%)	40,918 (-8.45%)
Loses	Parts of Mount Gravatt East east of Cavendish Road and west of Bulimba Creek to Carindale .	
Gains	Parts of Eight Mile Plains surrounding Holmead Road and south of Bulimba Creek from Sunnybank .	
Rationale	The small region of Eight Miles Plains east of the Pacific Motorway lacks strong physical connections to the west parts of the suburb, and is better connected to Creek Road and the suburbs north.	

McConnel



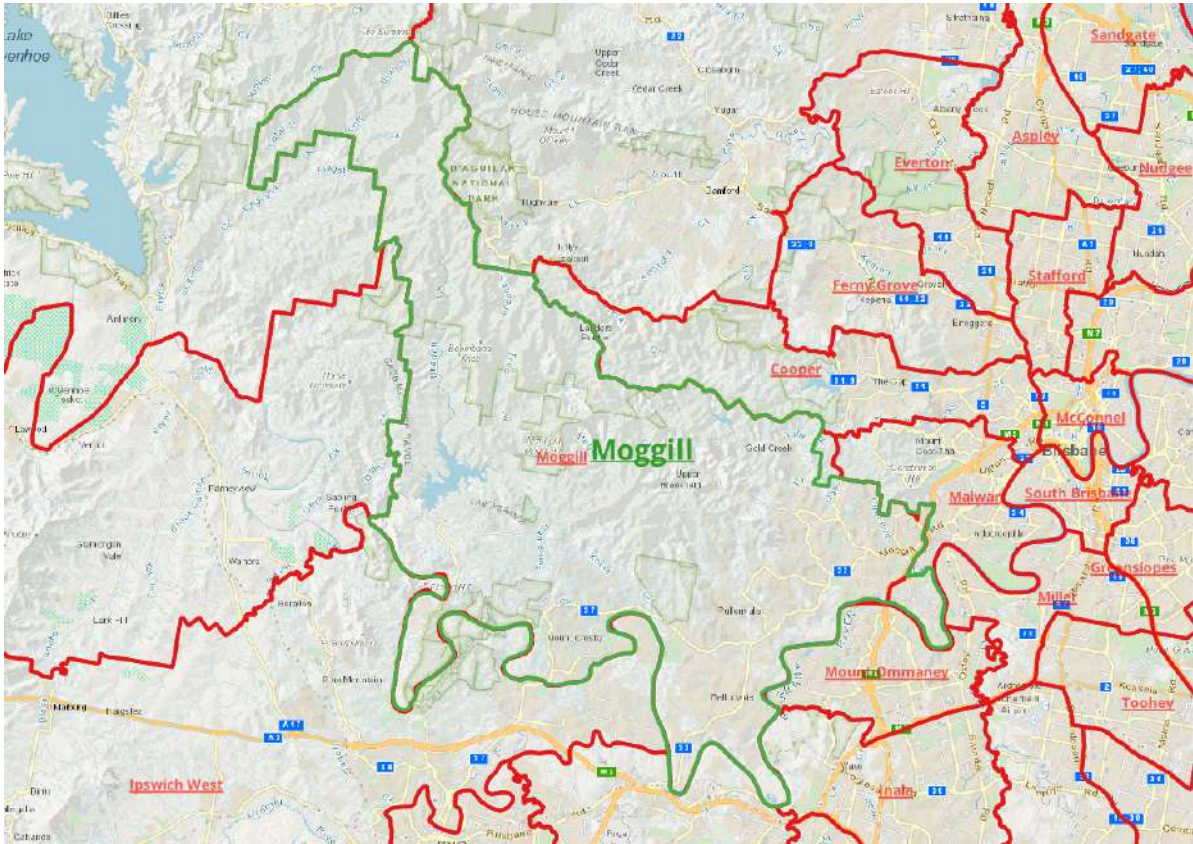
Boundaries	2025 population	2032 projections
Current	42,731 (+6.13%)	53,667 (+20.12%)
Proposed	38,303 (-4.87%)	48,521 (+8.56%)
Losses	Herston and the remainder of Kelvin Grove north of the Inner City Bypass to Cooper .	
Gains	Nil.	
Rationale	The Inner City Bypass, Bowen Hills railyards and Barrambin Victoria Park effectively split McConnel into two separate parts with very little permeability between the sections. Kelvin Grove and Herston's more suburban characteristics are also very different to Brisbane's CBD and high density Fortitude Valley-Newstead corridor. Paddington Ward's boundaries already use these impermeable barriers as boundaries, recognising a closer community of interest between Kelvin Grove and Red Hill.	

Miller



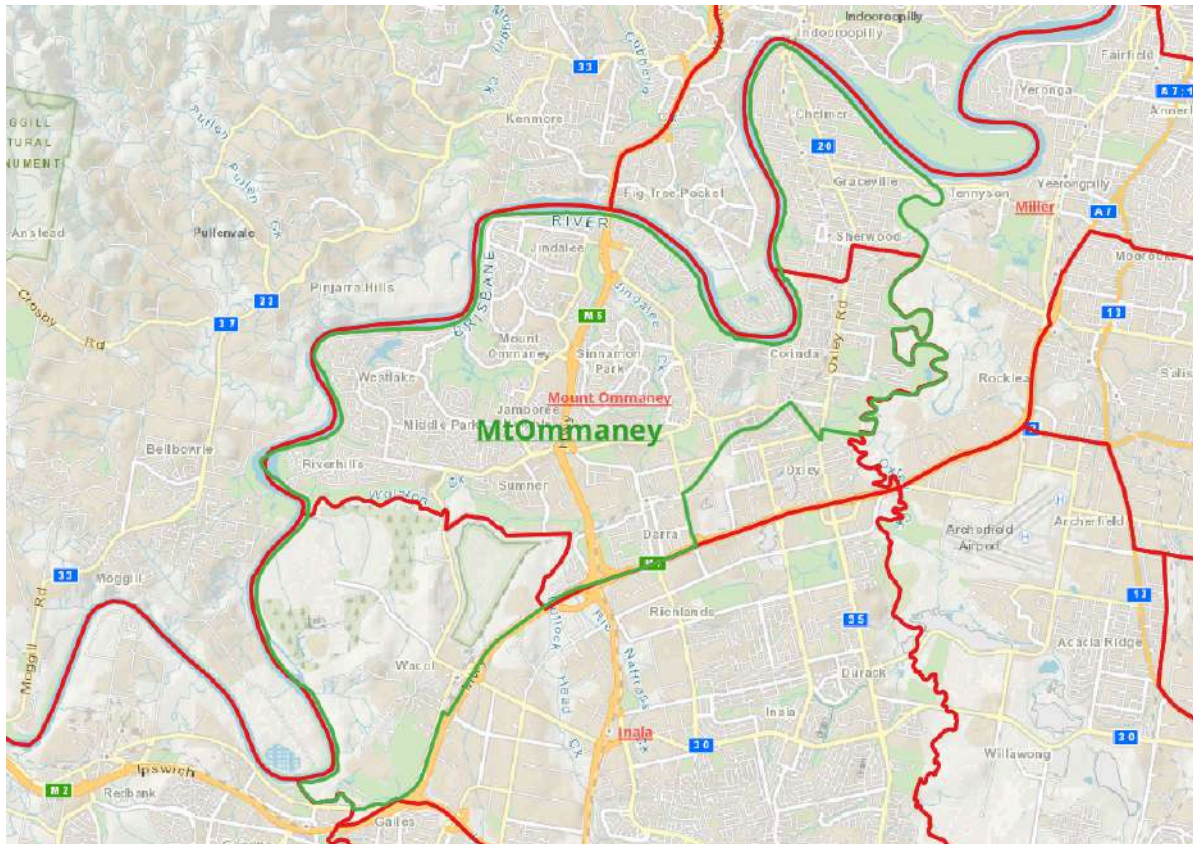
Boundaries	2025 population	2032 projections
Current	36,894 (-8.37%)	38,592 (-13.62%)
Proposed	39,903 (-0.90%)	41,854 (-6.36%)
Loses	Chelmer, Graceville and the remainder of Sherwood east of Oxley Creek to Mount Ommaney . Rocklea west of the train line to Algester .	
Gains	Moorooka, Salisbury and Nathan north of Riawena and Kessels Road from Sunnybank . Annerley south of Cornwall Road from South Brisbane .	
Rationale	<p>Abolishing Stretton and reorienting Toohey around Sunnybank allows the Moorooka community to be united. The new boundaries better reflect Moorooka as the natural community centre with its high street and the strong multicultural character of the area. The new boundaries also better reflect local school catchments. Suburbs east of Oxley Creek were historically connected south along Oxley Road through the historic Sherwood Shire which initiated the settlement patterns of the area. The suburbs along Oxley Road especially maintain a strong shared community of interest and remain largely accessible only internally to each other because of the hard border of Oxley Creek, with only one road connection to the remainder of Miller. The industrial character of Rocklea is also more similar to Algester's Willawong and Larapinta precincts.</p>	

Moggill



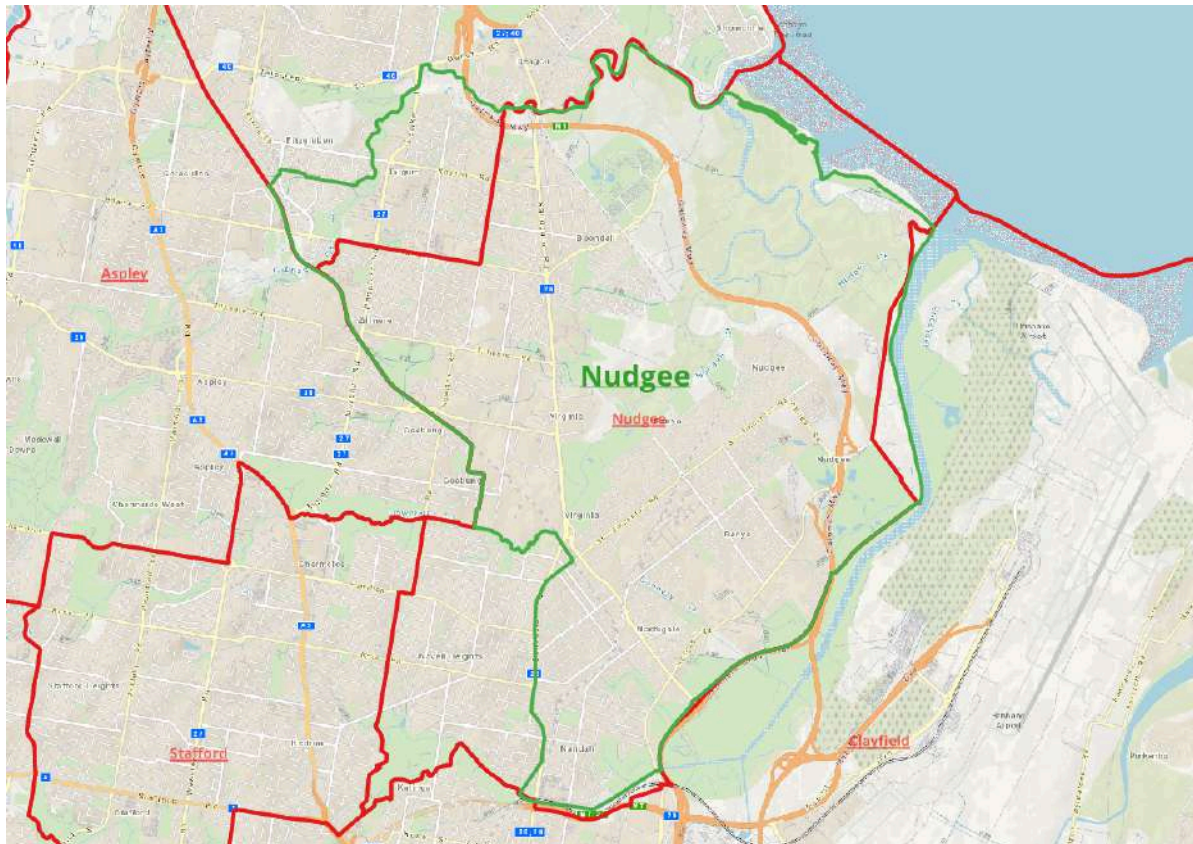
Boundaries	2025 population	2032 projections
Current	36,681 (-8.90%)	37,011 (-17.16%)
Proposed	39,687 (-1.43%)	40,298 (-9.84%)
Losses	Nil.	
Gains	Fig Tree Pocket, south of Cubberia Creek from Maiwar .	
Rationale	As growth is needed for Moggil, the Fig Tree Pocket suburb has been gained as it represents a closer community of interest with Kenmore, its commercial centre, and school catchments than the tenuous connection with the rest of Maiwar.	

Mount Ommaney



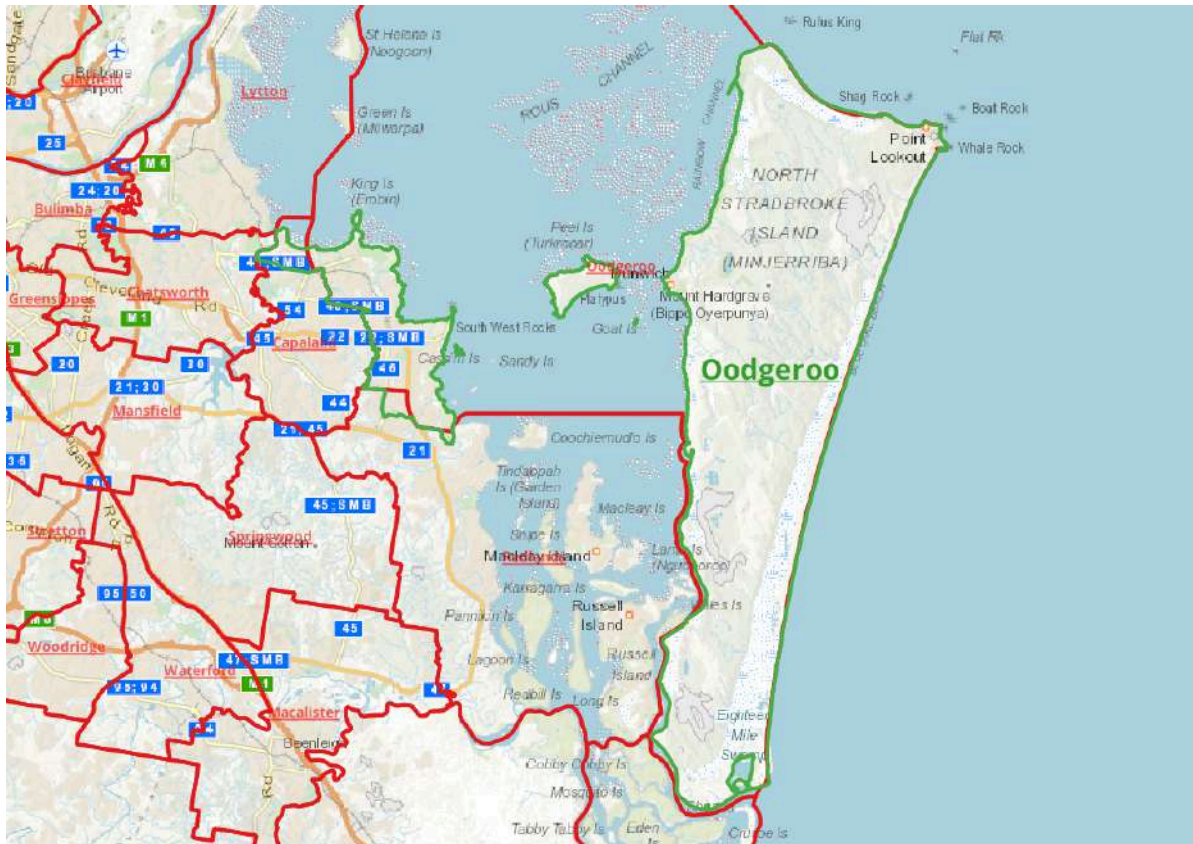
Boundaries	2025 population	2032 projections
Current	37,187 (-7.64%)	37,653 (-15.73%)
Proposed	43,924 (+9.09%)	44,459 (-0.53%)
Loses	Parts of Oxley south of Houghton Park linear reserve and the train line to Inala .	
Gains	Chelmer, Graceville and the remainder of Sherwood east of Oxley Creek from Miller . Parts of Wacol west of Ipswich Road from Inala .	
Rationale	<p>The suburbs east of Oxley Creek were historically connected to the remainder of Mount Ommaney through the historic Sherwood Shire which initiated the settlement patterns of the area. The suburbs along Oxley Road especially maintain a strong community of interest and remain largely accessible only to each other because of the hard border of Oxley Creek. The southern parts of Oxley south of the linear reserve share a stronger community of interest with Inala through the Blunder Road commercial precinct. The northern parts retain a stronger connection to the historic Oxley Road communities.</p>	

Nudgee



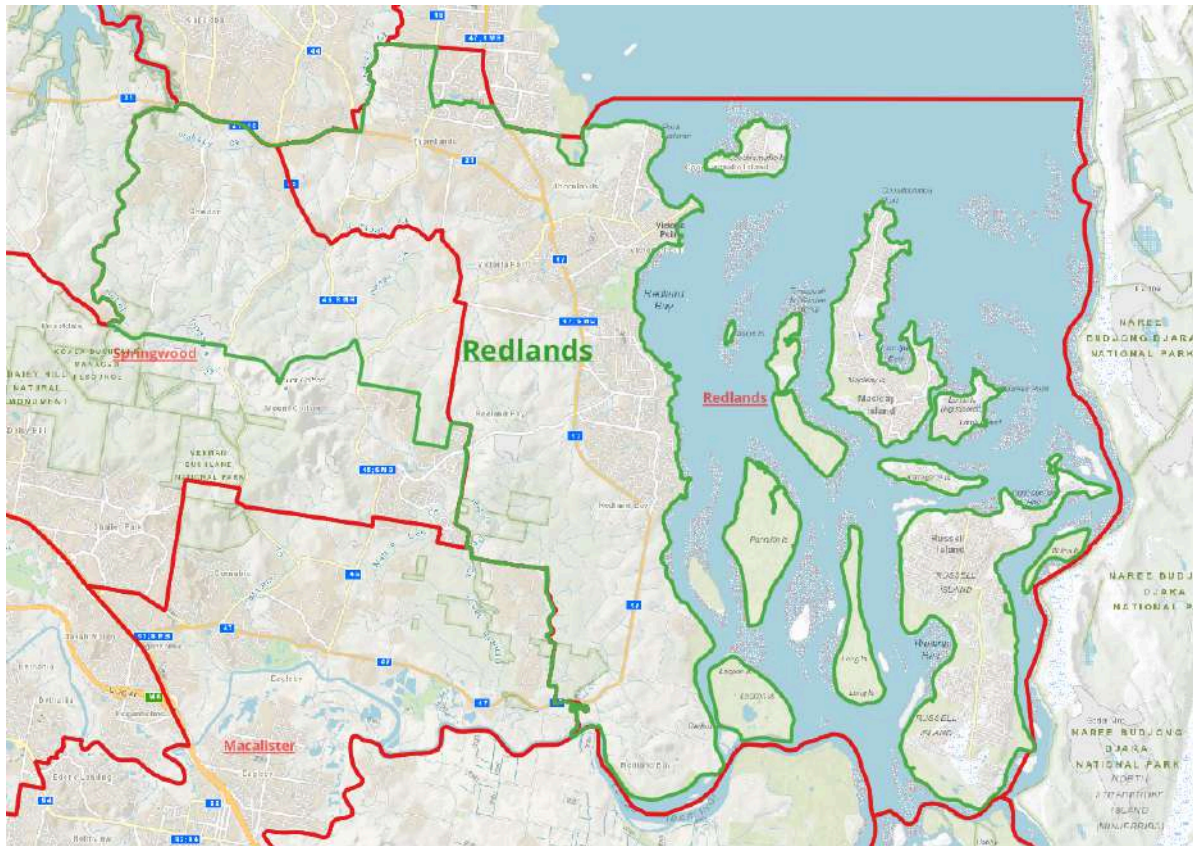
Boundaries	2025 population	2032 projections
Current	40,647 (+0.95%)	42,325 (-5.27%)
Proposed	37,146 (-7.74%)	38,676 (-13.47%)
Losses	Wavell Heights and parts of Nundah and Toombul west of Sandgate Road and south of Downfall Creek to Stafford .	
Gains	Taigum and the parts of Carseldine south of Cabbage Tree Creek from Aspley .	
Rationale	By uniting the Wavell Heights Community in Stafford, the Nudgee electorate needs to expand. Cabbage Tree Creek and the Redcliffe Peninsula Line - Springfield line are natural boundaries and allow the communities of Taigum and Boondall to be united and connected with the major employment and community centres in Virginia, Banyo and Chermside. These boundaries also better encompass local primary school catchments and their communities.	

Oodgeroo



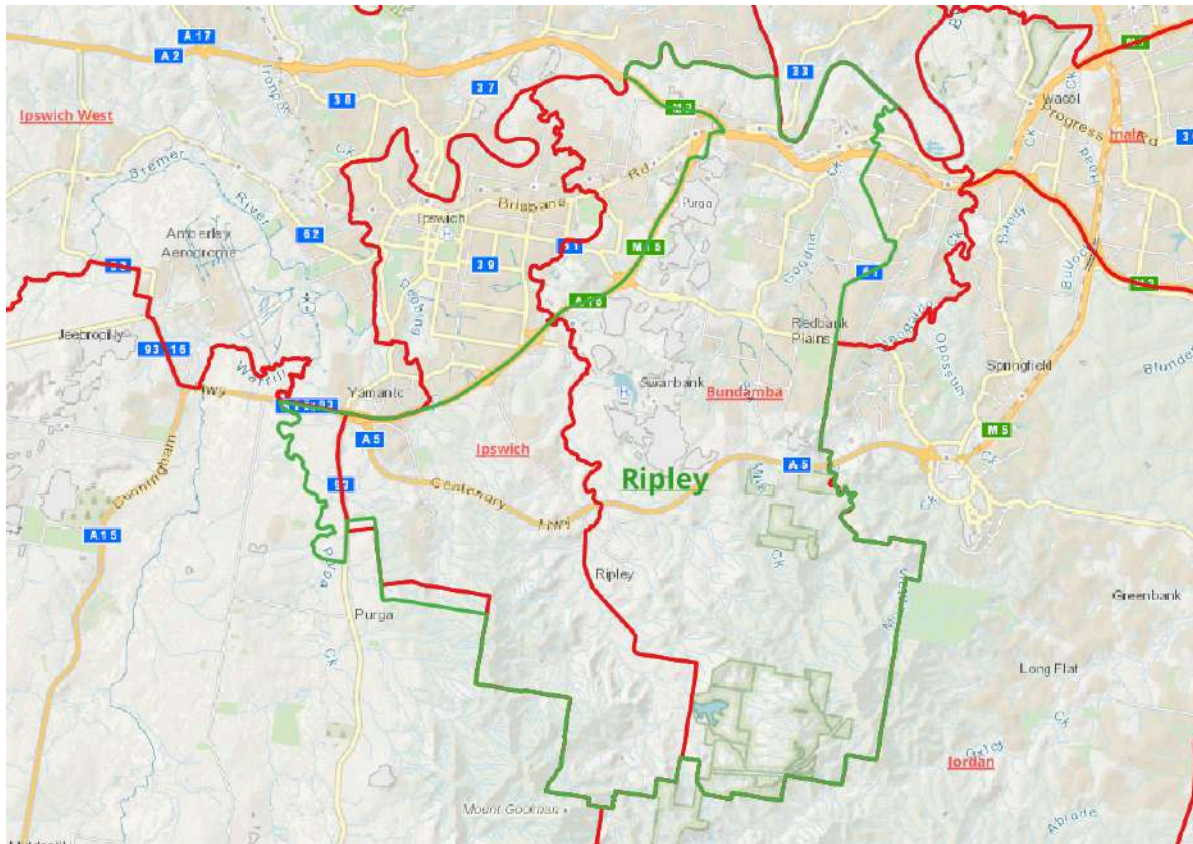
Boundaries	2025 population	2032 projections
Current	35,350 (-12.21%)	37,823 (-15.34%)
Proposed	41,094 (+2.06%)	43,730 (-2.16%)
Losses		
Gains	Parts of Thornlands east of Wellington Street and north of Crystal Waters Wetland from Redlands . Thornside north of Quarry Road from Capalaba .	
Rationale	Gaining Thornside unites more of the coastal bay communities and their shared interests along the northern Redlands coast. The expansion in Thornlands follows the natural boundary through Crystal Waters Park and enables the required population growth without crossing the harder boundary of the Hillards Creek Conservation areas, and better encompasses the local primary and secondary school catchment areas.	

Redlands



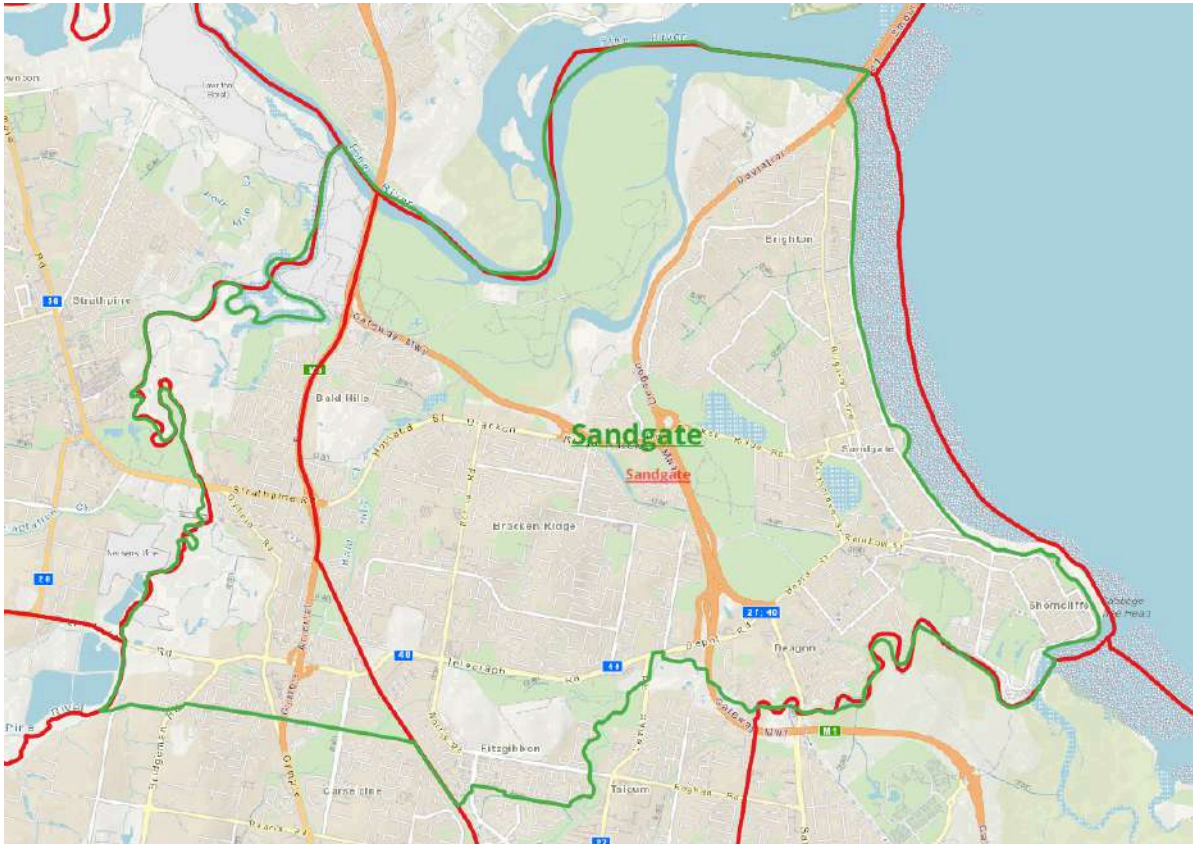
Boundaries	2025 population	2032 projections
Current	43,404 (+7.80%)	47,682 (+6.72%)
Proposed	42,701 (+6.05%)	46,888 (+4.90%)
Loses	Parts of Thornlands east of Wellington Street and north of Crystal Waters Wetland to Oodgeroo . Parts of Capalaba north of Hilliards Creek to Capalaba .	
Gains	Sheldon and parts of Mount Cotton north of Double Jump Road from Daisy Hill .	
Rationale	The rural areas of Mount Cotton, lack physical connection to the current Springwood electorate and as part of the Redlands Local Government Area, are better served by being connected with the rest of the LGA.	

Ripley (formerly known as Bundamba)



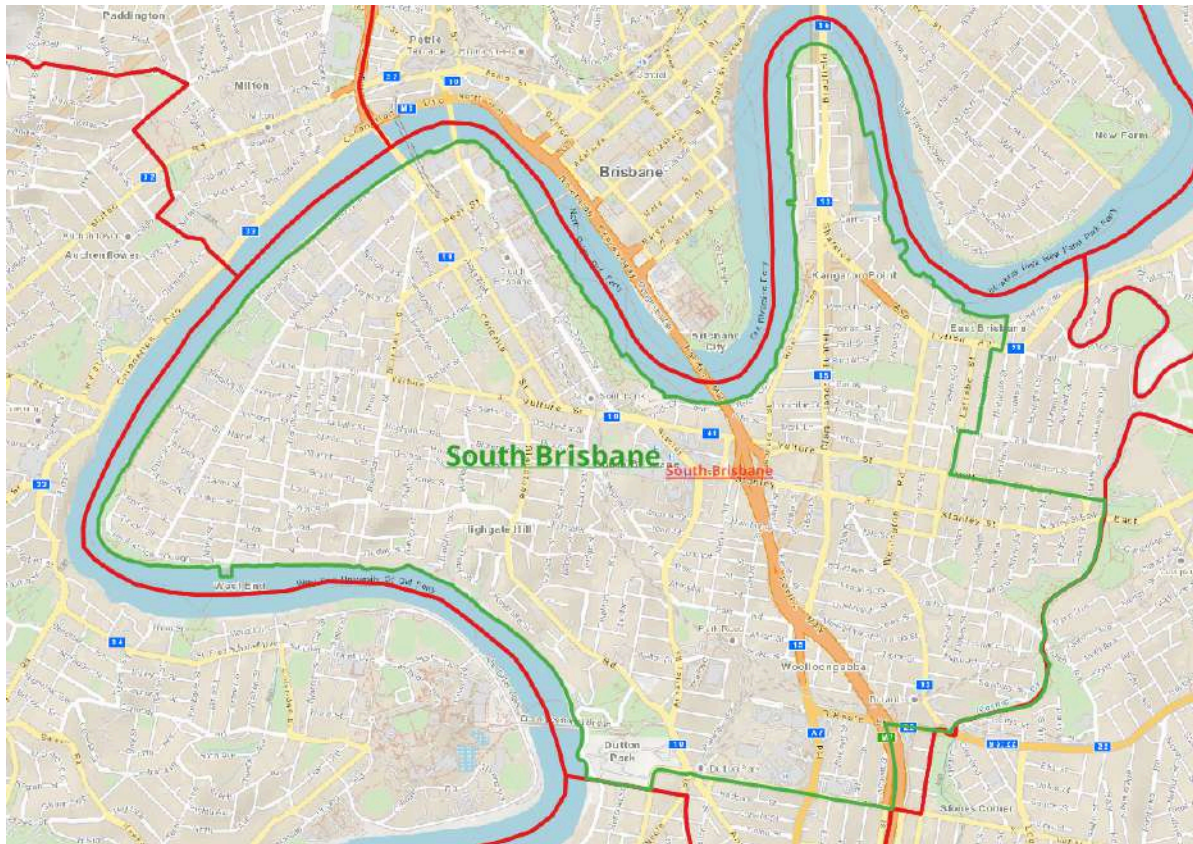
Boundaries	2025 population	2032 projections
Current	47,062 (+16.88%)	57,674 (+29.09%)
Proposed	38,462 (-4.48%)	55,647 (+24.50%)
Losses	Bundamba, Ebbw Vale, Dinmore and Blackstone north of Ipswich Motorway and south of Warrego Highway to Tulmar . Goodna and Bellbird Park east of Redbank Plains Road to Jordan .	
Gains	Ripley and Deebling Heights and parts of Riverview and South Ripley from Tulmar .	
Rationale	With significant growth currently occurring in the Ripley Valley region, which is expected to continue. The communities in Ripley and Deebling Heights are designed to be substantially interconnected, and will be a clear activity centre in the near future, with the area development scheme centring the future urban and community core at the Ripley Road and Centenary Highway intersection. The new boundaries unite these communities of shared interests to ensure they are properly represented and continue to be in the future.	

Sandgate



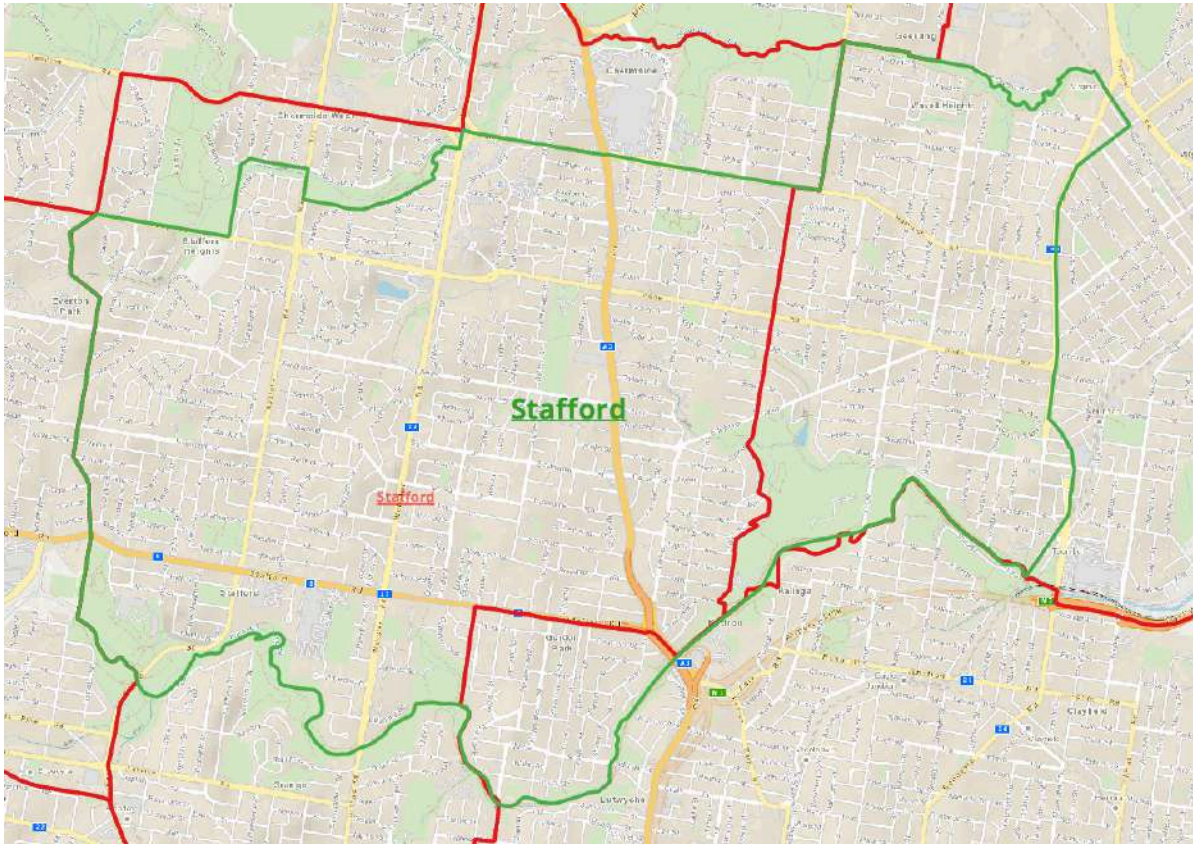
Boundaries	2025 population	2032 projections
Current	39,372 (-2.22%)	40,138 (-10.16%)
Proposed	37,114 (-7.82%)	37,861 (-15.29%)
Losses	Taigum and the parts of Carseldine south of Cabbage Tree Creek to Nudgee .	
Gains	Parts of Carseldine and the remainder of Bald Hills north of Roghan Road and east of South Pine River from Aspley .	
Rationale	South Pine River is a natural western boundary, uniting the Bald Hills communities previously divided by the long, thin peninsular extension of Aspley. This better connects these communities with Bracken Ridge along the natural connections of Bracken Ridge Road and Linkfield/Telegraph Road.	

South Brisbane



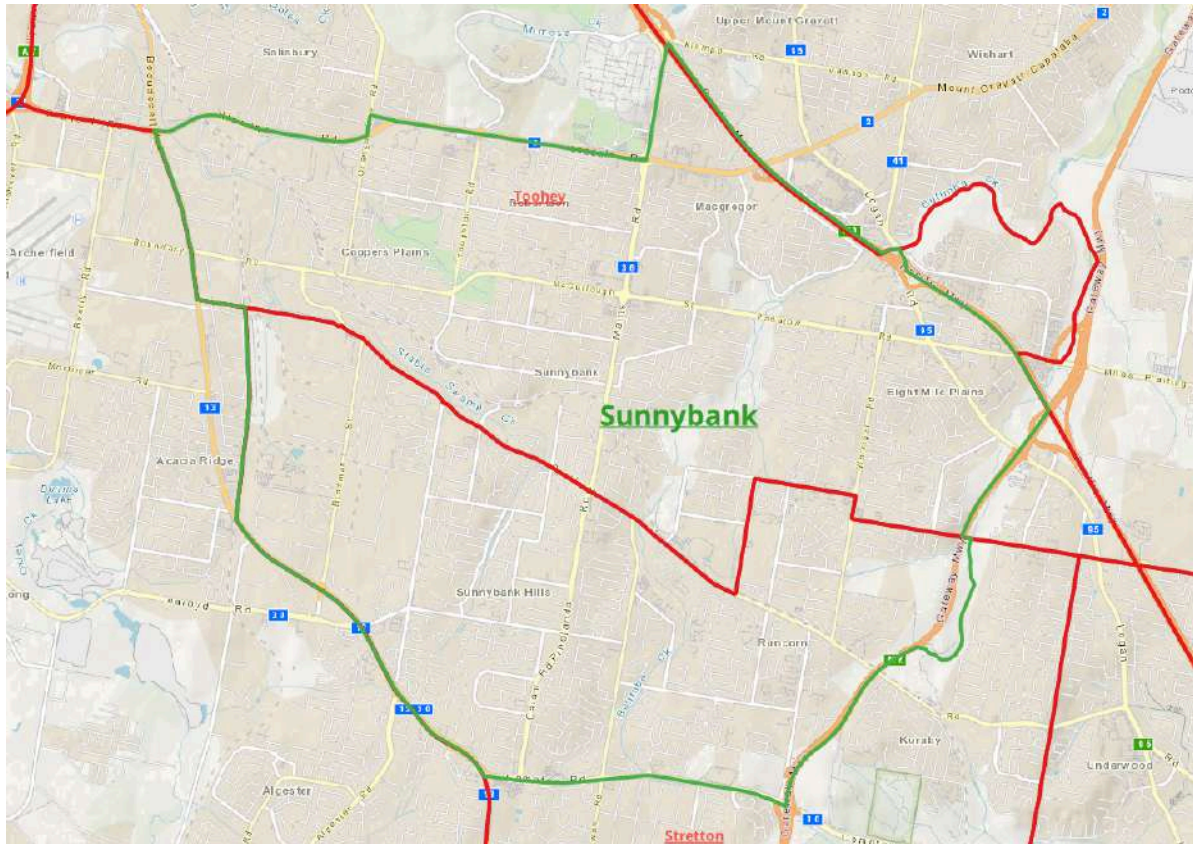
Boundaries	2025 population	2032 projections
Current	42,034 (+4.40%)	52,792 (+18.16%)
Proposed	37,865 (-5.96%)	48,456 (+8.41%)
Losses	The remainder of Annerley south of Cornwall Road to Miller . East Brisbane west of Latrobe Street and north of Vulture Street to Bulimba . Remainder of Buranda, east of the Pacific Motorway to Greenslopes .	
Gains	Nil.	
Rationale	The easiest change here is reconnecting the remainder of Annerley that are currently divided along a suburban street. After that shift, any boundary change in South Brisbane becomes complicated. We're proposing to shift East Brisbane, east of Latrobe Street to Bulimba as the suburban character of this community is different to the very urbanised character of South Brisbane and Kangaroo Point – and increasingly urban character of West End and Woolloongabba. East Brisbane's demographics are more similar to those communities east of Norman Creek. Losing any other part of the district would sever existing communities of interest and cannot sensibly follow any geographic boundaries.	

Stafford



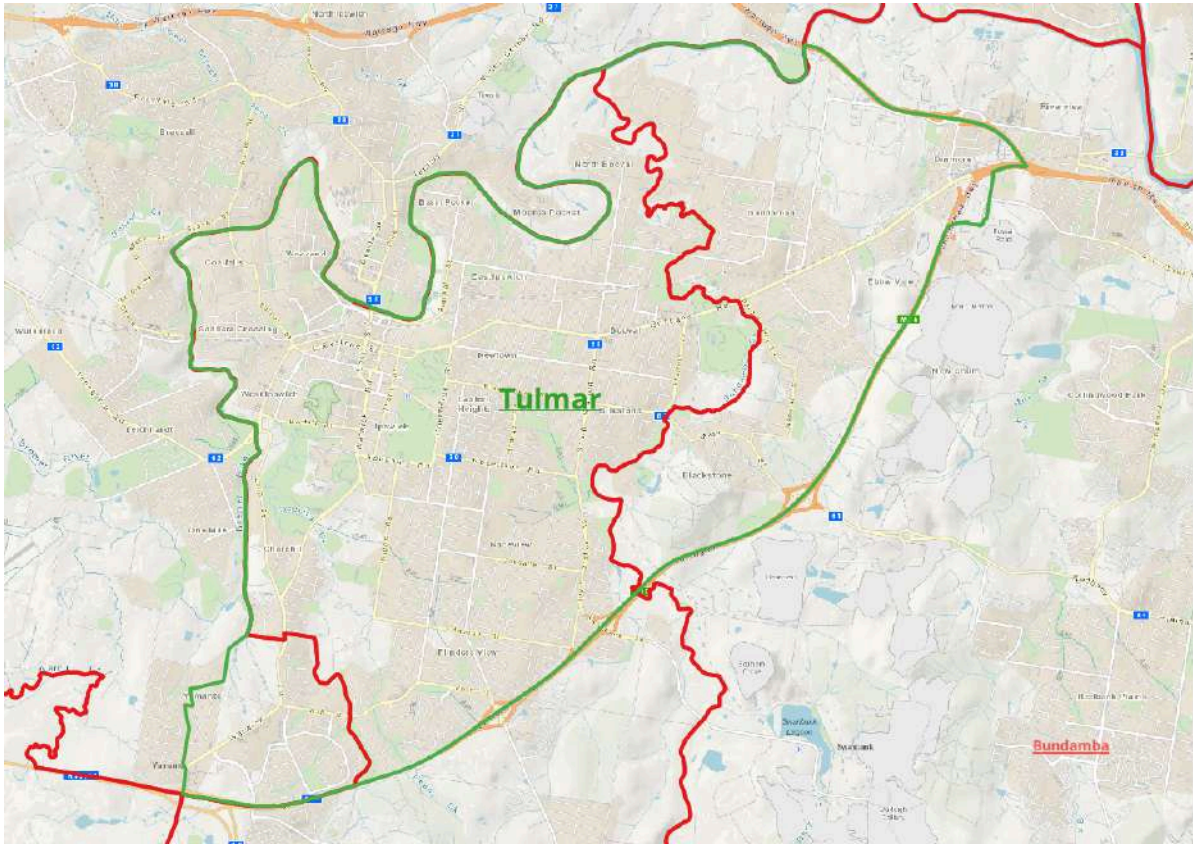
Boundaries	2025 population	2032 projections
Current	41,234 (+2.41%)	43,601 (-2.41%)
Proposed	37,707 (-6.35%)	39,546 (-11.52%)
Loses	Chermside north of Hamilton Road and the remainder of Chermside West north of Downfall Creek to Aspley . Grange, Newmarket and Wilston and the remainder of Alderley south of Kedron Brook to Enoggera .	
Gains	Gordon Park north of Kedron Brook from Clayfield . Wavell Heights and parts of Nundah and Toombul west of Sandgate Road and south of Downfall Creek from Nudgee .	
Rationale	Gordon Park is inaccessible from Clayfield district except by one road bridge, being separated by the impermeable Kedron Brook. It shares a stronger community of interest with Stafford district, sharing a commercial centre and school catchments. Existing boundaries also arbitrarily separates Chermside West. We're proposing to use Downfall Creek and Hamilton Road — particularly Westfield Chermside — as mostly impermeable barriers uniting Chermside North and Chermside West more closely with Aspley district than Stafford.	

Sunnybank (formerly known as Toohey)



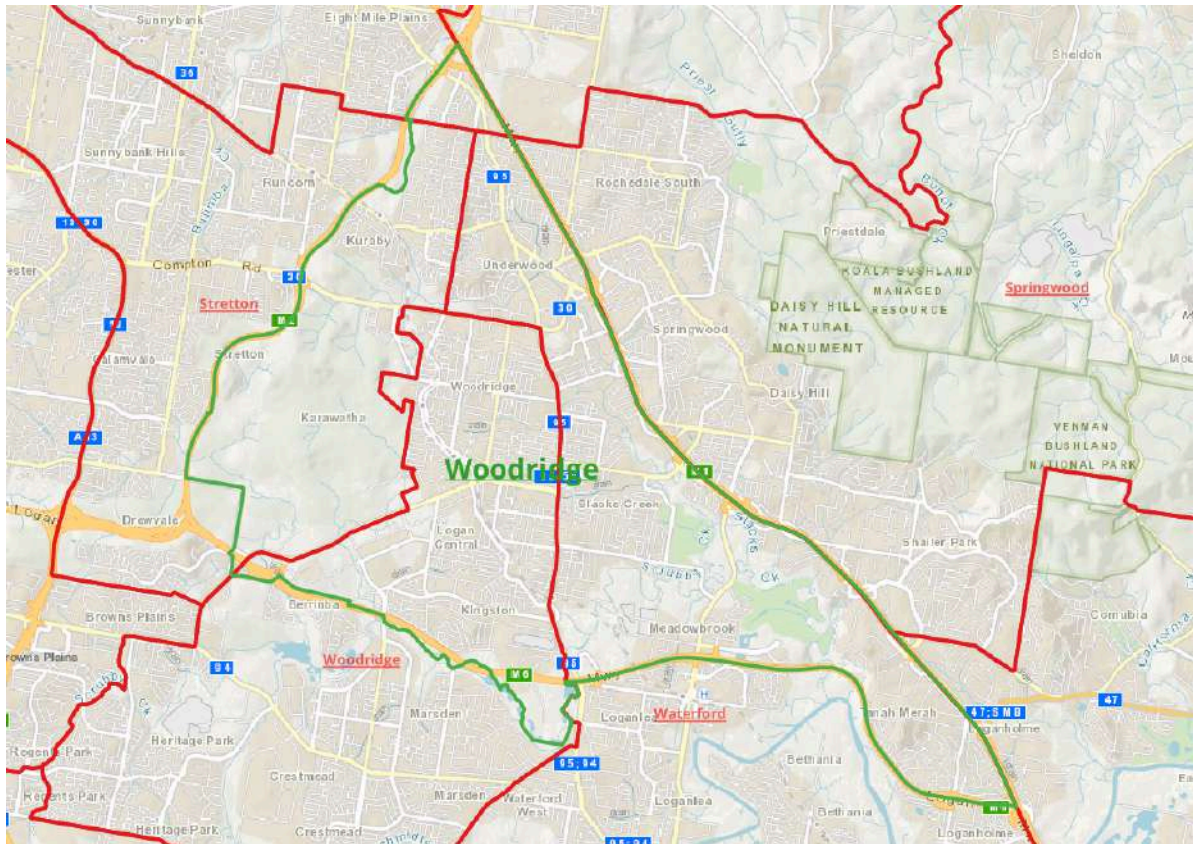
Boundaries	2025 population	2032 projections
Current	34,942 (-13.22%)	36,833 (-17.56%)
Proposed	38,863 (-3.48%)	40,515 (-9.36%)
Loses	Rocklea west of the train line to Algester . Moorooka, Salisbury and Nathan north of Riawena and Kessels Road to Miller . Parts of Eight Mile Plains surrounding Holmead Road and south of Bulimba Creek to Mansfield . Parts of Eight Mile Plains bounded by Gateway Motorway, Pacific Motorway and Underwood Road to Woodridge .	
Gains	Sunnybank Hills, the industrial parts of Acacia Ridge and the remainder of Runcorn from Stretton .	
Rationale	Abolishing Stretton allows all the suburbs with a clear community of interest with central Sunnybank to be united. The Moorooka, Salisbury and Nathan community share a neighbourhood plan with areas further up Ipswich Road. The Holmead Road precinct is separated by the hard border of Pacific Motorway, only accessible via Mansfield and having a much closer community of interest with them because of their local shops at Westfield Mt Gravatt and Coles Rochedale. The Levington Road precinct is only accessible via Logan Road and is much closer connected with Underwood and Kuraby.	

Tulmar (formerly known as Ipswich)



Boundaries	2025 population	2032 projections
Current	40,721 (+1.13%)	52,877 (+18.35%)
Proposed	41,047 (+1.94%)	45,379 (+1.53%)
Losses	Ripley and Deebling Heights and parts of Riverview and South Ripley to Ripley .	
Gains	Parts of Yamanto east of Jacaranda Drive from Ipswich West . Bundamba, Ebbw Vale, Dinmore and Blackstone north of Ipswich Motorway and south of Warrego Highway from Ripley .	
Rationale	<p>The existing boundaries of Tulmar follow the western bank of Bundamba Creek south, combining the more established suburbs in central Ipswich with the new build suburbs in Ripley Valley. This cuts out the established suburbs of Bundamba and Ebbw Vale from their community of interest with central Ipswich. Most established suburbs in south Ipswich are north of the Ipswich Motorway while the new builds are almost all south of the motorway.</p> <p>Changing the natural boundary from Bundamba Creek to Ipswich Motorway better preserves real communities of interest.</p>	

Woodridge



Boundaries	2025 population	2032 projections
Current	41,671 (+3.49%)	43,831 (-1.90%)
Proposed	39,024 (-3.08%)	40,973 (-8.33%)
Losses	Heritage Park, Crestmead and Marsden south of Scrubby Creek to Berrinba .	
Gains	Underwood and Slacks Creek, parts of Meadowbrook, Tanah Merah and Loganholme north of the Logan Motorway and the remainder of Kingston from Berrinba . Karawatha and Kuraby and parts of Eight Mile Plains south of Underwood Road from Stretton .	
Rationale	The current district of Waterford is a very odd shape because it is following local government boundaries that separate Underwood in Logan from Eight Mile Plains in Brisbane along Millers Road, despite these areas sharing a clear community of interest and geographic proximity. Underwood is 20 kilometres from Bethania in Waterford, sharing no community of interest but following the Pacific Motorway. Reorienting Woodridge to be an east-west axis district ignoring local government boundaries better reflects how local residents live.	