

**Submission ID:** S-00103  
**Date Received:** 6/8/2025, 4:00 pm  
**Name:** Tanya Tuttle  
**Organisation Name:** Babinda District Community Association Inc trading as Babinda Taskforce  
**Submission Topic:** Electorate Boundaries  
**Electoral District:** Hill;Mulgrave  
**Multiple Signatories:** No

**Submission:**

See below

# BABINDA DISTRICT COMMUNITY ASSOCIATION INC

ABN: 69 217 884 006



Wednesday 6<sup>th</sup> August 2025

To the members of the Queensland Redistribution Commission,

This submission is on behalf of the Babinda District Community Association a not-for-profit community organisation that has been in operation since 1999.

This submission relates to the electoral districts of Hill and Mulgrave and is focussed on the boundaries of these two electorates.

We propose the following change: that the geographical areas of Cairns Local Government Area (attachment one) that are currently located in the state electorate of Hill (attachment two) be transferred to the state electorate of Mulgrave (attachment three).

We believe there is sound justification for this change based on economic, social, regional and other 'community of interest' factors.

The above change will also ensure that the number of electors remains balanced across the State's electorates. At the time the redistribution is finalised, both the electorates of Hill and Mulgrave would remain within the maximum threshold of 10 per cent above (Mulgrave) and 10 per cent below (Hill) the current quota and, as per the 2025 discussion paper, these two electorates would also remain in quota based on the projected enrolment and variation range listed for the period June 2032.

At present, the Cairns LGA localities that are located in Hill; Bellenden Ker, Babinda, Mirriwinni, Bramston Beach, Eubenangee, Bartle Frere, Wopen Creek and Waugh Pocket, are located in division one of Cairns Local Government Area (attachment four).

Division one is the only rural division in the Cairns LGA; with localities in the northern part of division one (Deeral, Fishery Falls, Aloomba, etc) located in the Mulgrave state electorate, furthering the interests of this largely rural area are diminished as political representation is split.

However, it is not simply a matter of current local government and state government boundaries; there are other very clear economic, social, regional and other 'community of interest' factors; these are recorded as far back as the 1999 redistribution.

Page 18 of the 1999 Final Determination Report states:

*The Commission received 182 letters from residents of the Mirriwinni area, and from the Babinda District Community Association Inc., the Babinda Chamber of Commerce, Naomi Wilson and the Mulgrave Electorate Council of the National Party of Australia Queensland objecting to the Mulgrave/Tablelands boundary on the basis that it divided the township of Mirriwinni and included residents of Waugh Pocket, Wopen Creek, Bartle-Frere and Stagers Road in the electorate of Tablelands rather than the Mulgrave electorate.*

*The main reasons given for the objections were:*





- the area lies to the east of the Bellenden Kerr Range and has no community of interest with the Tablelands electorate as the climate, farming practices and lifestyle are different;
- as regards to ways of communication and travel, there is no direct route between the area and the Tablelands, only a circuitous route through the Mulgrave electorate;
- the Commission has ignored local government boundaries in the area;
- the boundary results in many residents of the Mulgrave electoral district being cut off from their farms, which will be in the Tablelands electorate;
- residents of the area will be unable to easily access their Parliamentary representative; and
- all government services will be supplied by providers based outside the electorate.

***The Commission recognises the validity of these objections and has altered the Mulgrave/Tablelands boundary so as to include the township of Miriwinni, and the adjoining rural area, within the electorate of Mulgrave. This alteration has resulted in the Mulgrave electorate complying more closely with many of the redistribution criteria*** (emphasis added).

Unfortunately, in the 2017 redistribution, the Cairns LGA localities listed above were transferred from the Mulgrave electorate with the creation of Hill (after remaining in the Mulgrave electorate in the 2008 review and redistribution).

The 2017 Final Determination Report states:

*Hill's creation has the desirable effect of uniting much of the Tablelands region...*

This may be true but the inclusion of the above listed Cairns LGA localities divided the Cairns region.

We acknowledge that it would appear that in 2017, only one public objection was made, by Patsy Hannam, dated March 2017, who correctly stated:

*Babinda, Mirriwinni and Bartle Frere are part of Cairns Regional Council. Under the redistribution, we would be moved to Tully and the Atherton Tablelands. Most of our business is connected with Cairns, and our centre is funded by the Cairns Council. We feel that Cairns should not be divided, and the new boundaries moved south to the Cassowary Coast council boundaries.*

The Babinda District Community Association urges the commission in this redistribution to revert to the former southern boundary for the electorate of Mulgrave. The reasons given by the community in 1999 continue to be true.

The issues we experience on the coast are not the same as those in the rural and regional areas of the Tablelands region and even further west; we are separated by Wooroonooran National Park and the two highest mountains in Queensland, Mount Bartle Frere and Mount Bellenden Ker. At 1600 metres, this range constitutes a significant barrier between the communities of the Tablelands and the coast.

The altitude difference means there are huge differences in climate and soil types, which result in very different agricultural and horticultural operations. The dominant agricultural industry in Babinda and surrounding region is sugarcane; cane farmers who are affiliated with the industry body Canegrowers are affiliated with 'Canegrowers Cairns Region (Mulgrave)'.

The means of transportation and communications, as well as government institutions and other services are affiliated with and delivered by coastal based service providers, not Tablelands ones, and are therefore often outside the region's current electorate of Hill.

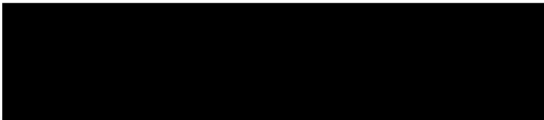
For the above reasons, the area we represent has a very limited community of interest with the Hill electorate and, as it was in 1999, access to our parliamentary representative remains a challenge.



It is also important to note that the change we have identified does not cause huge disruption and change to numerous electorates.

Finally, based on current demographic trends in the State, both the impacted state electorates of Hill and Mulgrave would remain within the commission's quota requirements.

Yours sincerely



**Tanya Tuttle**

*General Manager*

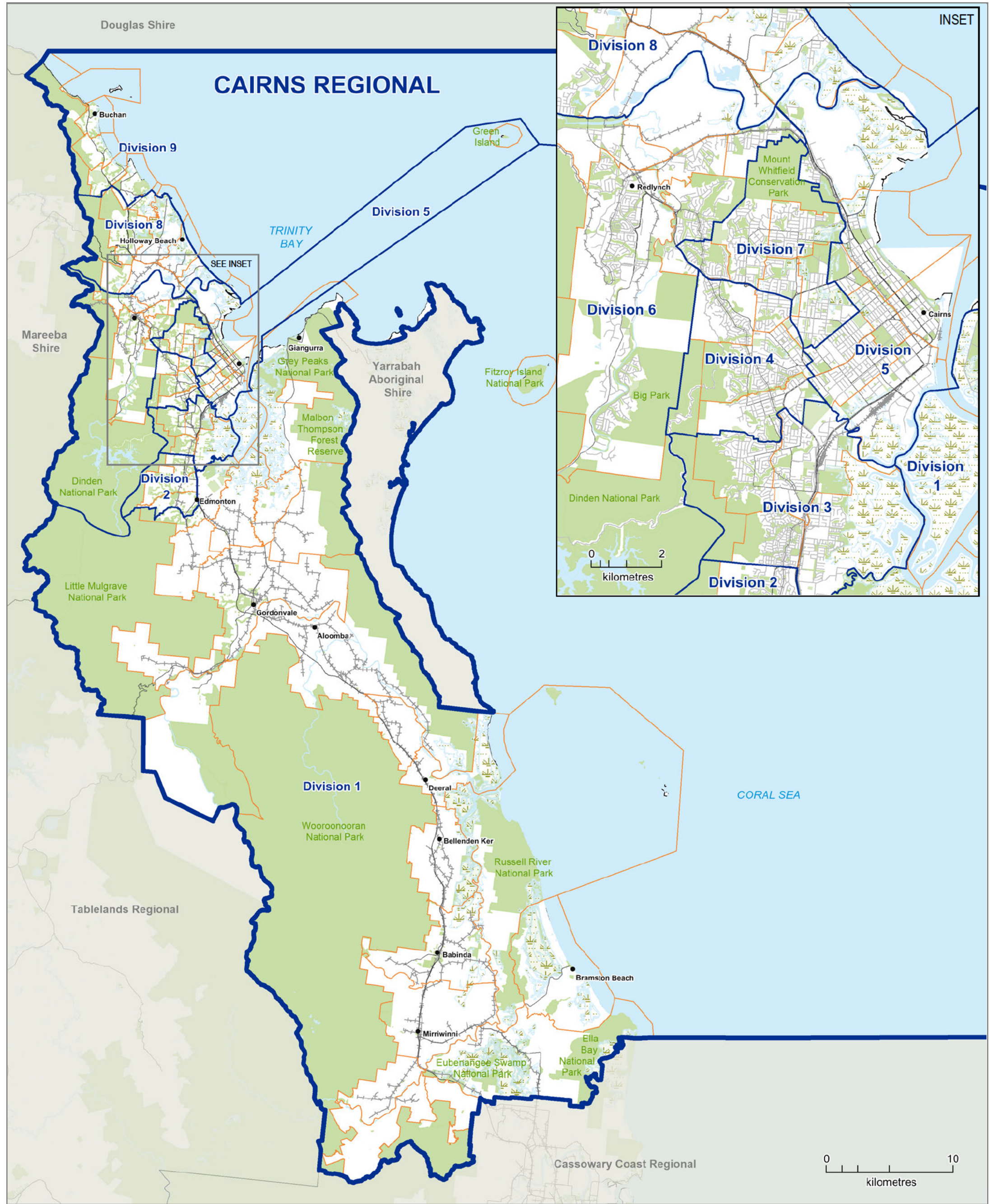
Babinda District Community Association Inc trading as *Babinda Taskforce*



51 MUNRO ST BABINDA Q 4861 | [WWW.BABINDATASKFORCE.NET.AU](http://WWW.BABINDATASKFORCE.NET.AU)

P: 07 4067 2900 | E: [TASKFORCE@BABINDA.NET.AU](mailto:TASKFORCE@BABINDA.NET.AU)



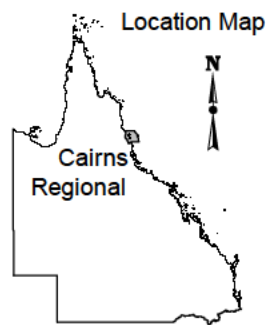


**2024 Local Government Area  
Electorates**

**CAIRNS REGIONAL**



**Electoral  
Commission**  
QUEENSLAND



**LEGEND**

- |                                |                   |           |
|--------------------------------|-------------------|-----------|
| Division Boundary              | Locality Boundary | Wetland   |
| Local Government Area Boundary | Reserve, Parkland | Main Road |
| Adjacent Local Government Area | Waterbody         | Railway   |

This product was created using datasets from various authoritative sources, and is intended as a guide only to display electoral boundaries and polling booth locations.

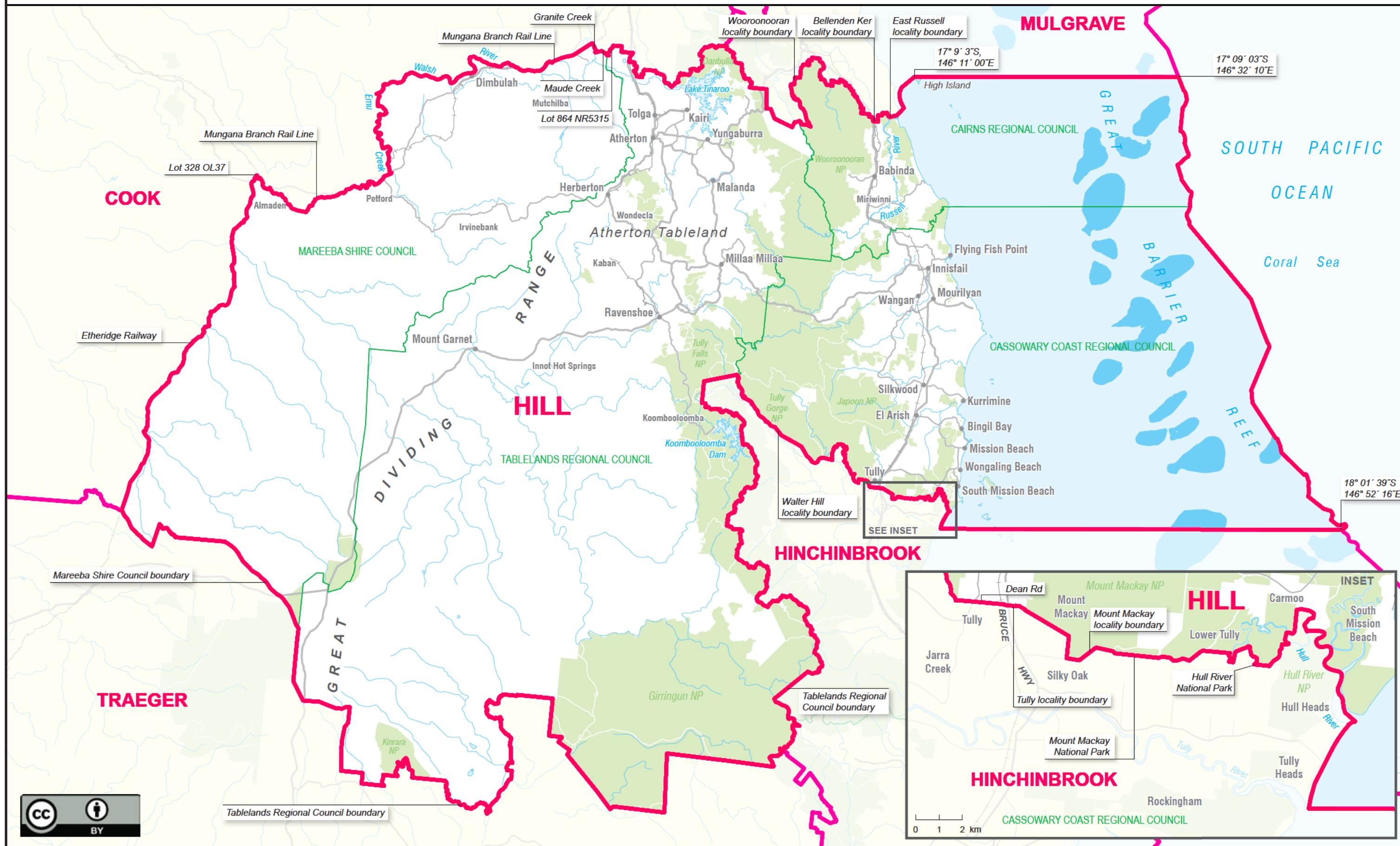
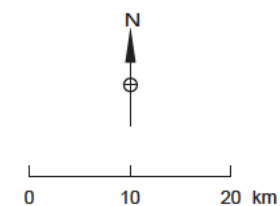
© The State of Queensland 1995 - 2024 (Department of Resources)

© Electoral Commission of Queensland 2024 Creative Commons (CC BY)

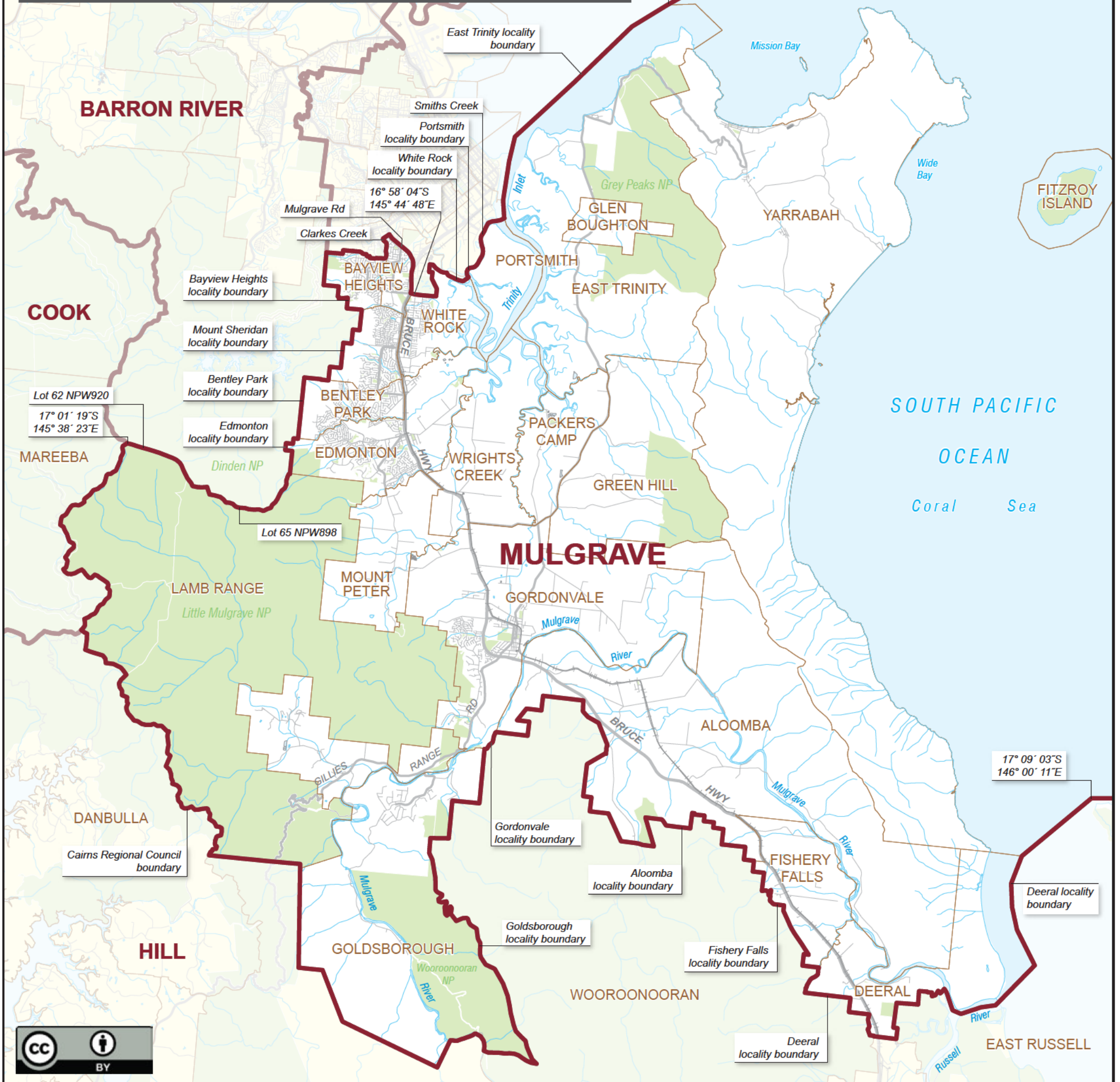
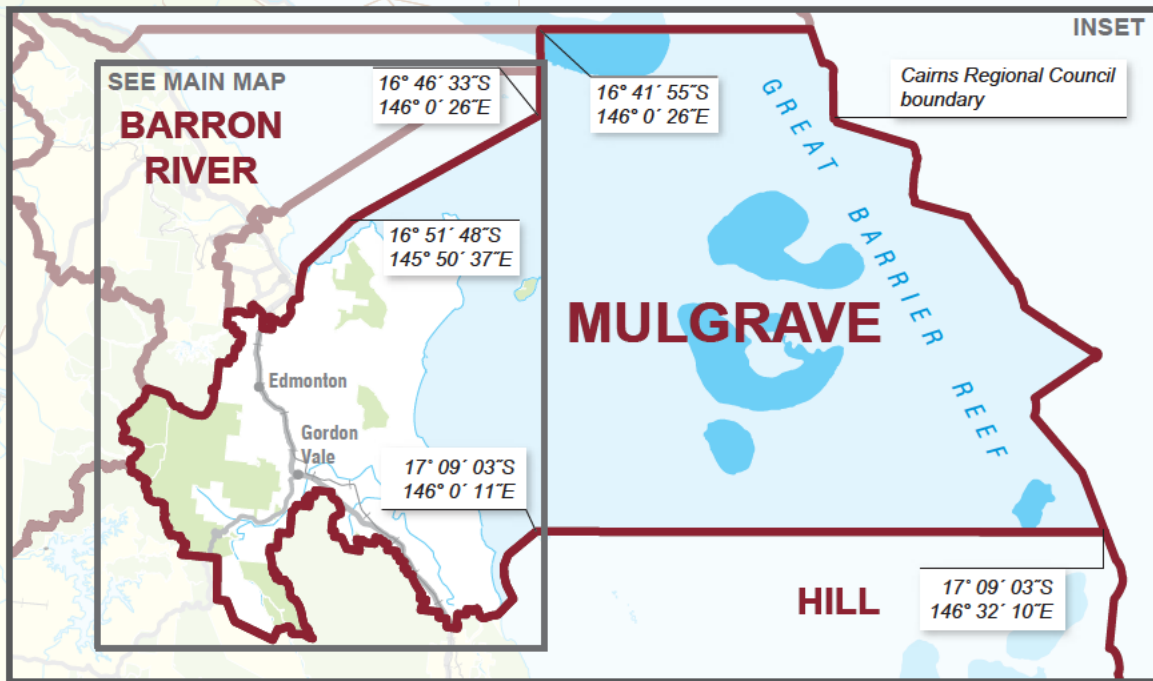


Boundary of Electoral District

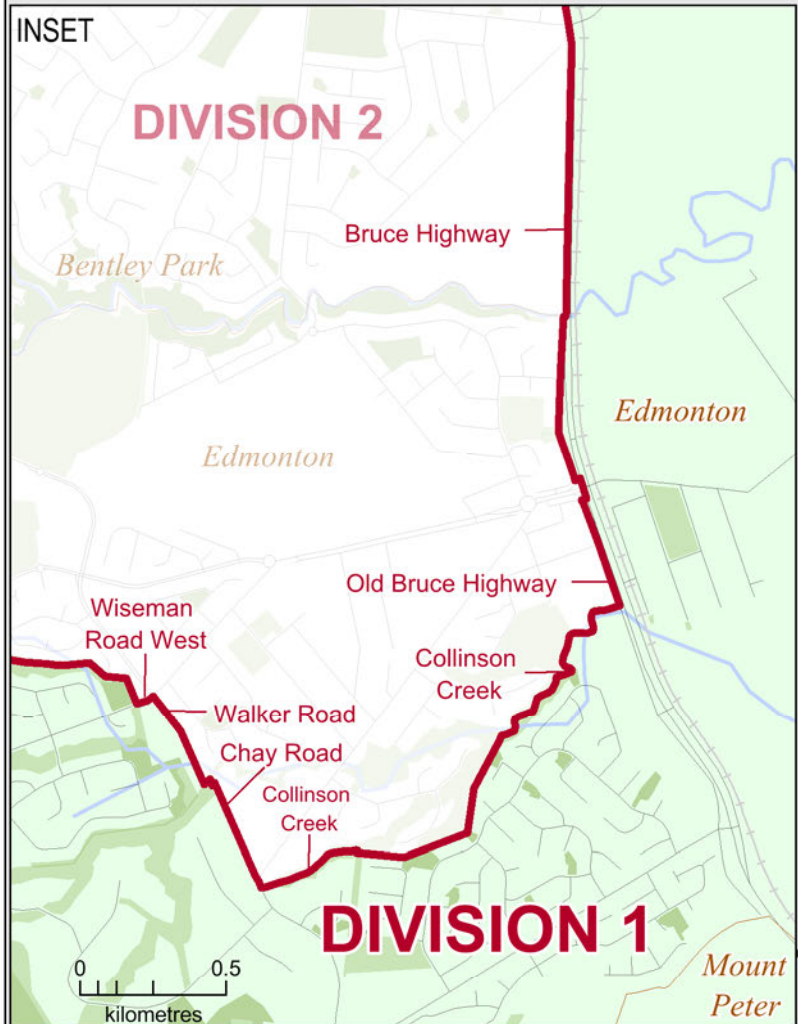
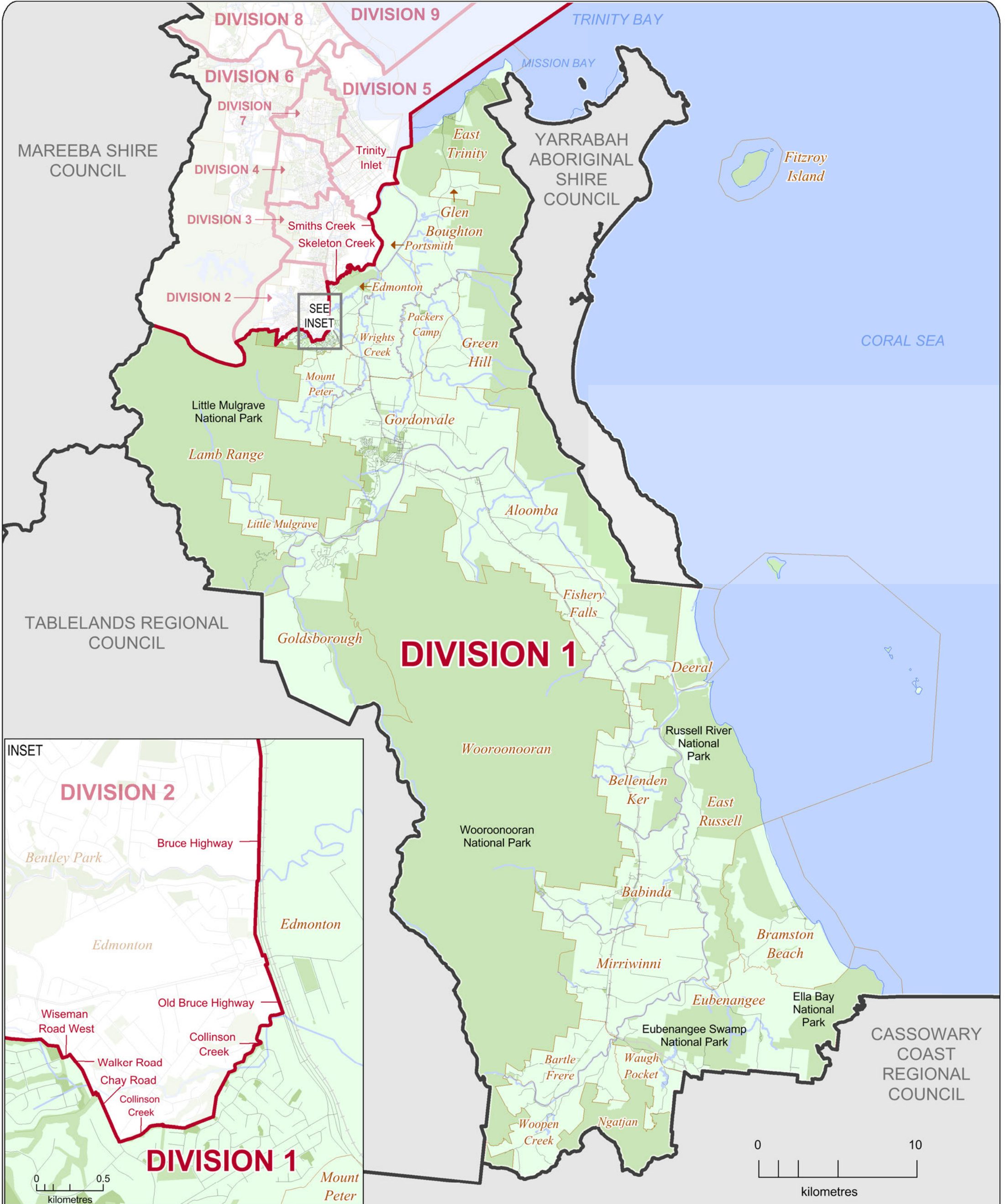
Local Government Area











DIVISION 1  
Location Map



**2015 DIVISIONAL BOUNDARIES  
CAIRNS REGIONAL COUNCIL  
DIVISION 1**

- Local Government Area Boundary
- Division Boundary
- Locality Boundary
- Road
- Railway
- Watercourse / Waterbody
- Reserve / Park

**DISCLAIMER**

While every care has been taken to ensure the accuracy of this product, the Electoral Commission Queensland (ECQ) makes no representations or warranties about its accuracy, reliability, completeness or suitability for any particular purpose and disclaims all responsibility and all liability (including, without limitation, liability in negligence) for all expenses, losses, damages (including indirect and consequential damage) and cost which might be incurred as a result of the data being inaccurate or incomplete in any way and for any reason.

This map has been produced by the ECQ as a guide only, to show electoral boundaries. It is not an official electoral boundary map.

© Electoral Commission of Queensland 2015 (Local Government Change Commission)  
© The State of Queensland - 2015 (Department of Natural Resources and Mines)  
© 2015 Pitney Bowes Software Pty Ltd. All rights reserved

