

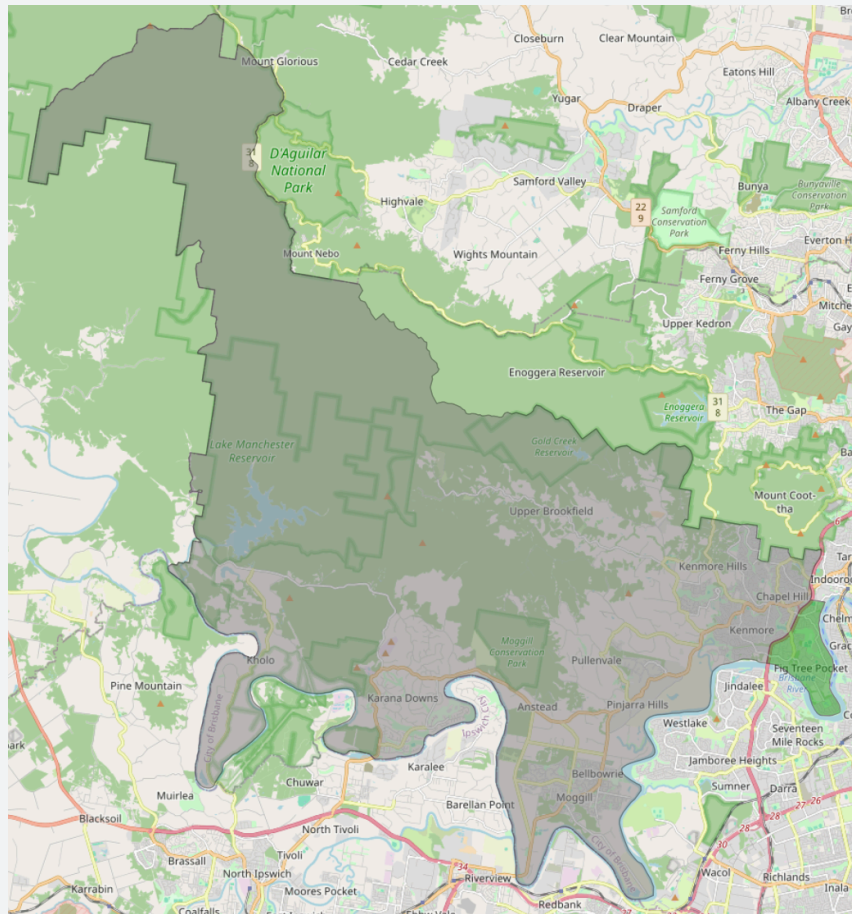
Submission ID: S-00109
Date Received: 6/8/25, 11:32 pm
Name: Corey Baker
Submission Topic: Electorate Boundaries and Names
Electoral District: Aspley; Clayfield; Cooper; Everton; Ferny Grove; Maiwar; McConnel; Moggill; Nudgee; Sandgate; Stafford
Multiple Signatories: No

Submission:

Boundary changes to Brisbane districts north of the Brisbane River to account for population changes. Includes a proposed name change for one district (Everton to Bunyaville).

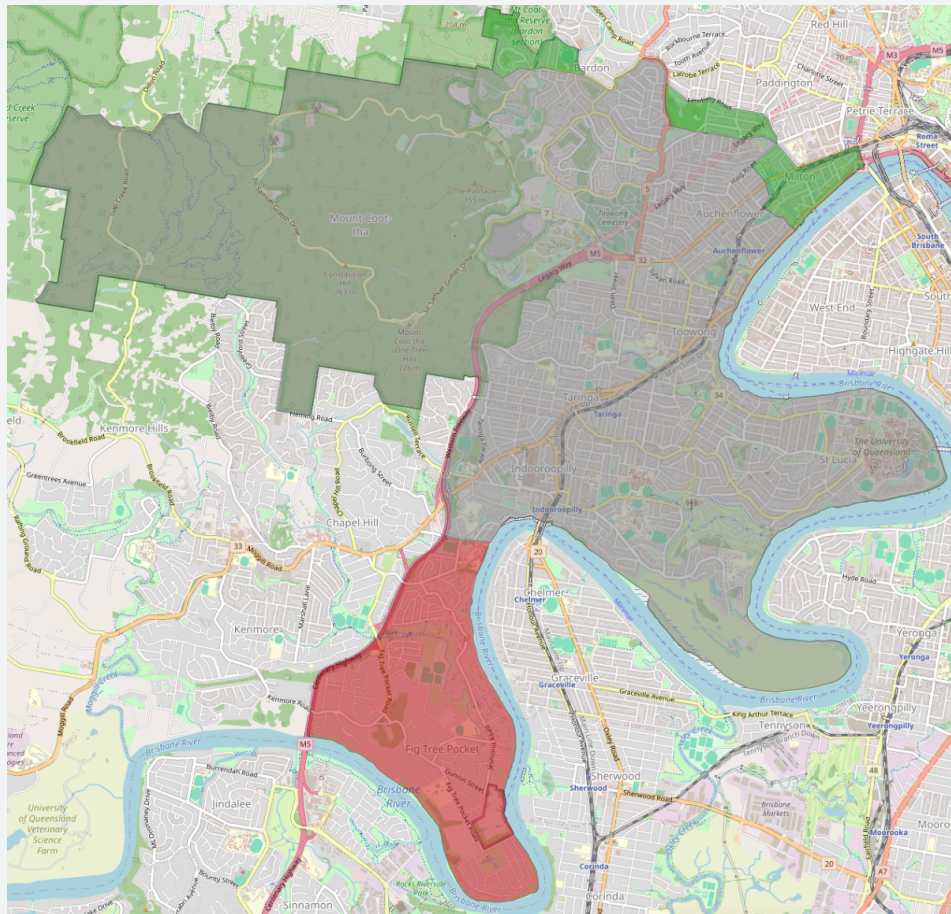
Submission contains a PDF detailing the proposed changes to each district, and a geojson file containing the proposed boundaries for all eleven districts. PDF includes a map for each district showing the proposed changes, the impacts on current and projected enrolment, and rationale for the proposed changes.

Moggill



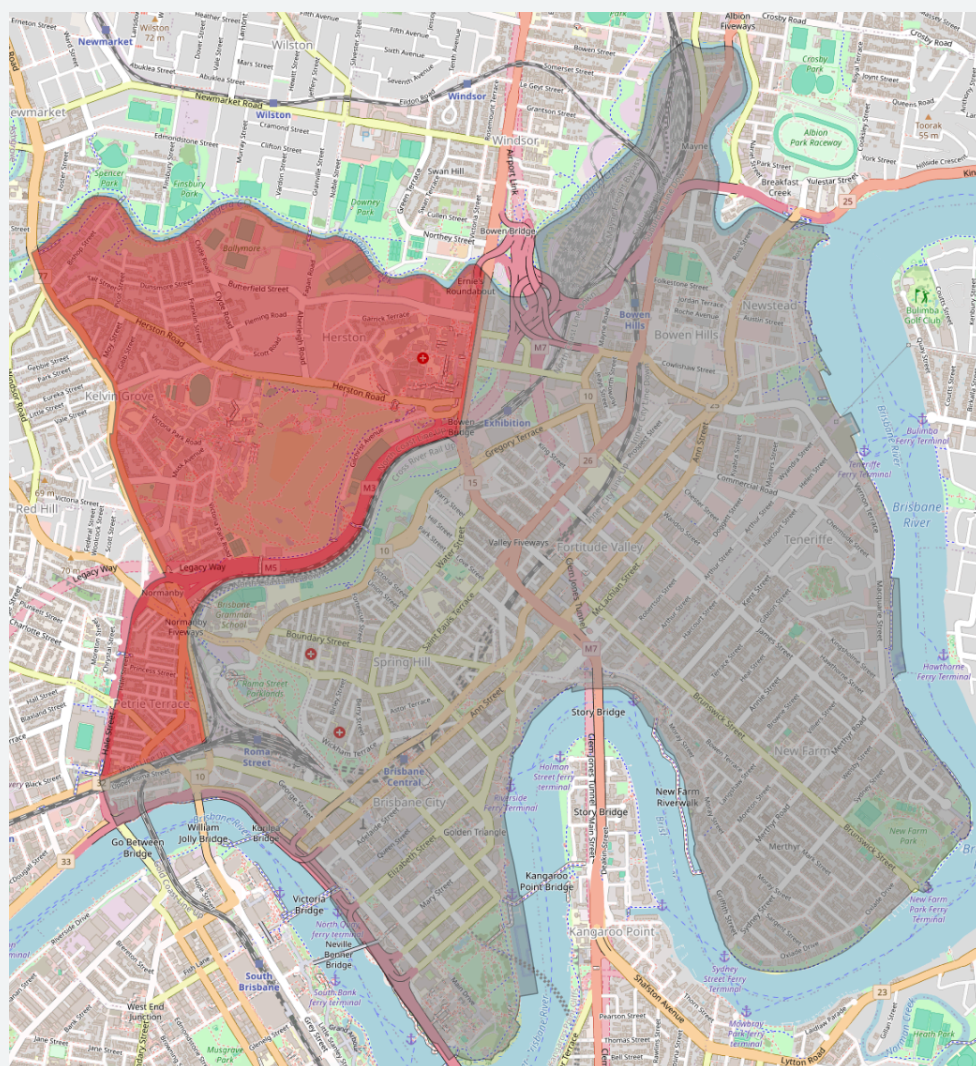
Boundaries	2025 Enrolment		2032 Enrolment	
Current	36,681	-8.90%	37,011	-17.16%
Proposed	40,581	0.79%	41,153	-7.89%
Loses	-			
Gains	Fig Tree Pocket and Indooroopilly (south of Witton Rd) from Maiwar .			
Rationale	<p>District needs to expand to keep pace with statewide growth. Maiwar present only neighbouring district with urban residential areas on both sides of boundary.</p> <p>The area to be transferred is physically disjoint from the rest of Maiwar (separated by a school, sports fields, and creek/bushland, and most road routes into the area pass through Moggill (Jerrang St, Fig Tree Pocket Rd, Kenmore Rd).</p> <p>Unites entire Kenmore - Brookfield - Moggill SA3 area in one district.</p>			

Maiwar



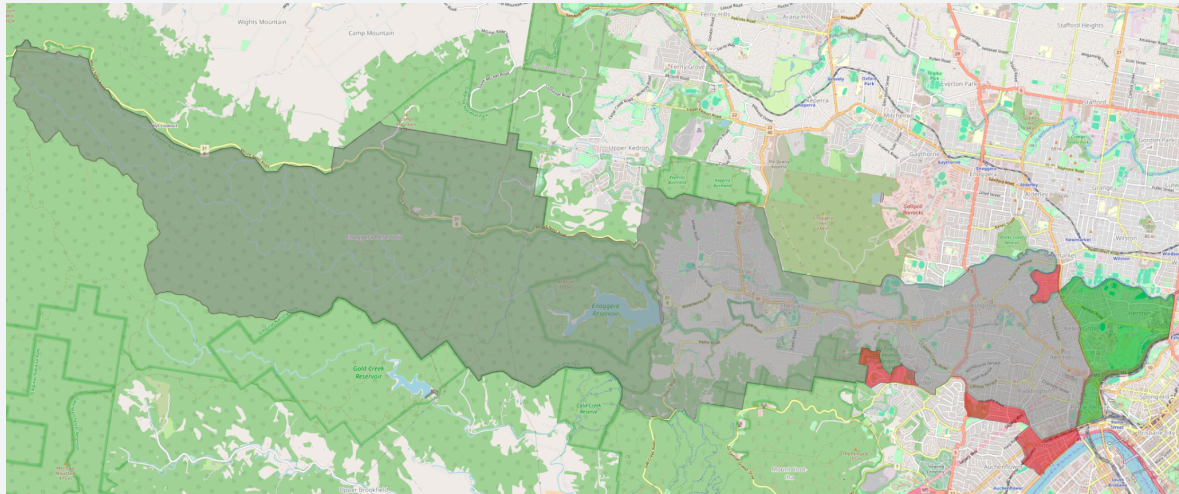
Boundaries	2025 Enrolment		2032 Enrolment	
Current	41,016	1.87%	37,011	-1.63%
Proposed	39,962	-0.75%	41,153	-4.00%
Loses	Fig Tree Pocket and Indooroopilly (south of Witton Rd) to Moggill .			
Gains	Remainder of Auchenflower (between Torwood St and Frew Park) and parts of Milton (south-west of Hale St/Milton Road/Barooka Rd) and Paddington (south of Fernberg Road) from Cooper . Part of Bardon (houses north of Simpsons Rd to the west of Bowman Park) from Cooper .			
Rationale	Rationale for loss covered in Moggill proposal. Gains from Cooper needed to offset the area lost to Moggill. Parts of Milton and Rosalie align with Maiwar's primary COIs (inner-west suburbs of Brisbane), and continue along existing major corridors largely within Maiwar (railway line, State Route 33, and the Brisbane River). Part of Milton physically disjoint from the rest of Cooper. Consolidates Rosalie precinct within one district. Part of Bardon also physically disjoint from rest of Cooper.			

McConnel



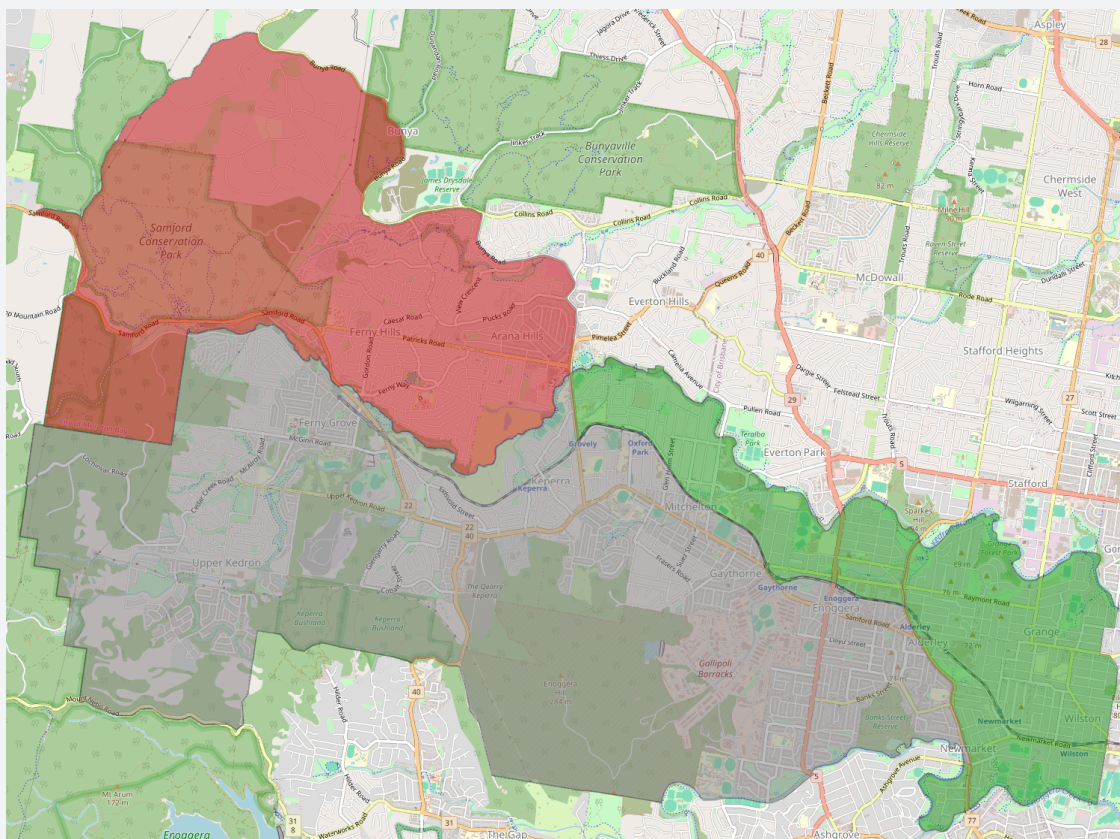
Boundaries	2025 Enrolment		2032 Enrolment	
Current	42,731	6.13%	53,667	20.12%
Proposed	37,416	-7.07%	47,076	5.36%
Loses	Petrie Terrace, Herston, remainder of Kelvin Grove to Cooper .			
Gains	-			
Rationale	District needs to contract to bring projected enrolment within quota. Loss to Cooper most reasonable (current boundaries with Clayfield and Stafford follow Breakfast Creek/Enoggera Creek, while with Cooper cuts through Kelvin Grove). Transferred area largely separate from rest of McConnel by Victoria Park and major roads/railway lines. Consolidates COI around QUT campus within Cooper.			

Cooper



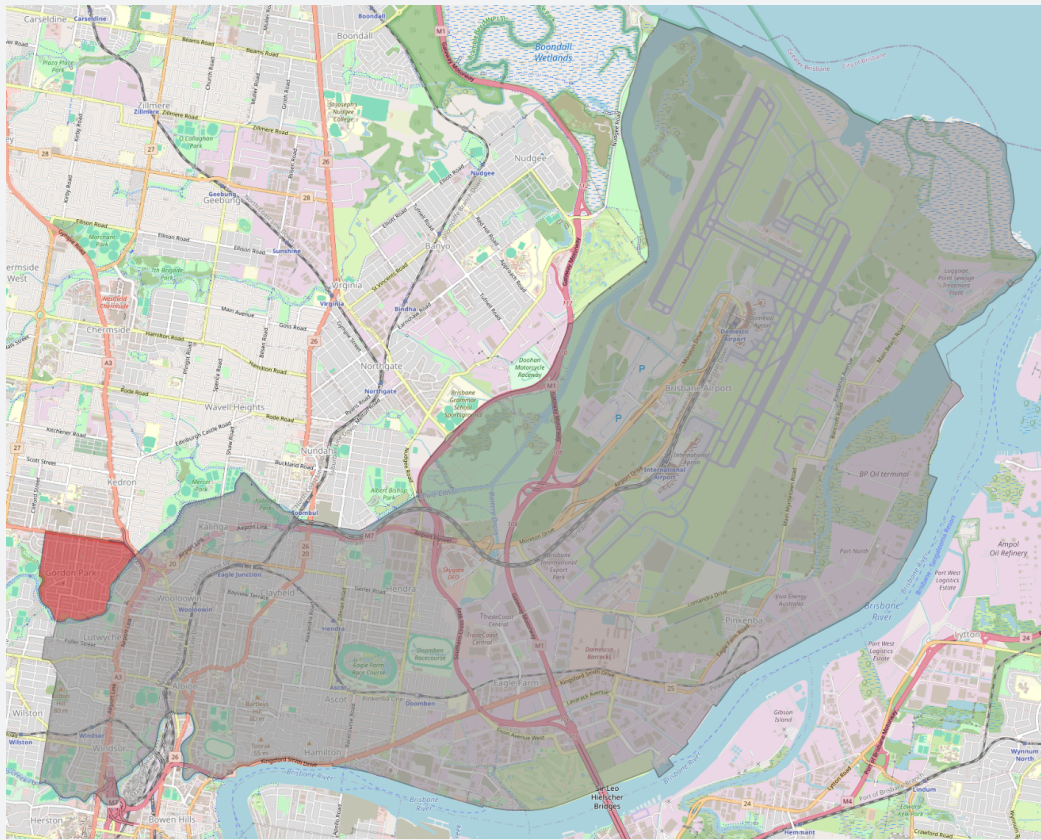
Boundaries	2025 Enrolment		2032 Enrolment	
Current	38,869	-3.46%	40,957	-8.83%
Proposed	40,785	1.29%	43,864	-1.83%
Loses	Remainder of Auchenflower and parts of Milton, Paddington, and Bardon to Maiwar (addressed in Maiwar proposal). All of Newmarket currently in Cooper to Ferny Grove .			
Gains	Petrie Terrace, Herston, and the remainder of Kelvin Grove from McConnel (addressed in McConnel proposal).			
Rationale	Rationale for loss to Maiwar and gain from McConnel addressed in respective district's proposals. Part of Newmarket currently in Cooper is physically disconnected from rest of district by Enoggera Creek. Combined with further changes covered in Ferny Grove proposal this consolidates Newmarket SA2 within a single district, and aligns Cooper's northern boundary with Enoggera Creek from Enoggera Hill to Lutwyche Rd.			

Ferny Grove



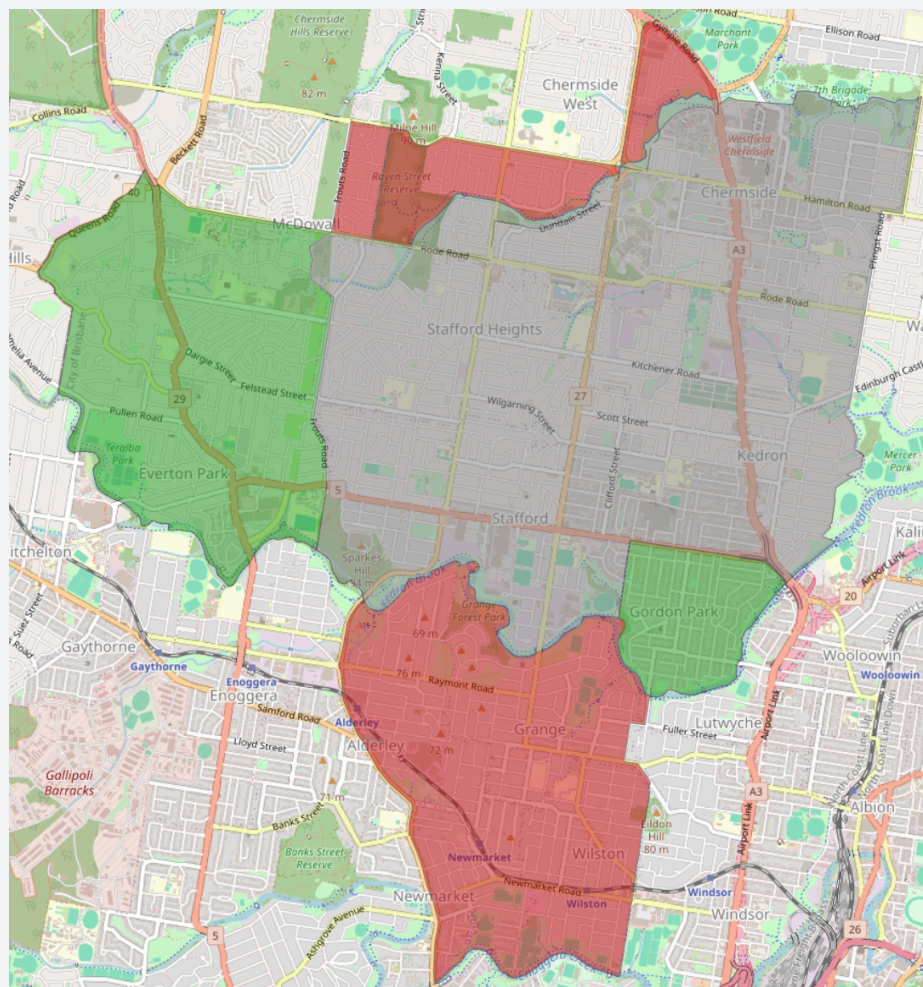
Boundaries	2025 Enrolment		2032 Enrolment	
Current	38,463	-4.47%	39,651	-11.25%
Proposed	44,098	9.52%	45,975	2.90%
Loses	Areas in Moreton Bay City Council to Bunyaville (Everton) .			
Gains	Parts of Bunyaville (Everton) and Stafford south of Kedron Brook. Remainder of Newmarket from Cooper .			
Rationale	<p>Loss of area in MBCC confines district to BCC boundaries as council serves a significant COI for residents. Gains from Bunyaville (Everton) part of similarly confining it to MBCC.</p> <p>Gained area from Stafford allows for Ferny Grove's northern boundary to follow Kedron Brook for the entire length from Wahminda Park to Gilbert Rd. Establishes Ferny Grove as primarily defined along the Ferny Grove railway line (existing name can be retained, though alternative names could be considered to avoid confusion for Ferny Hills residents).</p>			

Clayfield



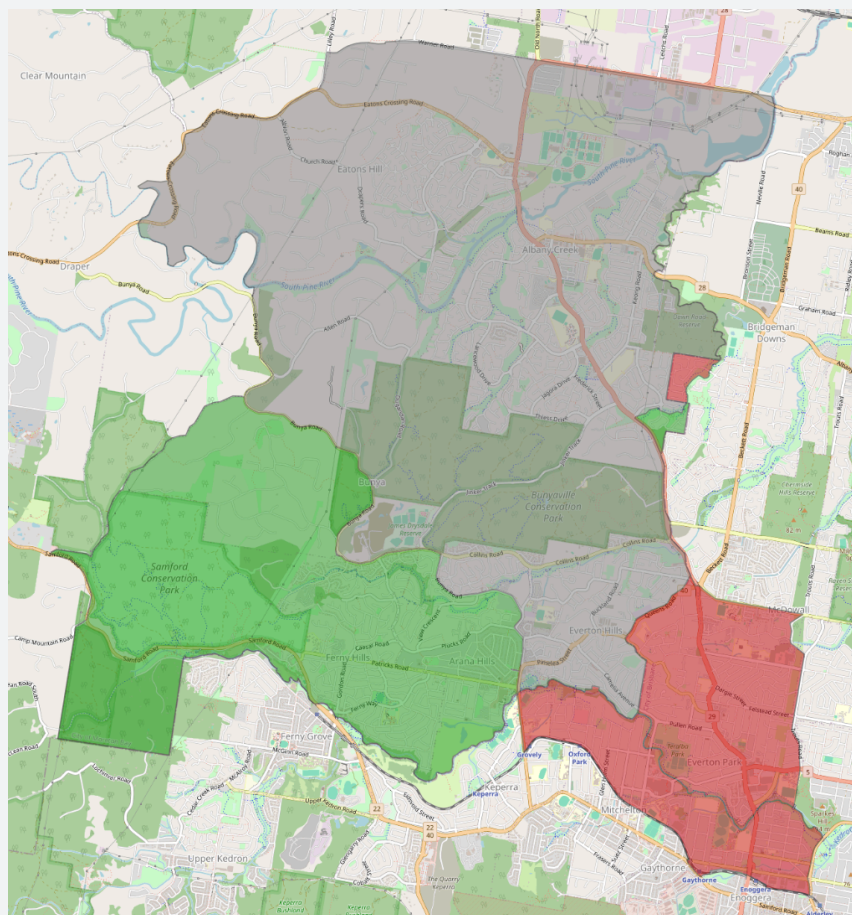
Boundaries	2025 Enrolment		2032 Enrolment	
Current	43,069	6.97%	48,711	9.02%
Proposed	39,760	-1.25%	45,241	1.26%
Loses	Gordon Park to Stafford .			
Gains	-			
Rationale	<p>Reduction recommended due to expected growth rising enrolment close to over quota. Gordon Park physically separate from rest of district by Kedron Brook, and the current Stafford/Clayfield boundary runs directly between adjacent houses.</p> <p>Confines Clayfield south of Kedron Brook, and part of shifting Stafford north of Kedron Brook.</p>			

Stafford



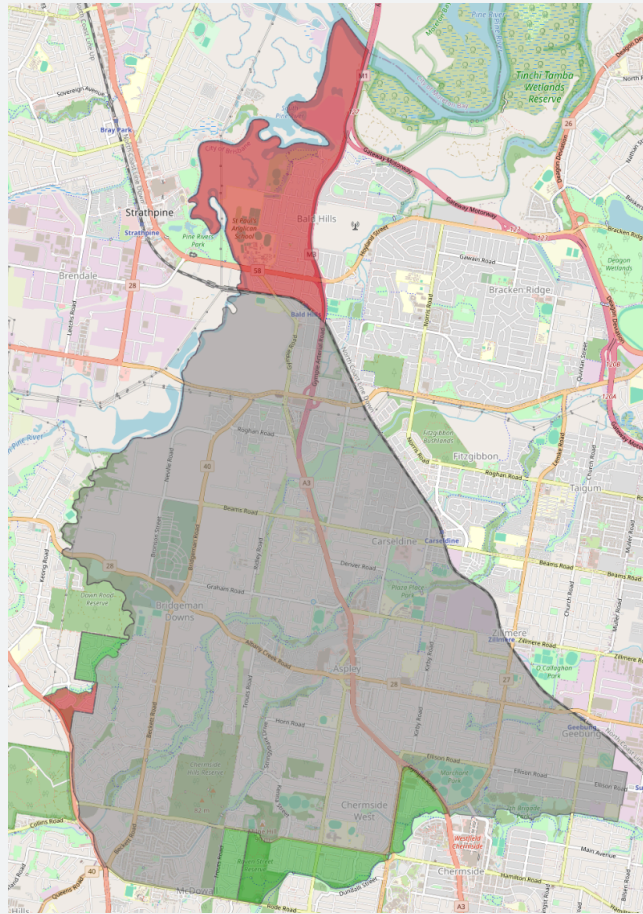
Boundaries	2025 Enrolment		2032 Enrolment	
Current	41,234	2.41%	43,601	-2.41%
Proposed	39,644	-1.54%	42,033	-5.92%
Loses	Area south of Kedron Brook to Ferny Grove . Areas north of Rode Rd/Downfall Creek to Aspley .			
Gains	Part of Bunyaville (Everton) within BCC and north of Kedron Brook. Gordon Park from Clayfield .			
Rationale	Loss to Ferny Grove and gain from Clayfield addressed in respective district proposals. Gains from Bunyaville (Everton) part of shifting it outside of BCC/confining it to MBCC. Loss to Aspley aligns Stafford's northern boundary with Downfall Creek (natural boundary) for much of its length, rather than the current zig-zag along N-S and E-W roads.			

Bunyaville (formerly Everton)



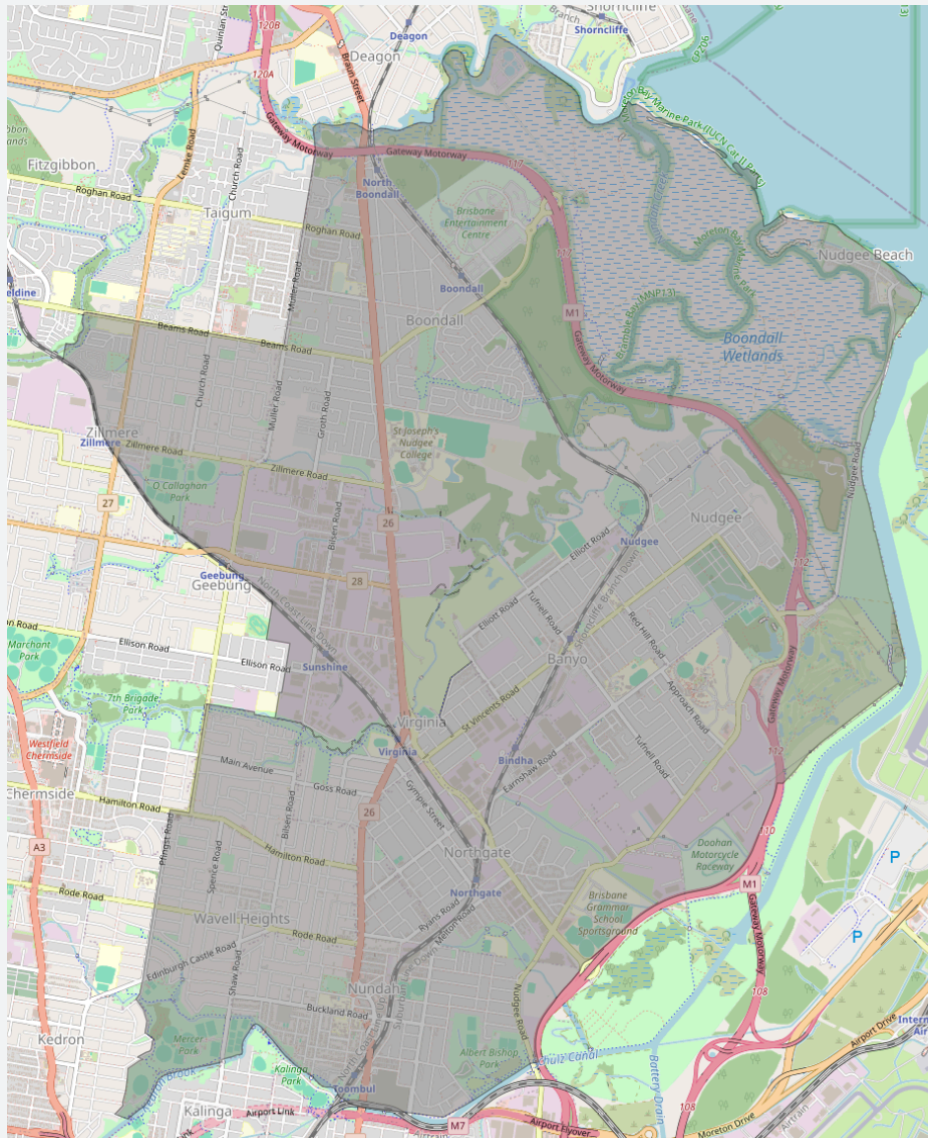
Boundaries	2025 Enrolment		2032 Enrolment	
Current	40,426	0.40%	42,644	-4.55%
Proposed	37,641	-6.51%	39,177	-12.31%
Loses	Area in BCC south of Kedron Brook to Ferny Grove . Area in BCC north of Kedron Brook to Stafford . Part of Bridgeman Downs within district to Aspley .			
Gains	Ferny Hills and parts of Arana Hills and Bunya from Ferny Grove . Remainder of Albany Creek from Aspley .			
Rationale	Confines district to MBCC council boundaries. Rationale for changes involving Ferny Grove and Stafford addressed in their proposals. Areas exchanged with Aspley each are only accessed through the neighbouring district (the part of Bridgeman Downs currently in district only has road access through Aspley). Further small gain from Pine Rivers needed to return to quota (outside scope of proposal, but is needed as part of much larger changes within Moreton Bay, avoiding suggesting one specific area to not impede on other needed changes there).			

Aspley



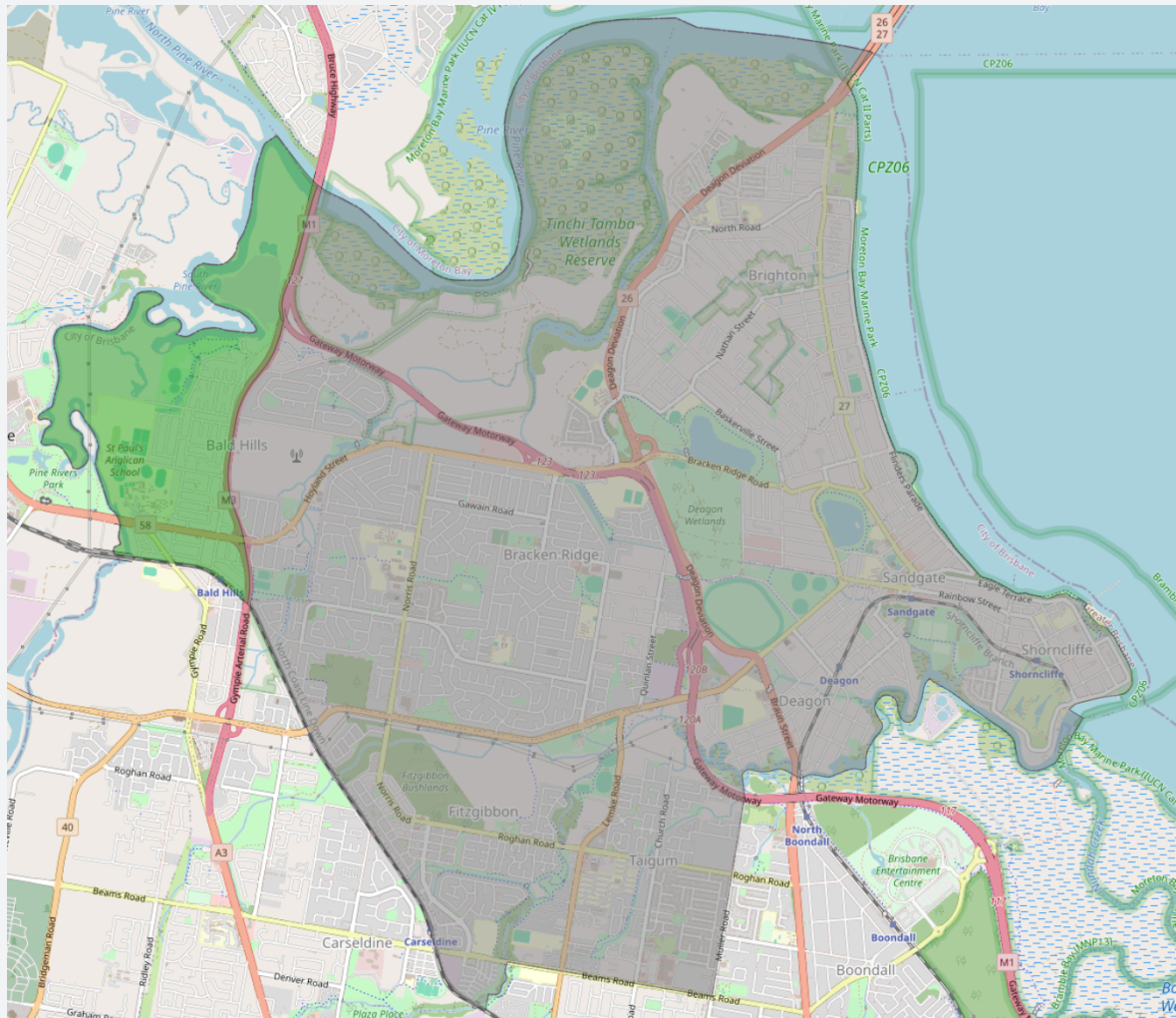
Boundaries	2025 Enrolment		2032 Enrolment	
Current	40,716	1.12%	42,017	-5.96%
Proposed	41,131	2.15%	42,572	-4.72%
Loses	Area north of railway line to Sandgate . Part of Albany Creek within district to Bunyaville (Everton) .			
Gains	Remainder of Bridgeman Downs from Bunyaville (Everton) . Areas north of Rode Rd/Downfall Creek from Stafford .			
Rationale	Changes involving Stafford and Bunyaville (Everton) addressed in respective proposals. Area lost to Sandgate needed to bring Sandgate's projected enrolment within quota. Transferred area separated by railway line; continues northern boundary along railway line up to South Pine River.			

Nudgee



Boundaries	2025 Enrolment		2032 Enrolment	
Current	40,647	0.95%	42,325	-5.27%
Proposed	40,647	0.95%	42,325	-5.27%
Loses	-			
Gains	-			
Rationale	Existing boundaries retained.			

Sandgate



Boundaries	2025 Enrolment		2032 Enrolment	
Current	39,372	-2.22%	40,138	-10.16%
Proposed	41,469	2.99%	42,270	-5.39%
Loses	-			
Gains	Part of Aspley north of railway line.			
Rationale	Addition of area needed to bring district's projected enrolment within quota. Selected part of Aspley physically separate from rest of district by railway line. Extends Sandgate's southwestern boundary along railway line up to South Pine River.			