

Submission ID: O-0547
Date Received: 6/4/26, 8:59 am
Name: Luke Robinson
Submission Topic: Electorate Boundaries
Electoral District: Algester; Broadwater; Logan; Redlands; Springwood; Woodridge; Beaudesert (formerly Scenic Rim); Beenleigh (formerly Macalister); Eight Mile Plains (formerly Toohey); Greenbank (formerly Jordan); Marsden (formerly Waterford); Oxenford (formerly Theodore); Pimpama (formerly Coomera)

Submission:

This submission is made in response to the current electoral redistribution process. The proposals outlined below are informed by projected enrolment trends and are designed to ensure compliance with statutory requirements, specifically that:

- Each electorate remains within the permissible enrolment quota,
- Boundaries reflect communities of interest (economic, social, and regional),
- Consideration is given to means of communication and travel,
- Natural and constructed geographic features are respected, and
- Existing boundaries are maintained where practicable to minimise disruption.

A key principle underpinning this submission is that suburb integrity should be preserved wherever possible. The division of suburbs along arbitrary road boundaries frequently fragments cohesive communities, particularly where residents share established links through infrastructure, services, and cultural institutions. The proposed amendments therefore prioritise the unification of suburbs and alignment of functional communities of interest.

Rationale Summary

The proposed amendments collectively achieve the following:

- Quota Compliance:
 - o Reduce projected over-enrolment in high-growth electorates including Greenbank and Pimpama (currently forecast to significantly exceed the +10% tolerance by 2032).
 - o Increase enrolment in under-quota electorates such as Redlands and Oxenford.
 - o Maintain all affected electorates within the permissible deviation range at the projection period.
- Community of Interest Alignment:
 - o Consolidate suburbs that share common retail centres, schools, cultural institutions, and transport corridors.
 - o Distinguish between urban, suburban, and rural communities, particularly across the Logan–Scenic Rim interface.
- Communication and Travel:
 - o Align boundaries with major transport corridors including the Pacific

Motorway,

Mt Lindesay Highway, and key arterial roads.

- o Reflect established commuting patterns and service access. • Boundary

Cohesion:

- o Significantly reduce the number of split suburbs, improving representational clarity.

- o Avoid reliance on arbitrary road boundaries where these divide cohesive communities.

- Future Growth Management:

- o Balance the population from high-growth corridors (e.g. Yarrabilba, Logan Reserve, Flagstone) to ensure electorates remain within quota over time.

- o Provide a more sustainable electoral structure in rapidly developing regions.

Submission Attachments

QRC - Draft Map Commentary and Adjustments.pdf

Submission to the Queensland Redistribution Commission

This submission is made in response to the current electoral redistribution process. The proposals outlined below are informed by projected enrolment trends and are designed to ensure compliance with statutory requirements, specifically that:

- Each electorate remains within the permissible enrolment quota,
- Boundaries reflect communities of interest (economic, social, and regional),
- Consideration is given to means of communication and travel,
- Natural and constructed geographic features are respected, and
- Existing boundaries are maintained where practicable to minimise disruption.

A key principle underpinning this submission is that suburb integrity should be preserved wherever possible. The division of suburbs along arbitrary road boundaries frequently fragments cohesive communities, particularly where residents share established links through infrastructure, services, and cultural institutions. The proposed amendments therefore prioritise the unification of suburbs and alignment of functional communities of interest.

Rationale Summary

The proposed amendments collectively achieve the following:

- Quota Compliance:
 - Reduce projected over-enrolment in high-growth electorates including Greenbank and Pimpama (currently forecast to significantly exceed the +10% tolerance by 2032).
 - Increase enrolment in under-quota electorates such as Redlands and Oxenford.
 - Maintain all affected electorates within the permissible deviation range at the projection period.
- Community of Interest Alignment:
 - Consolidate suburbs that share common retail centres, schools, cultural institutions, and transport corridors.
 - Distinguish between urban, suburban, and rural communities, particularly across the Logan–Scenic Rim interface.
- Communication and Travel:
 - Align boundaries with major transport corridors including the Pacific Motorway, Mt Lindesay Highway, and key arterial roads.
 - Reflect established commuting patterns and service access.

- **Boundary Cohesion:**
 - Significantly reduce the number of split suburbs, improving representational clarity.
 - Avoid reliance on arbitrary road boundaries where these divide cohesive communities.
- **Future Growth Management:**
 - Balance the population from high-growth corridors (e.g. Yarrabilba, Logan Reserve, Flagstone) to ensure electorates remain within quota over time.
 - Provide a more sustainable electoral structure in rapidly developing regions.

Proposed Algester Electorate Changes

- **Transfer Coopers Plains to Eight Mile Plains electorate**
 1. Coopers Plains is more closely aligned with Sunnybank, Robertson, and Runcorn through shared commercial centres, cultural institutions, and transport corridors.
 2. The area forms part of a cohesive urban community centred on the Mains Road and Pacific Motorway corridor.
- **Include Forestdale and Hillcrest from Greenbank**
 1. These suburbs are functionally integrated with Algester through shared schooling, local services, and transport links.
 2. This adjustment assists in returning Greenbank to within the permissible enrolment quota.

Rationale:

- Strengthens community of interest alignment across southern Brisbane suburbs.
- Supports enrolment balance between adjacent electorates.
- Reduces reliance on arbitrary boundary divisions.

Proposed Beenleigh Electorate Changes

- **Transfer Ormeau Hills to Oxenford**
 1. Ormeau Hills aligns with northern Gold Coast communities in terms of service access, schooling, and commuting patterns.
 2. The transfer contributes to improved quota outcomes for Oxenford.

- Include Waterford from Logan
 1. Waterford shares established socio-economic and service connections with Beenleigh, including retail, education, and transport links.
 2. This balances population following the removal of Ormeau Hills and offsets growth pressures within Logan.

Rationale:

- Aligns electors with primary service centres and transport networks.
- Assists in redistributing population from high-growth electorates.
- Accounts for future growth in the Logan corridor, including Yarrabilba and Logan Reserve.

Proposed Greenbank Electorate Changes

- Transfer Undullah, Flinders Lakes, and part of Kagaru to Beaudesert
 1. These rural localities share geographic, economic, and lifestyle characteristics with Scenic Rim communities.
 2. The transfer assists Beaudesert in approaching enrolment quota.
- Transfer Forestdale and Hillcrest to Algester, and Boronia Heights to Marsden
 1. These suburbs are more closely aligned with adjacent urban electorates through infrastructure, demographics, and service usage.
 2. The adjustment reduces fragmentation and assists in returning Greenbank to quota.
- Include Munruben and North Maclean from Logan
 1. These suburbs are currently divided; unification improves representational clarity.
 2. The change redistributes population growth pressures from Logan.

Rationale:

- Distinguishes rural hinterland communities from suburban growth areas.
- Returns Greenbank to within acceptable enrolment limits.
- Improves boundary cohesion by unifying split suburbs.

Proposed Logan Electorate Changes

- Include remainder of Park Ridge from Marsden

1. Unifies the suburb within a single electorate, reflecting shared infrastructure and community identity.
- Transfer Munruben and North Maclean to Greenbank
 1. Reflects their alignment with semi-rural and growth corridor communities rather than urban Logan.
 - Transfer Waterford to Beenleigh
 1. Aligns the suburb with its primary service centres and assists in balancing enrolment.
 - Transfer Waterford West to Woodridge
 1. Unifies the suburb and reflects strong socio-economic and transport links with Woodridge.

Rationale:

- Reduces projected over-enrolment in Logan.
- Clarifies the distinction between urban and semi-rural communities.
- Eliminates unnecessary subdivision of suburbs.

Proposed Marsden Electorate Changes

- Transfer part of Park Ridge to Logan
 1. Ensures the suburb is represented within a single electorate.
- Include Boronia Heights from Greenbank
 1. Aligns with Marsden through shared infrastructure, schooling, and demographic characteristics.
 2. Offsets population changes resulting from the transfer of Park Ridge.

Rationale:

- Maintains enrolment balance.
- Strengthens suburban community cohesion.
- Reduces fragmentation of established localities.

Proposed Oxenford Electorate Changes

- Include Ormeau Hills from Beenleigh
 1. Reflects strong connections to northern Gold Coast communities and transport corridors.

Rationale:

- Aligns electors with coastal and hinterland service networks.
- Assists in achieving enrolment balance.

Proposed Pimpama Electorate Changes

- Transfer Stapylton and Alberton to Redlands
 1. These areas align with Redlands in terms of geography and emerging development patterns.
 2. The change assists Redlands in achieving quota.
- Transfer southern Coomera (below Foxwell Road) to Broadwater
 1. Reflects geographic separation and development patterns within Coomera.
 2. Supports quota balance across northern Gold Coast electorates.

Rationale:

- Addresses enrolment imbalances in high-growth regions.
- Utilises recognisable geographic boundaries.
- Acknowledges ongoing and future development in Coomera and Norwell.

Proposed Redlands Electorate Changes

- Transfer Daisy Hill Conservation Park and surrounding areas to Springwood
 1. Aligns the conservation area with the adjoining Daisy Hill locality.
- Include Stapylton and Alberton from Pimpama
 1. Balances enrolment and reflects emerging community connections.

Rationale:

- Maintains geographic cohesion of natural features.
- Supports electoral quota requirements.

Proposed Springwood Electorate Changes

- Include Daisy Hill Conservation Park and surrounding areas

Rationale:

- Aligns environmental and residential communities within a single electorate.
- Maintains logical and continuous boundaries.

Proposed Woodridge Electorate Changes

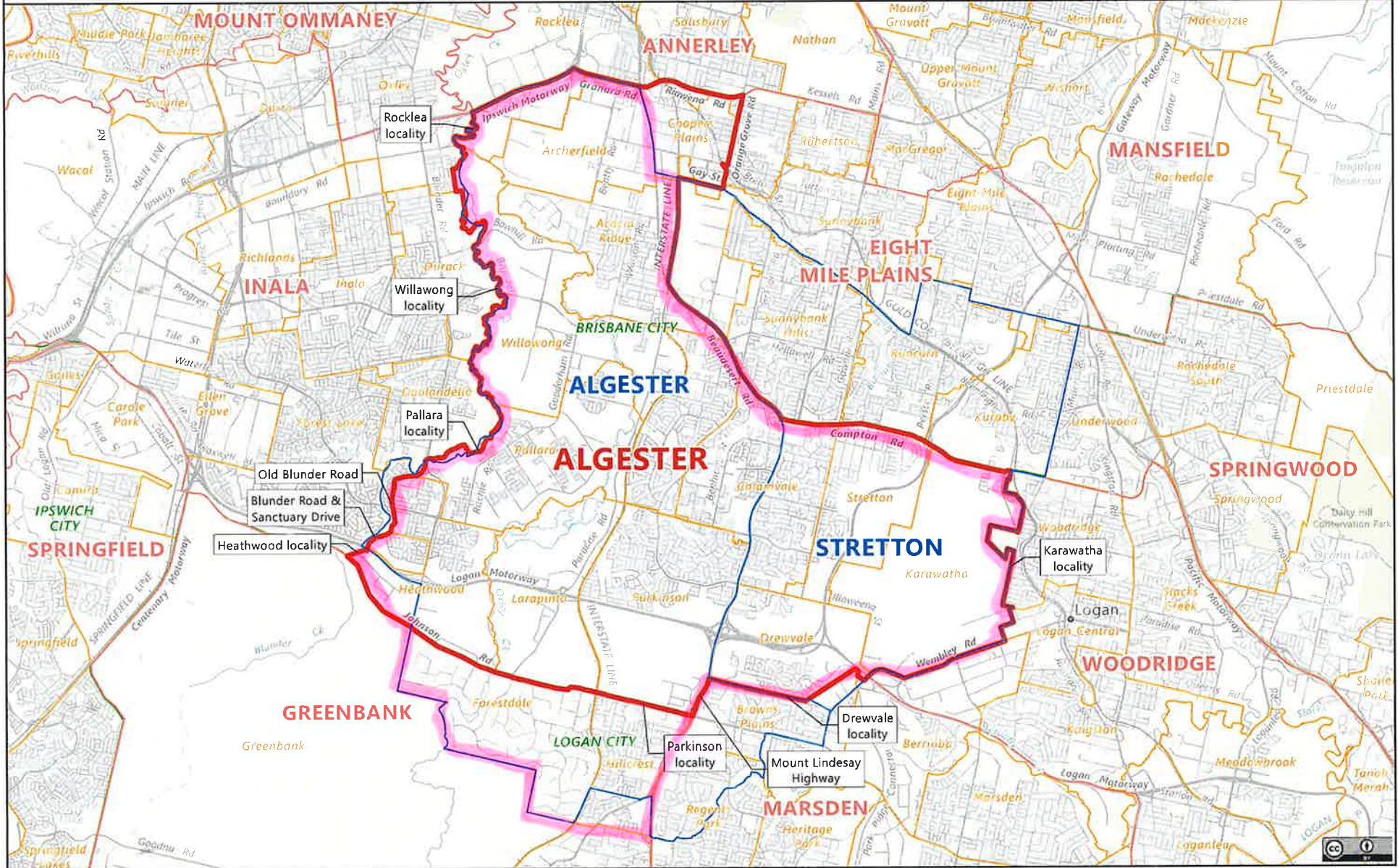
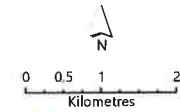
- Include Waterford West from Logan
 1. Unifies the suburb within a single electorate.
 2. Reflects strong socio-economic and transport connections with Woodridge.

Rationale:

- Enhances community cohesion within an urban electorate.
- Eliminates fragmentation and improves representational clarity.

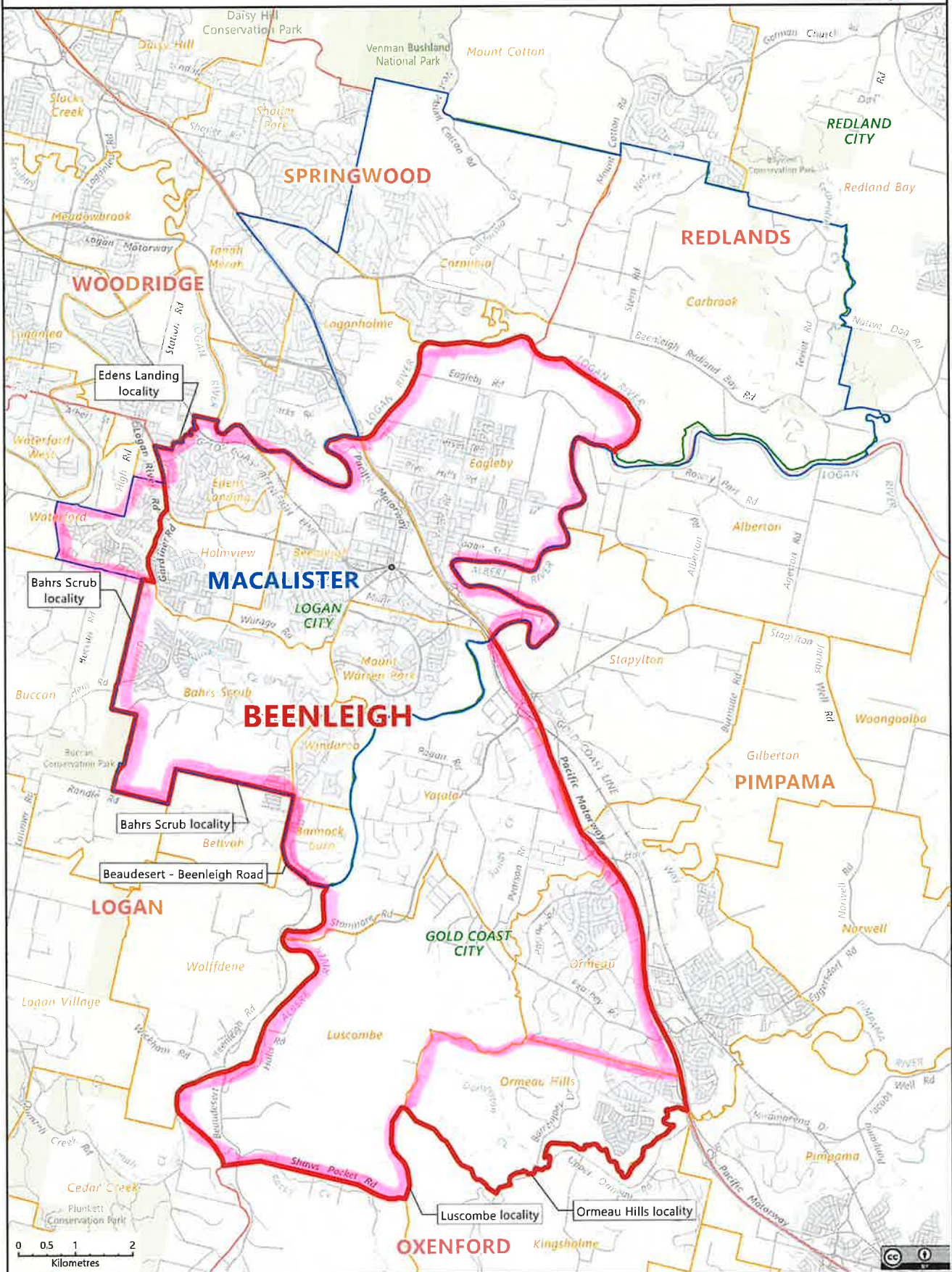
ALGESTER

- Proposed state electoral district
- Current state electoral district
- Local government area (LGA)
- Locality



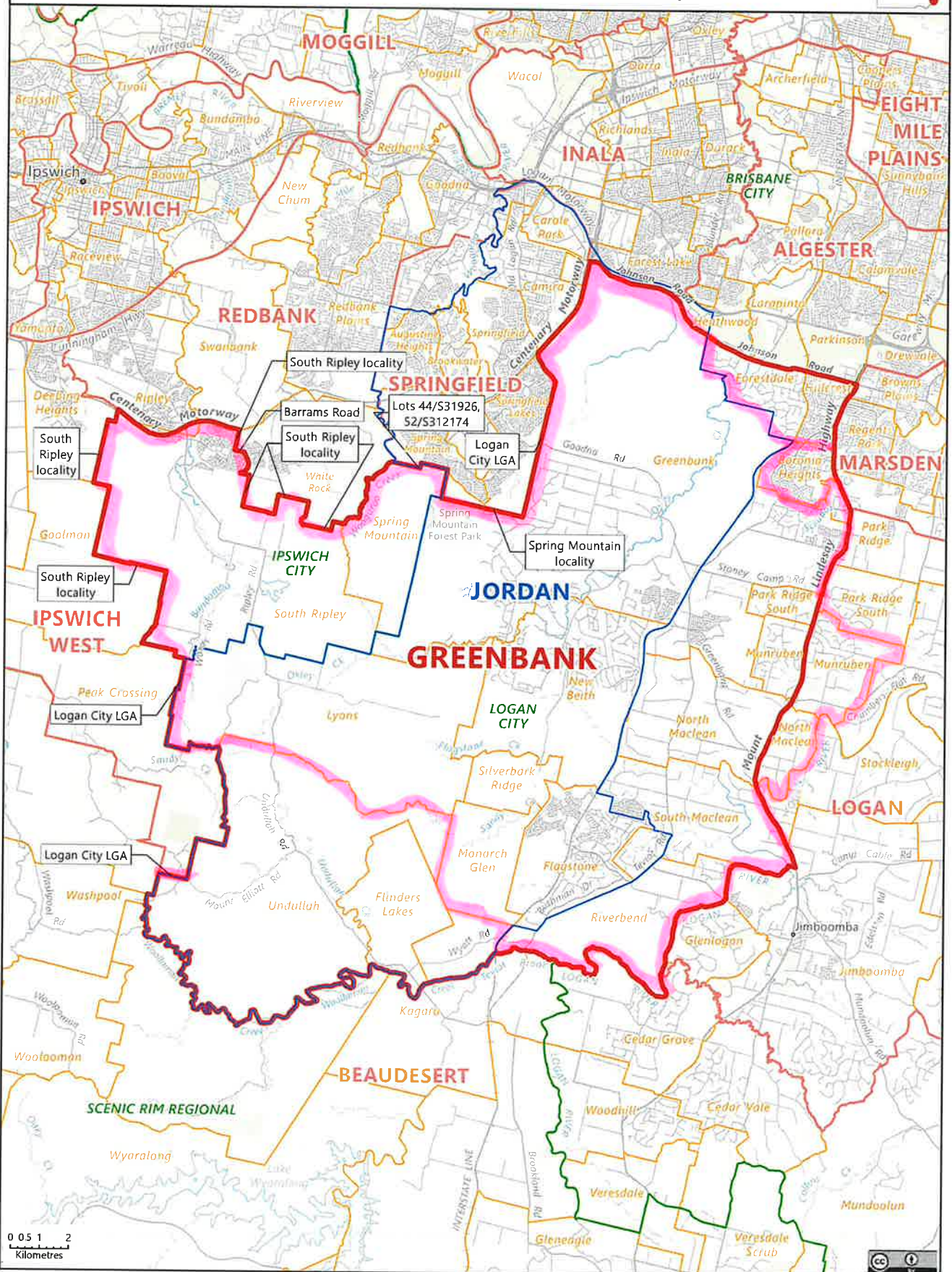
BEENLEIGH

- Proposed state electoral district
- Current state electoral district
- Local government area (LGA)
- Locality



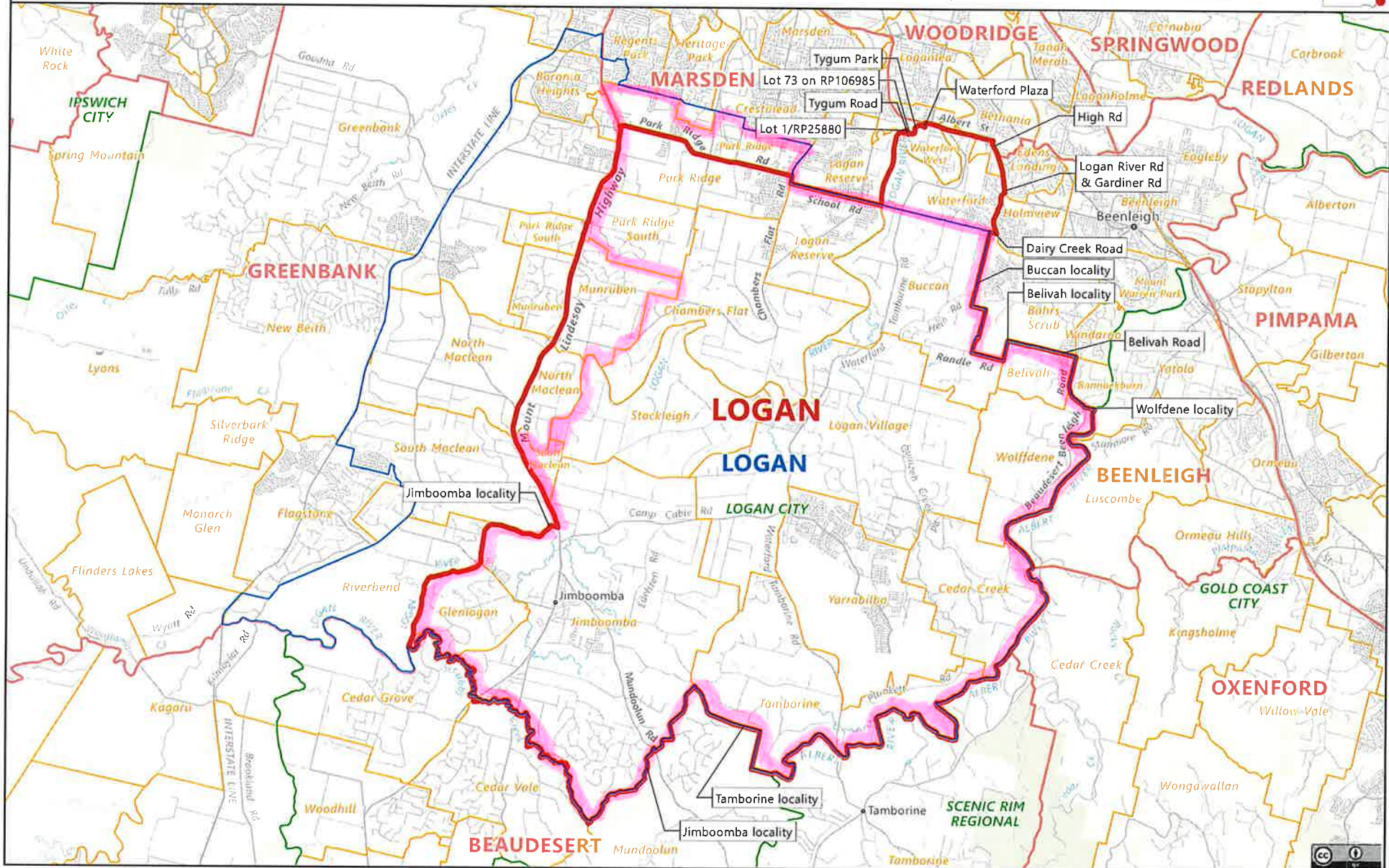
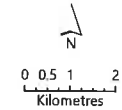
GREENBANK

- Proposed state electoral district
- Current state electoral district
- Local government area (LGA)
- Locality



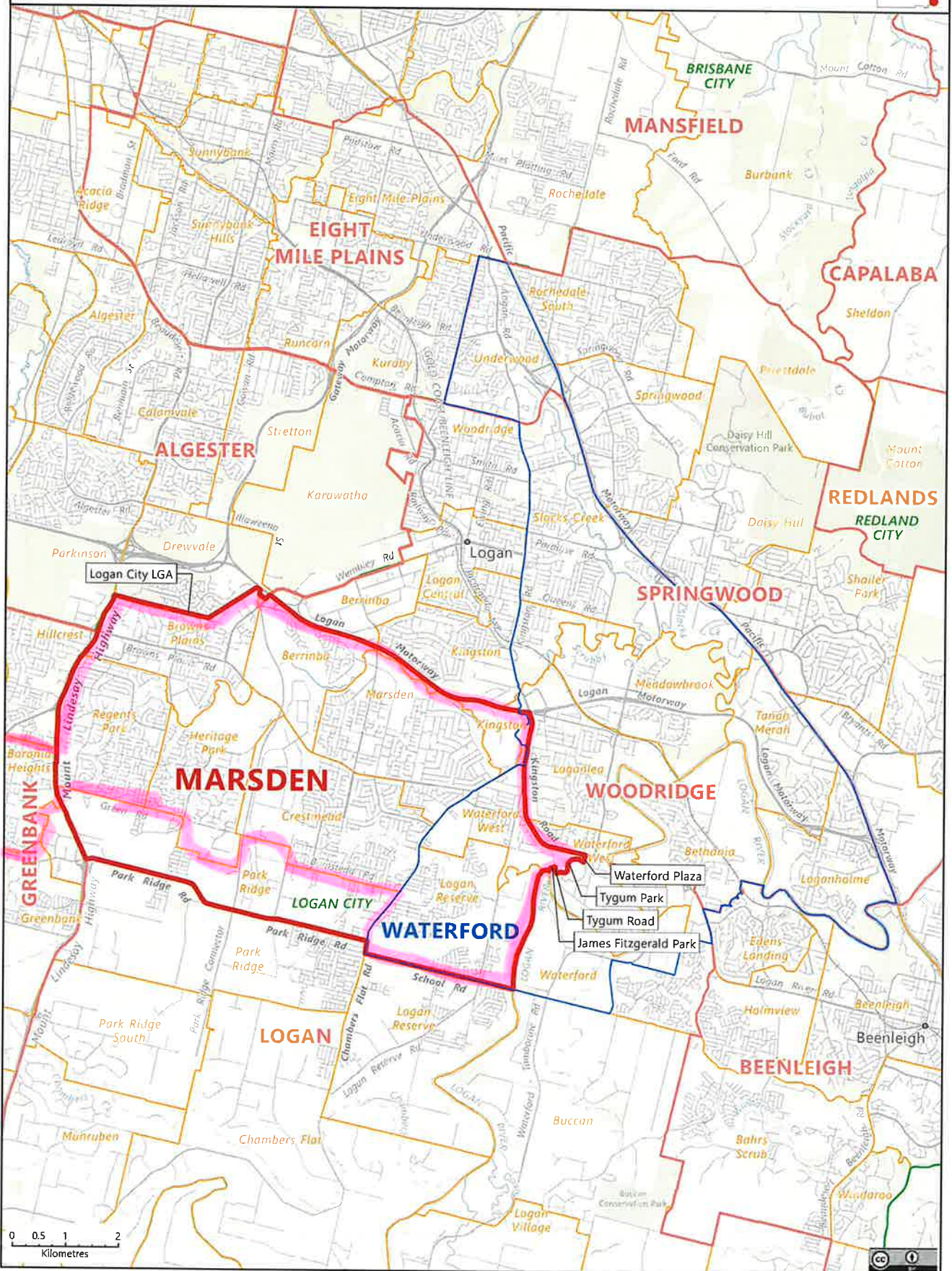
LOGAN

- Proposed state electoral district
- Current state electoral district
- Local government area (LGA)
- Locality



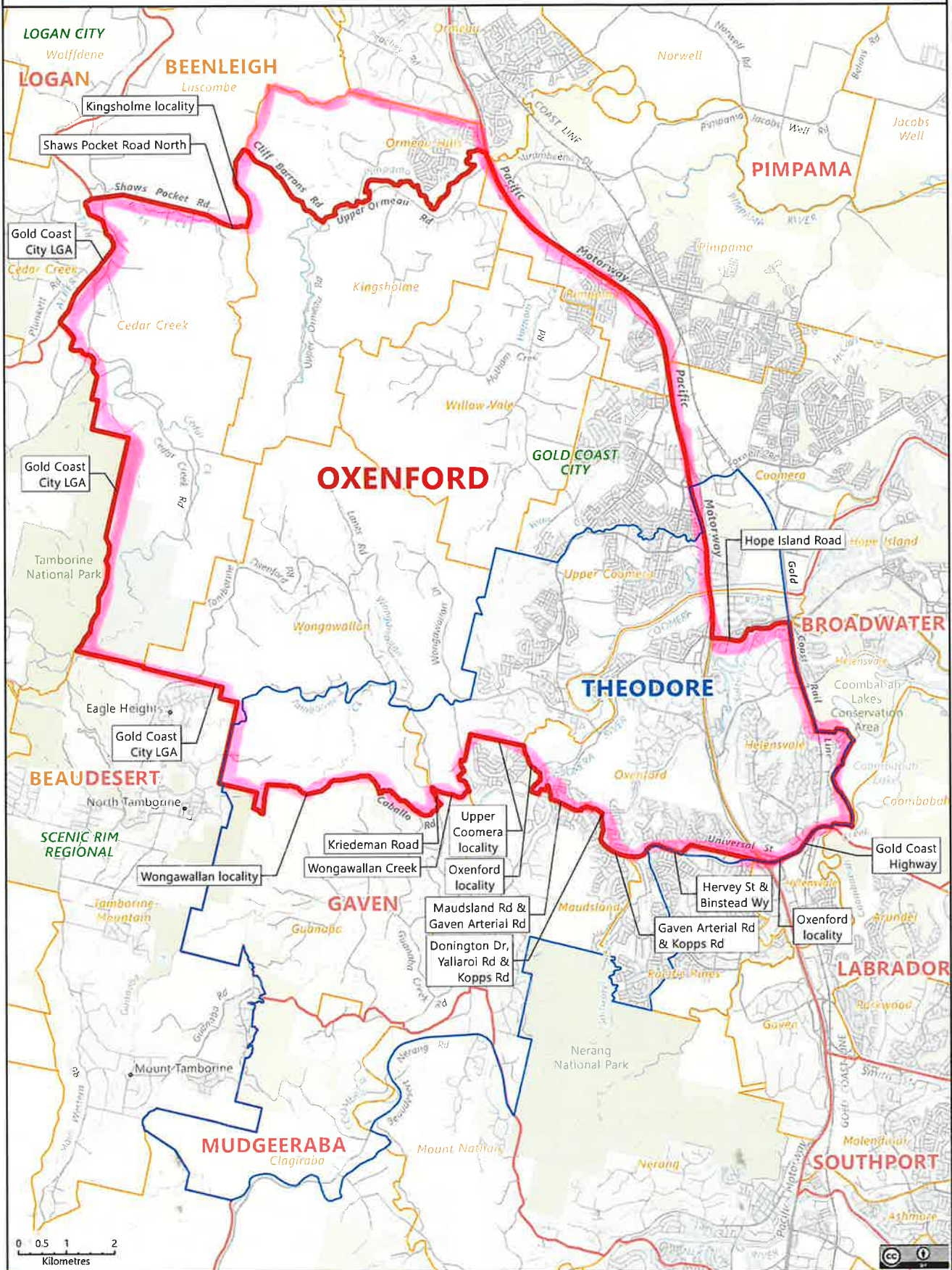
MARSDEN

- Proposed state electoral district
- Current state electoral district
- Local government area (LGA)
- Locality



OXENFORD

- Proposed state electoral district
- Current state electoral district
- Local government area (LGA)
- Locality

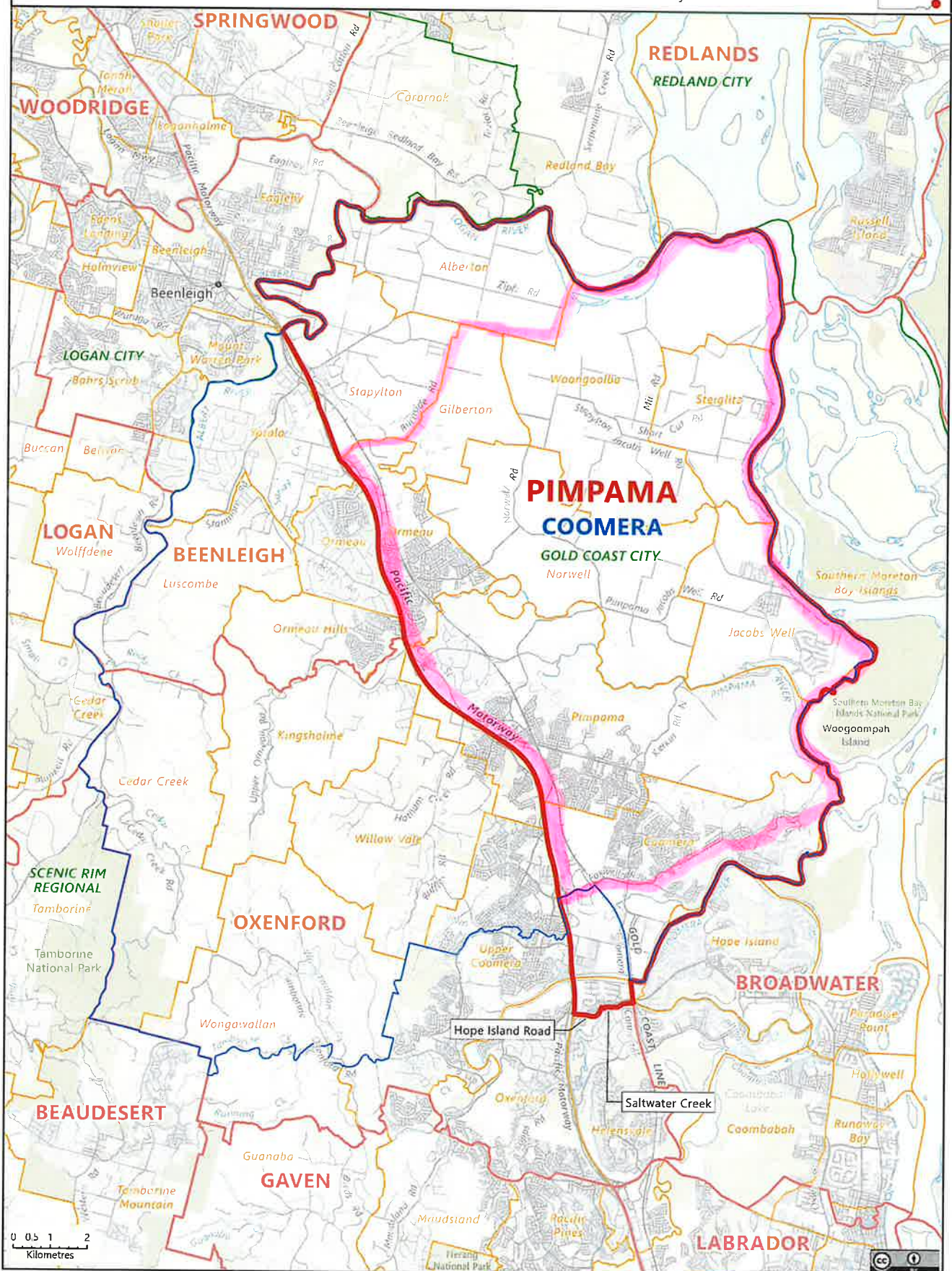


0 0.5 1 2
Kilometres



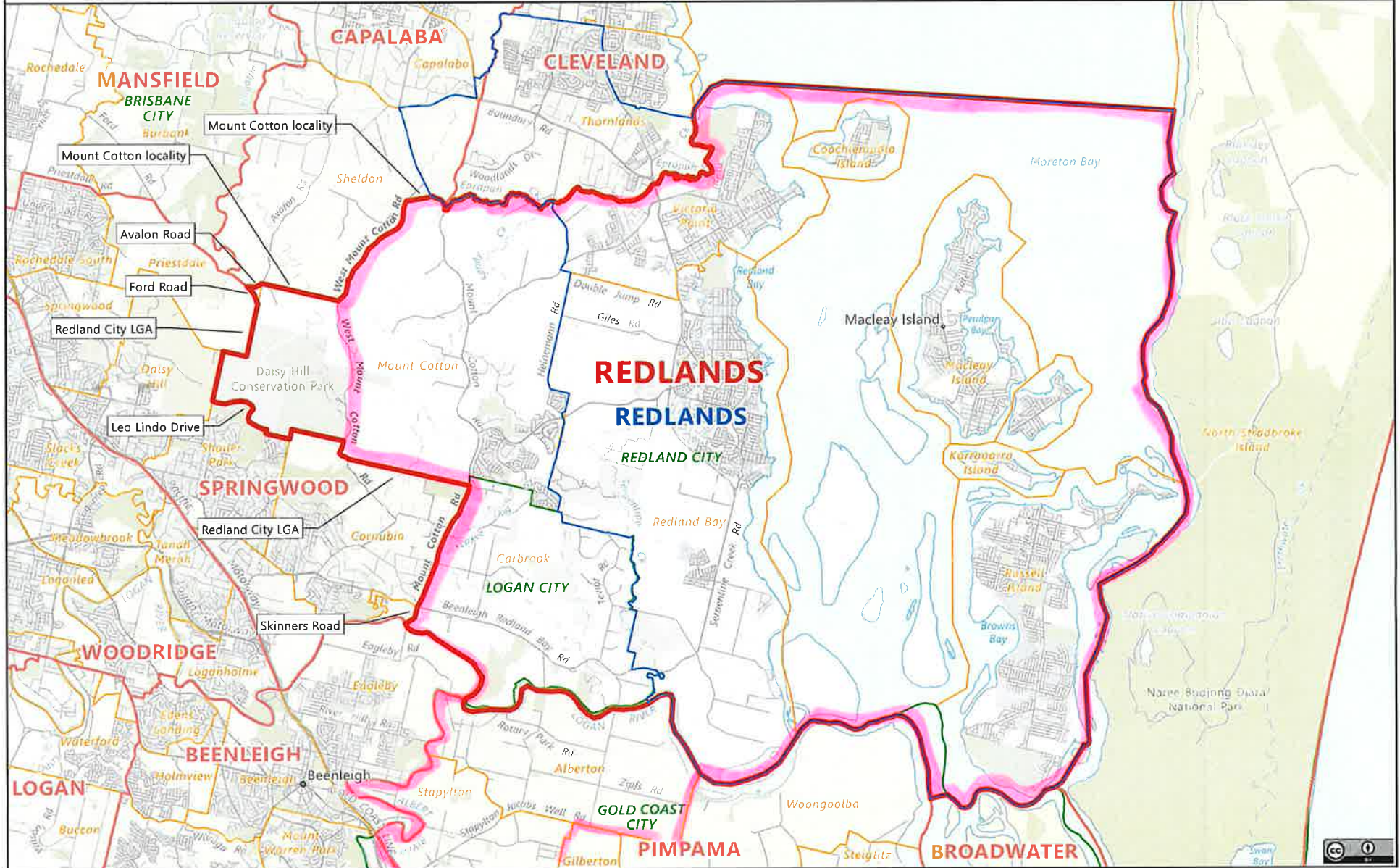
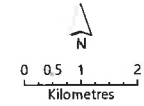
PIMPAMA

- Proposed state electoral district
- Current state electoral district
- Local government area (LGA)
- Locality



REDLANDS

- Proposed state electoral district
- Current state electoral district
- Local government area (LGA)
- Locality



WOODRIDGE

- Proposed state electoral district
- Current state electoral district
- Local government area (LGA)
- Locality

