

Submission ID: S-00089
Date Received: 5/8/25, 1:25 pm
Name: LUKE ROBINSON
Submission Topic: Electorate Boundaries and Names
Electoral District: Algester; Inala; Jordan; Logan; Miller; Scenic Rim; Stretton; Toohey; Woodridge
Multiple Signatories: No

Submission:

This submission is made to the Queensland Redistribution Commission in response to the current redistribution process under the *Electoral Act 1992 (Qld)*. The proposals presented are informed by projected enrolment data for 2032 and aim to ensure:

- Each electorate remains within the permissible enrolment quota,
- Electorates reflect communities of interest (economic, social, and regional),
- Boundaries take into account means of communication and travel,
- Natural and constructed geographic features are respected, and
- Minimal disruption to existing boundaries where practicable.

This submission proposes:

- The abolition of the Toohey electorate due to sustained and forecast enrolment decline,
- The creation of a new Jimboomba electorate in response to high growth in Logan's southern growth corridor,
- The redistribution of suburbs across the Stretton, Algester, Woodridge, Logan, and Jordan electorates, and
- Boundary changes designed to ensure electors with shared infrastructure, services, and socio-cultural identity are represented by a single Member of Parliament.

Proposed Stretton Electorate Changes:

- Transfer Calamvale, Drewvale, and the portion of Acacia Ridge currently within Stretton to Algester
 - These areas are functionally aligned with the Algester community through shared use of shopping centres (e.g. Calamvale Central), education catchments, and public transport links (Beaudesert Rd corridor).
 - This shift enhances community representation and balances population between electorates.
- Transfer Kuraby and Karawatha to Woodridge
 - These suburbs share places of worship, cultural centres, and retail precincts with Woodridge.
 - They form a natural cultural and socio-economic extension of the broader Logan community and would be better represented under Woodridge.
- Incorporate suburbs currently within the Toohey electorate into Stretton
 - Suburbs include: Salisbury, Nathan, Coopers Plains, Robertson, Sunnybank, Macgregor, Eight Mile Plains, and Runcorn.

- These are highly interconnected, urbanised communities with shared health infrastructure (QEII, Sunnybank Private), major arterial roads (Pacific Motorway, Mains Rd), and commercial precincts.
- They form a distinct multicultural urban hub with strong economic and transport integration.

Rationale:

- Population Quota: Stretton and Toohey are both forecast to fall well below quota by 2032. This redistribution brings Stretton back within quota.
- Community of Interest: The changes strengthen representation for multicultural, densely populated urban communities.
- Existing Boundaries: The removal of Toohey necessitates a logical redistribution of its areas into neighbouring electorates.
- Transport & Communication: Shared bus and train routes, arterial roads, and health/education precincts link the proposed suburbs.

Proposed Algester Electorate Changes

- Transfer portion of Forest Lake (currently in Algester) to Inala
 - Forest Lake shares infrastructure, community services, and identity with Inala.
 - Realignment will unify this community of interest.
- Include Calamvale, Drewvale, and part of Acacia Ridge from Stretton
 - These suburbs form a well-integrated community with Algester through shared schools, shopping centres, and transport infrastructure.
 - This adjustment reflects daily travel, service, and social patterns.
- Transfer parts of Hillcrest, Regents Park, and Browns Plains to Logan
 - These suburbs are currently fragmented across multiple electorates despite sharing infrastructure and demographics.
 - Realignment under Logan will improve representational cohesion.
- Transfer portion of Heathwood (currently in Jordan) into Algester
 - Heathwood is a small suburb currently divided; unifying it under Algester improves community representation.

Rationale:

- Population Quota: These changes ensure Algester remains within quota while addressing urban population growth.
- Community of Interest: Suburbs share cultural, social, and transport links.
- Communication & Travel: Boundary changes reflect logical commuting routes (e.g. Beaudesert Rd, Logan Motorway).
- Existing Boundaries: Consolidates fragmented suburbs to align with current service areas.

Proposed Woodridge Electorate Changes

- Transfer parts of Regents Park and Browns Plains to Logan
 - These suburbs are split between three electorates despite having consistent demographics, infrastructure, and services.
 - Realignment into Logan ensures unified representation.
- Include Kuraby and Karawatha from Stretton

- These communities are socio-culturally and functionally aligned with the Woodridge electorate, particularly through shared cultural centres, places of worship, and public transport connections.

Rationale:

- Community of Interest: Enhances cultural, linguistic, and religious representation in a cohesive electorate.
- Quota Compliance: Adjustments support numerical balance by redistributing population equitably.
- Transport & Services: Areas are well connected to Logan Rd and regional public transport services centred in Woodridge.

Proposed Logan Electorate Changes

- Transfer Cedar Creek, Wolffdene, Belivah, Kairabah, and Tamborine to Scenic Rim
 - These are rural or semi-rural communities with topographic and demographic similarity to Scenic Rim.
 - They share lifestyle patterns, infrastructure, and service usage with rural hinterland communities.
- Remove Jimboomba, Glenlogan, South Maclean, North Maclean, Stockleigh, Munruben, and Riverbend
 - These fast-growing residential areas would form the basis of a new Jimboomba electorate.
 - This proposal responds to population growth and ensures serviceable representation for the Flagstone development corridor.
- Transfer Logan Reserve (partial) to Waterford
 - The suburb is currently divided; unifying it under Waterford will enhance service alignment and representation.
- Transfer Greenbank (partial) to Jordan
 - Greenbank is split across electorates; this change unifies the suburb, improving representation and reducing confusion.
- Include Hillcrest, Regents Park, and Browns Plains (from Woodridge and Algester)
 - These suburbs are socio-economically and geographically aligned and better represented under one MP.

Rationale:

- Population Quota: Logan is forecast to exceed quota by 50% by 2032. Redistribution is essential.
- Community of Interest: Adjustments reflect shared urban growth characteristics.
- Geographic Features: Suburban vs rural separation addressed by moving rural areas to Scenic Rim.
- Future Growth: Reducing Logan's scope future-proofs it for high-density development areas (Yarrabilba PDA, etc.).

Proposed Jordan Electorate Changes:

- Transfer Undullah, Flinders Lakes, Kagaru, Monarch Glen, Silverbark Ridge, and Lyons to Scenic Rim
 - These low-density rural communities align demographically and geographically with the Scenic Rim region.

- Transfer Flagstone, South Maclean, and New Beith to a new Jimboomba electorate
 - These fast-growing communities are demographically and economically aligned and require dedicated representation due to the scale of current and forecasted development.
- Unify Greenbank under Jordan (from Logan)
 - Greenbank is currently split; unification supports service delivery and cohesive representation.
- Transfer Heathwood (from Jordan) into Algester
 - Unifying Heathwood, currently split, will improve representational clarity.
- Transfer South Ripley (from Bundamba) to Jordan
 - South Ripley's connections with Springfield, Greenbank, and Flagstone justify this shift. It shares more infrastructure and planning alignment with the Jordan electorate than the Ipswich LGA areas currently in Bundamba.

Rationale:

- Quota Management: Jordan is projected to exceed quota by ~47% by 2032. Redistribution is necessary.
- Community of Interest: Adjustments reflect both rural and growth corridor dynamics.
- Transport & Travel: Changes match daily commuting and infrastructure usage patterns.
- Geographic Area: Rural vs growth corridor representation is clarified through redistribution.

Proposed New Electorate: Jimboomba

Proposed Composition:

- Suburbs included: Jimboomba, Glenlogan, South Maclean, North Maclean, Stockleigh, Munruben, Riverbend, Flagstone, New Beith.

Rationale:

- Population Growth: The Greater Flagstone and Jimboomba corridor is forecast to grow rapidly, making a new electorate essential.
- Community of Interest: These areas are geographically clustered, share common infrastructure, planning zones, and demographic trends.
- Transport & Services: Linked by the Mt Lindesay Highway, these suburbs form a distinct residential and commuter community.

This submission is made to the Queensland Redistribution Commission in response to the current redistribution process under the *Electoral Act 1992 (Qld)*. The proposals presented are informed by projected enrolment data for 2032 and aim to ensure:

- Each electorate remains within the permissible enrolment quota,
- Electorates reflect communities of interest (economic, social, and regional),
- Boundaries take into account means of communication and travel,
- Natural and constructed geographic features are respected, and
- Minimal disruption to existing boundaries where practicable.

This submission proposes:

- The abolition of the Toohey electorate due to sustained and forecast enrolment decline,
- The creation of a new Jimboomba electorate in response to high growth in Logan's southern growth corridor,
- The redistribution of suburbs across the Stretton, Algester, Woodridge, Logan, and Jordan electorates, and
- Boundary changes designed to ensure electors with shared infrastructure, services, and socio-cultural identity are represented by a single Member of Parliament.

Proposed Stretton Electorate Changes:

1. Transfer Calamvale, Drewvale, and the portion of Acacia Ridge currently within Stretton to Algester
 - These areas are functionally aligned with the Algester community through shared use of shopping centres (e.g. Calamvale Central), education catchments, and public transport links (Beaudesert Rd corridor).
 - This shift enhances community representation and balances population between electorates.
2. Transfer Kuraby and Karawatha to Woodridge
 - These suburbs share places of worship, cultural centres, and retail precincts with Woodridge.
 - They form a natural cultural and socio-economic extension of the broader Logan community and would be better represented under Woodridge.
3. Incorporate suburbs currently within the Toohey electorate into Stretton

- Suburbs include: Salisbury, Nathan, Coopers Plains, Robertson, Sunnybank, Macgregor, Eight Mile Plains, and Runcorn.
- These are highly interconnected, urbanised communities with shared health infrastructure (QEII, Sunnybank Private), major arterial roads (Pacific Motorway, Mains Rd), and commercial precincts.
- They form a distinct multicultural urban hub with strong economic and transport integration.

Rationale:

- Population Quota: Stretton and Toohey are both forecast to fall well below quota by 2032. This redistribution brings Stretton back within quota.
- Community of Interest: The changes strengthen representation for multicultural, densely populated urban communities.
- Existing Boundaries: The removal of Toohey necessitates a logical redistribution of its areas into neighbouring electorates.
- Transport & Communication: Shared bus and train routes, arterial roads, and health/education precincts link the proposed suburbs.

Proposed Algester Electorate Changes

1. Transfer portion of Forest Lake (currently in Algester) to Inala
 - Forest Lake shares infrastructure, community services, and identity with Inala.
 - Realignment will unify this community of interest.
2. Include Calamvale, Drewvale, and part of Acacia Ridge from Stretton
 - These suburbs form a well-integrated community with Algester through shared schools, shopping centres, and transport infrastructure.
 - This adjustment reflects daily travel, service, and social patterns.
3. Transfer parts of Hillcrest, Regents Park, and Browns Plains to Logan
 - These suburbs are currently fragmented across multiple electorates despite sharing infrastructure and demographics.
 - Realignment under Logan will improve representational cohesion.
4. Transfer portion of Heathwood (currently in Jordan) into Algester

- Heathwood is a small suburb currently divided; unifying it under Algester improves community representation.

Rationale:

- Population Quota: These changes ensure Algester remains within quota while addressing urban population growth.
- Community of Interest: Suburbs share cultural, social, and transport links.
- Communication & Travel: Boundary changes reflect logical commuting routes (e.g. Beaudesert Rd, Logan Motorway).
- Existing Boundaries: Consolidates fragmented suburbs to align with current service areas.

Proposed Woodridge Electorate Changes

1. Transfer parts of Regents Park and Browns Plains to Logan
 - These suburbs are split between three electorates despite having consistent demographics, infrastructure, and services.
 - Realignment into Logan ensures unified representation.
2. Include Kuraby and Karawatha from Stretton
 - These communities are socio-culturally and functionally aligned with the Woodridge electorate, particularly through shared cultural centres, places of worship, and public transport connections.

Rationale:

- Community of Interest: Enhances cultural, linguistic, and religious representation in a cohesive electorate.
- Quota Compliance: Adjustments support numerical balance by redistributing population equitably.
- Transport & Services: Areas are well connected to Logan Rd and regional public transport services centred in Woodridge.

Proposed Logan Electorate Changes

1. Transfer Cedar Creek, Wolffdene, Belivah, Kairabah, and Tamborine to Scenic Rim
 - These are rural or semi-rural communities with topographic and demographic similarity to Scenic Rim.

- They share lifestyle patterns, infrastructure, and service usage with rural hinterland communities.
- 2. Remove Jimboomba, Glenlogan, South Maclean, North Maclean, Stockleigh, Munruben, and Riverbend
 - These fast-growing residential areas would form the basis of a new Jimboomba electorate.
 - This proposal responds to population growth and ensures serviceable representation for the Flagstone development corridor.
- 3. Transfer Logan Reserve (partial) to Waterford
 - The suburb is currently divided; unifying it under Waterford will enhance service alignment and representation.
- 4. Transfer Greenbank (partial) to Jordan
 - Greenbank is split across electorates; this change unifies the suburb, improving representation and reducing confusion.
- 5. Include Hillcrest, Regents Park, and Browns Plains (from Woodridge and Algester)
 - These suburbs are socio-economically and geographically aligned and better represented under one MP.

Rationale:

- Population Quota: Logan is forecast to exceed quota by 50% by 2032. Redistribution is essential.
- Community of Interest: Adjustments reflect shared urban growth characteristics.
- Geographic Features: Suburban vs rural separation addressed by moving rural areas to Scenic Rim.
- Future Growth: Reducing Logan's scope future-proofs it for high-density development areas (Yarrabilba PDA, etc.).

Proposed Jordan Electorate Changes:

1. Transfer Undullah, Flinders Lakes, Kagaru, Monarch Glen, Silverbark Ridge, and Lyons to Scenic Rim
 - These low-density rural communities align demographically and geographically with the Scenic Rim region.
2. Transfer Flagstone, South Maclean, and New Beith to a new Jimboomba electorate

- These fast-growing communities are demographically and economically aligned and require dedicated representation due to the scale of current and forecasted development.
3. Unify Greenbank under Jordan (from Logan)
 - Greenbank is currently split; unification supports service delivery and cohesive representation.
 4. Transfer Heathwood (from Jordan) into Algester
 - Unifying Heathwood, currently split, will improve representational clarity.
 5. Transfer South Ripley (from Bundamba) to Jordan
 - South Ripley's connections with Springfield, Greenbank, and Flagstone justify this shift. It shares more infrastructure and planning alignment with the Jordan electorate than the Ipswich LGA areas currently in Bundamba.

Rationale:

- Quota Management: Jordan is projected to exceed quota by ~47% by 2032. Redistribution is necessary.
- Community of Interest: Adjustments reflect both rural and growth corridor dynamics.
- Transport & Travel: Changes match daily commuting and infrastructure usage patterns.
- Geographic Area: Rural vs growth corridor representation is clarified through redistribution.

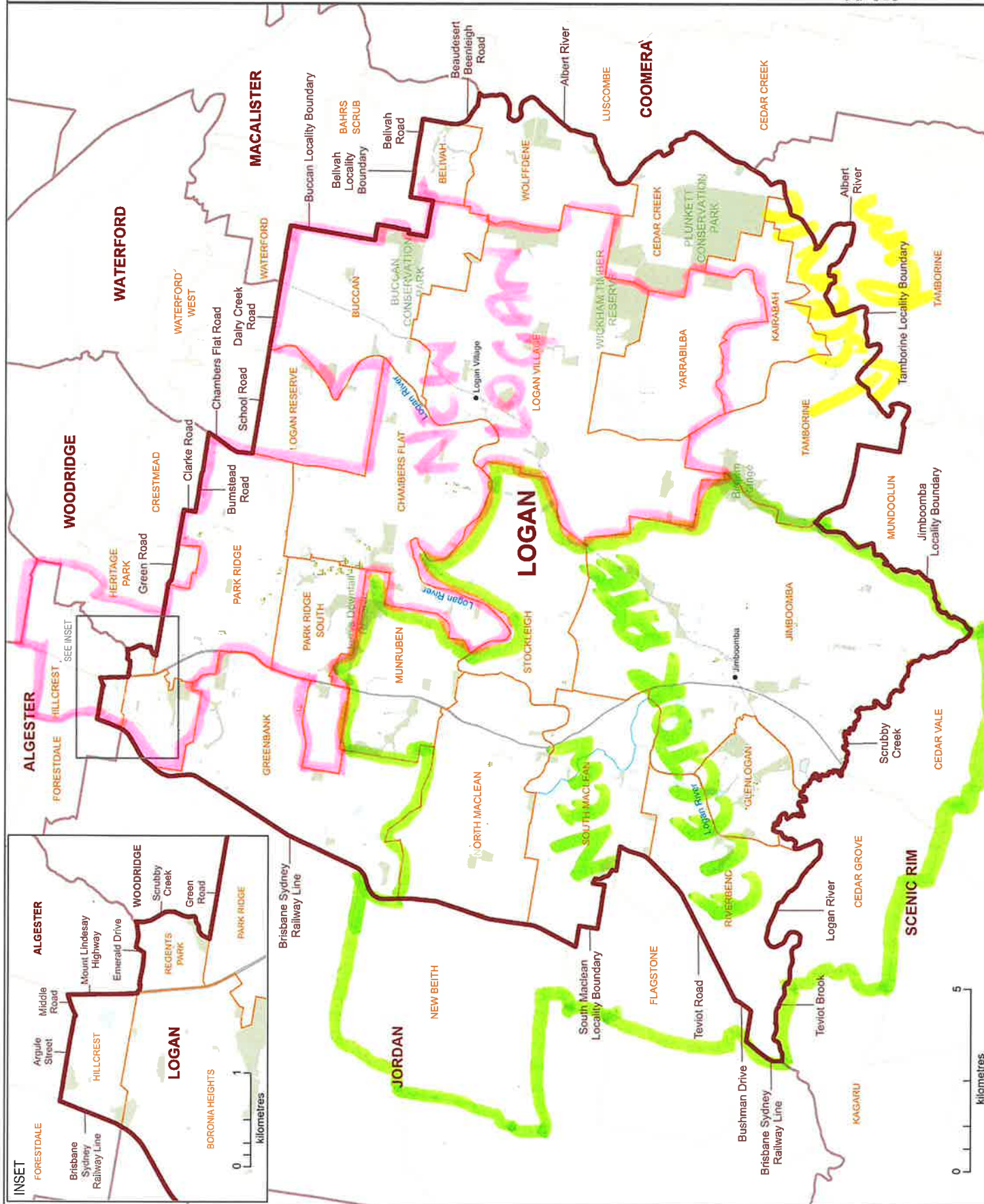
Proposed New Electorate: Jimboomba

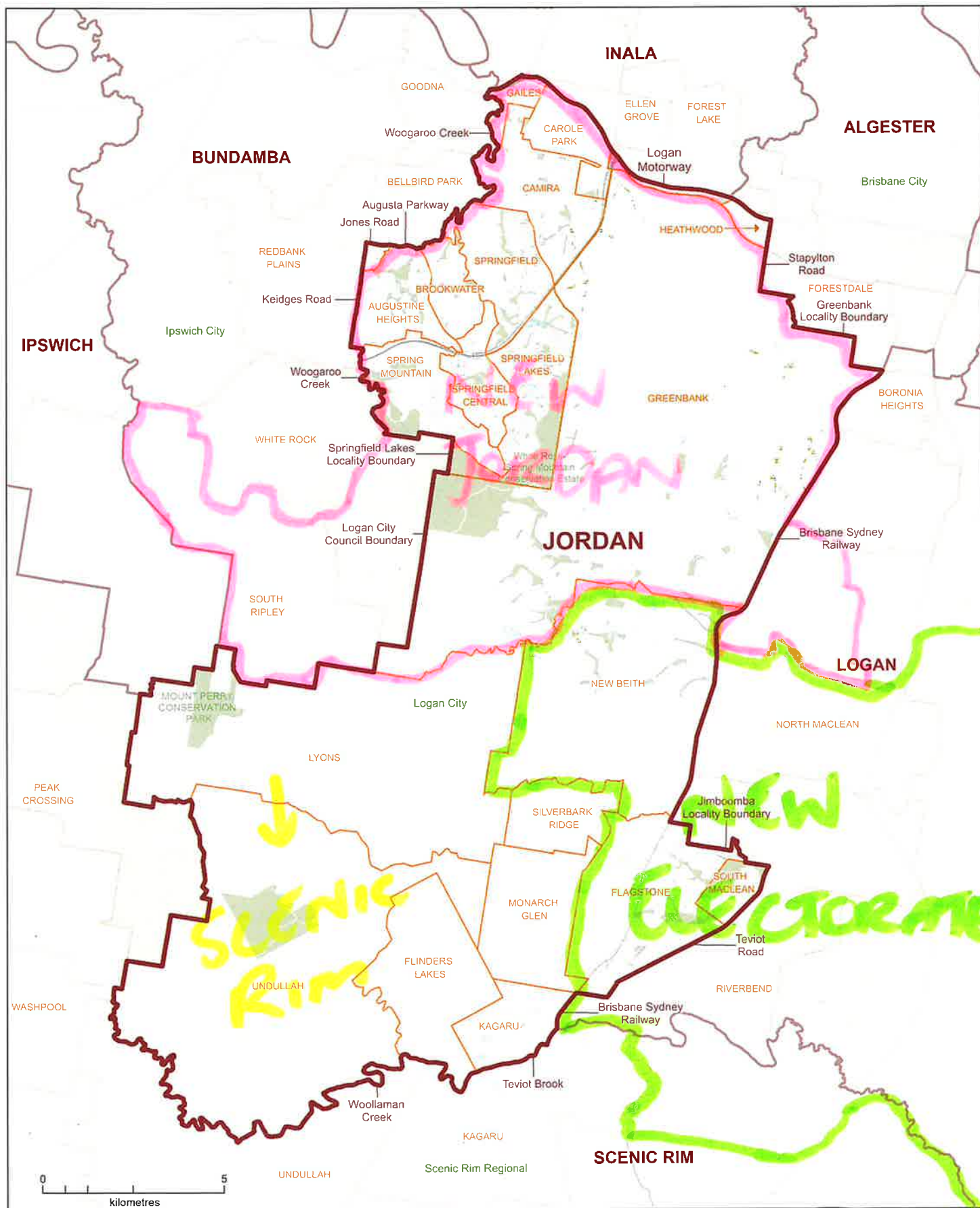
Proposed Composition:

- Suburbs included: Jimboomba, Glenlogan, South Maclean, North Maclean, Stockleigh, Munruben, Riverbend, Flagstone, New Beith.

Rationale:

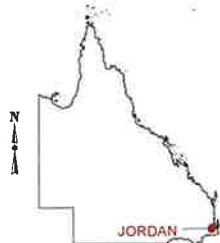
- Population Growth: The Greater Flagstone and Jimboomba corridor is forecast to grow rapidly, making a new electorate essential.
- Community of Interest: These areas are geographically clustered, share common infrastructure, planning zones, and demographic trends.
- Transport & Services: Linked by the Mt Lindesay Highway, these suburbs form a distinct residential and commuter community.





QUEENSLAND STATE ELECTORAL DISTRICTS

ELECTORAL DISTRICT OF
Jordan



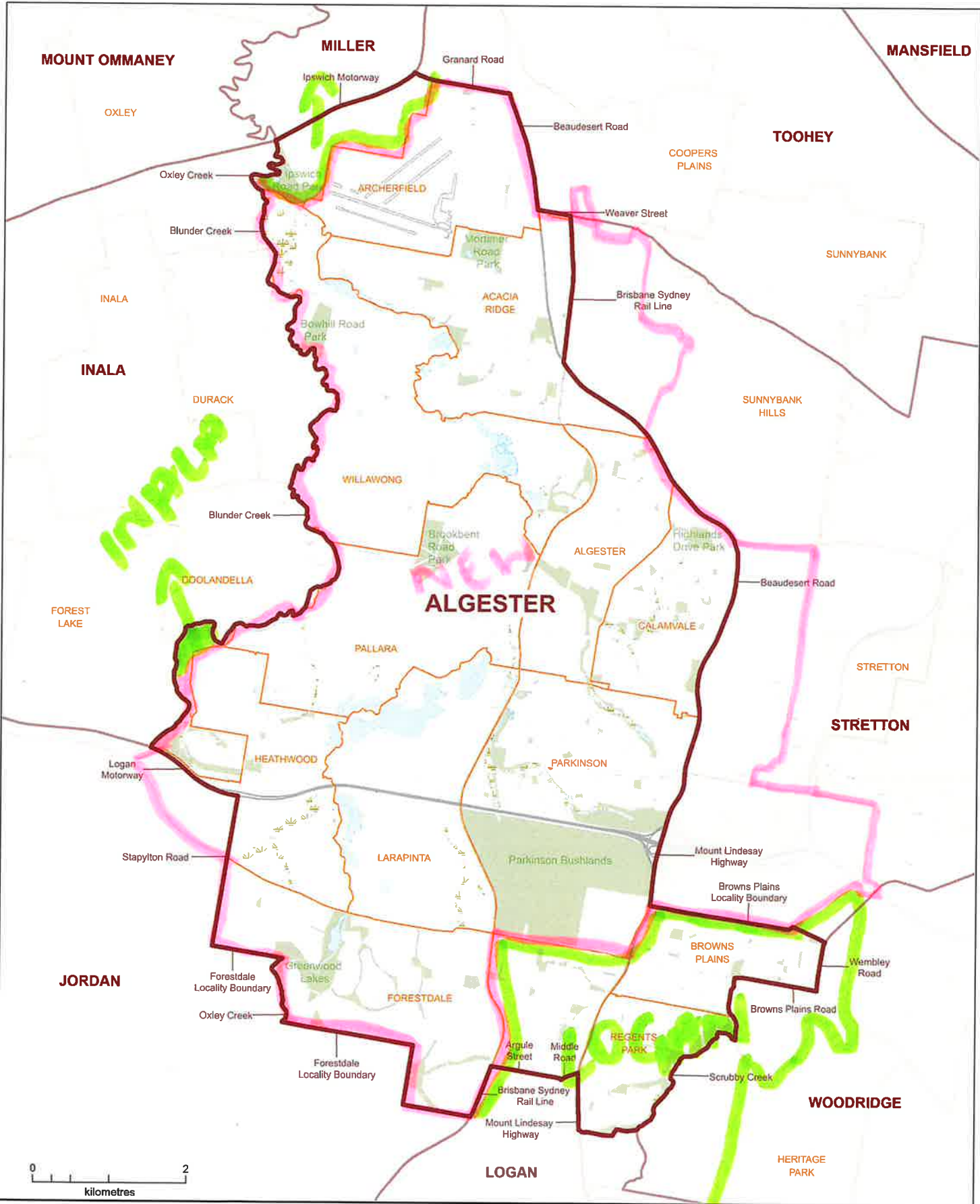
— District Boundary — Locality Boundary — Road — Park / Reserve

This product was created using datasets from various authoritative sources and is intended as a guide only to display current electoral boundaries.

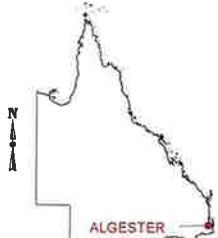
© The State of Queensland - 1995-2024 (Department of Resources)
© Electoral Commission of Queensland 2024

Creative Commons (CC BY)





ELECTORAL DISTRICT OF
Algester



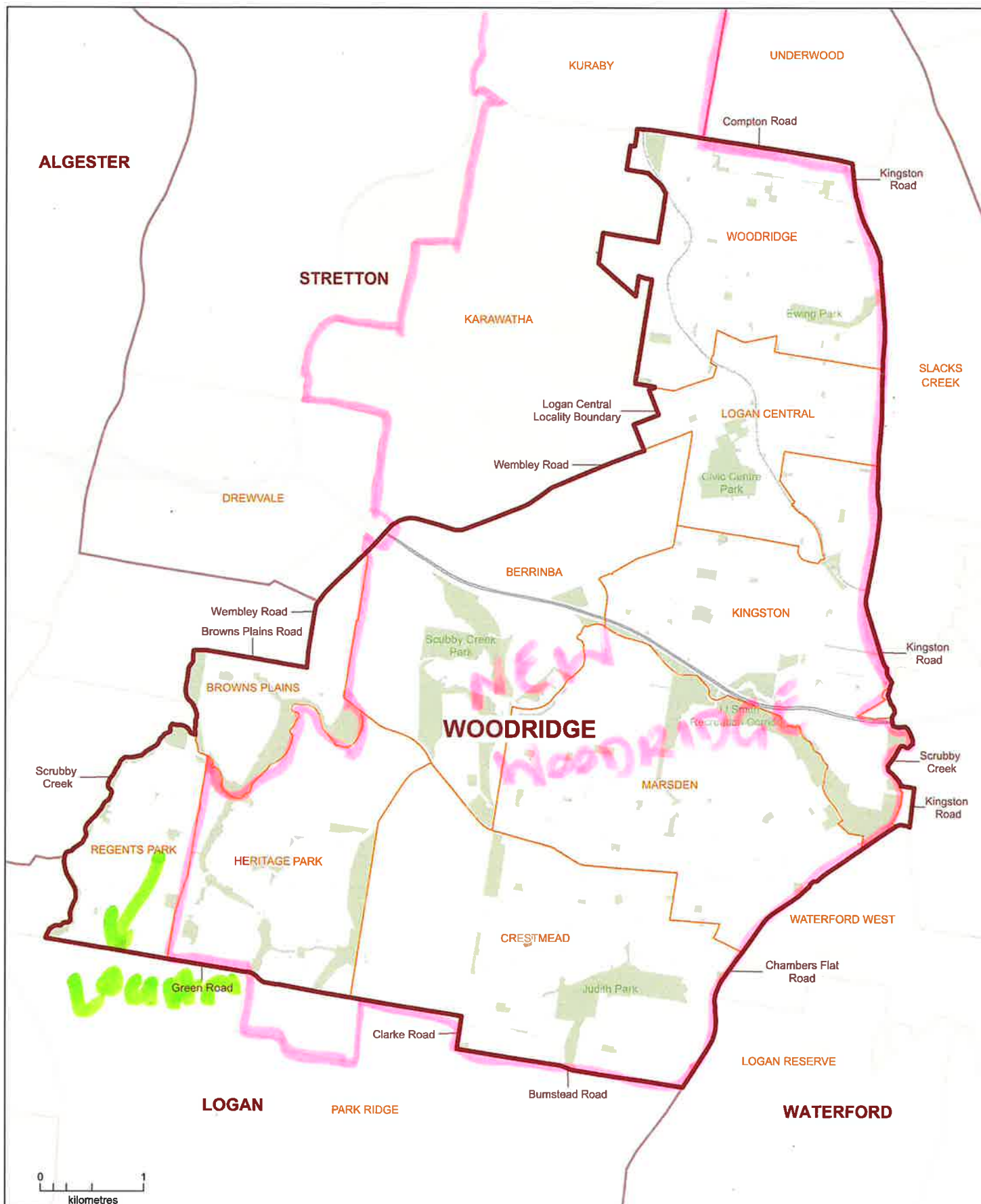
- District Boundary
- Locality Boundary
- Road
- Park / Reserve

This product was created using datasets from various authoritative sources and is intended as a guide only to display current electoral boundaries

© The State of Queensland - 1995-2024 (Department of Resources)
© Electoral Commission of Queensland 2024

Creative Commons (CC BY)



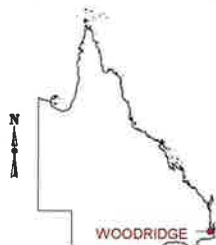


QUEENSLAND STATE ELECTORAL DISTRICTS

ELECTORAL DISTRICT OF
Woodridge



**Electoral
Commission
QUEENSLAND**



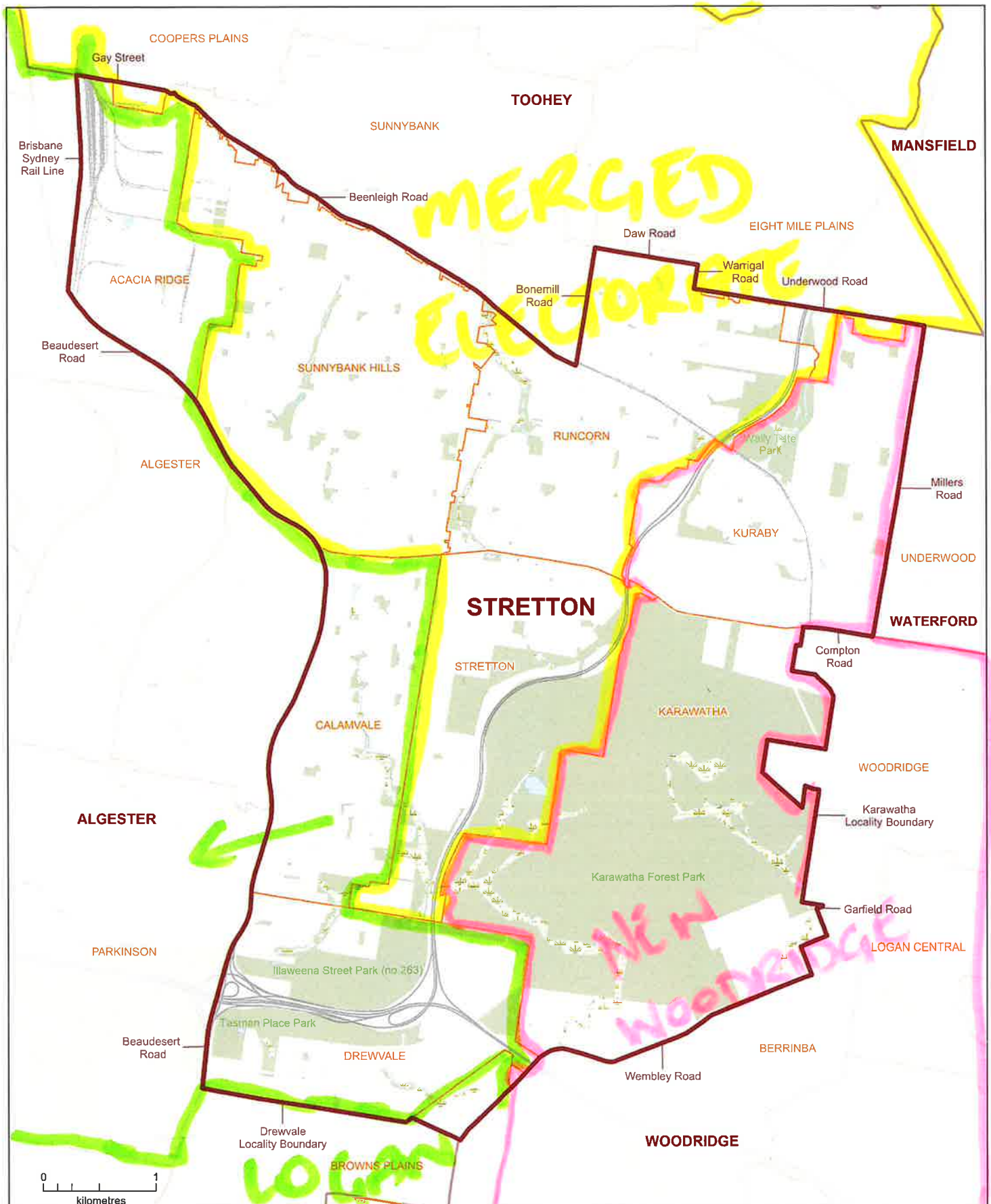
— District Boundary — Locality Boundary — Road — Park / Reserve

This product was created using datasets from various authoritative sources and is intended as a guide only to display current electoral boundaries.

© The State of Queensland - 1995-2024 (Department of Resources)
© Electoral Commission of Queensland 2024

Creative Commons (CC BY)





QUEENSLAND STATE ELECTORAL DISTRICTS

ELECTORAL DISTRICT OF
Stretton



— District Boundary — Locality Boundary - - - Road ■ Park / Reserve

This product was created using datasets from various authoritative sources and is intended as a guide only to display current electoral boundaries

© The State of Queensland - 1995-2024 (Department of Resources)
© Electoral Commission of Queensland 2024

Creative Commons (CC BY)



