

**Submission ID:** O-0546  
**Date Received:** 6/4/26, 9:13 am  
**Name:** Natalie Willcocks  
**Submission Topic:** Electorate Boundaries  
**Electoral District:** Greenbank (formerly Jordan)

**Submission:**

I am writing in relation to the Electoral Commission of Queensland's proposed redistribution and, in particular, the boundary of the newly formed electorate of Greenbank.

I understand and acknowledge the rationale behind the creation of the new Greenbank electorate, including the decision to realign boundaries to separate Springfield from the electorate of Jordan / Greenbank in order to establish this new seat. However, I would like to propose an amendment to the current draft boundaries by removing the suburb of Ripley and the Ipswich LGA component from the electorate of Greenbank.

The proposed electorate of Greenbank already includes the Greater Flagstone Priority Development Area (PDA), which is experiencing high population growth of approximately 1,000 new residents per year. The inclusion of Ripley, another rapidly developing PDA, results in the electorate containing significant growth areas within two separate PDAs. This concentration of high-growth communities is reflected in the projected enrolment figures for Greenbank, which under the proposal are expected to increase from 39,134 (-2.62%) to 53,592 (+19.95%). As a result, the electorate will be well over quota prior to the next redistribution.

Removing Ripley from Greenbank and reallocating it to either the electorate of Redbank, Springfield or Ipswich West would assist in making population growth more sustainable across each electorate involved. This change would also help ensure that Greenbank remains below 20% above quota at the next redistribution, supporting more balanced representation over time. Moving Ripley into the seat of Ipswich West would allow for a more sustainable population growth however it would make more sense to keep it together within the seat of Redbank, however this would make Redbank largely over quota in the next redistribution.

In addition to population considerations, there is also strong community interest and accessibility reasons to remove Ripley from the proposed Greenbank electorate. Ripley is located within the Ipswich local government area, while the remainder of the proposed Greenbank electorate is within Logan City. Aligning the Greenbank electorate boundary with the Logan LGA boundary would create a more cohesive electorate entirely contained within a single local government area. I have included a map where if you follow the green LGA boundary to separate Ripley and the Ipswich LGA areas from the seat of Greenbank.

There is already significant community feedback, including online commentary,

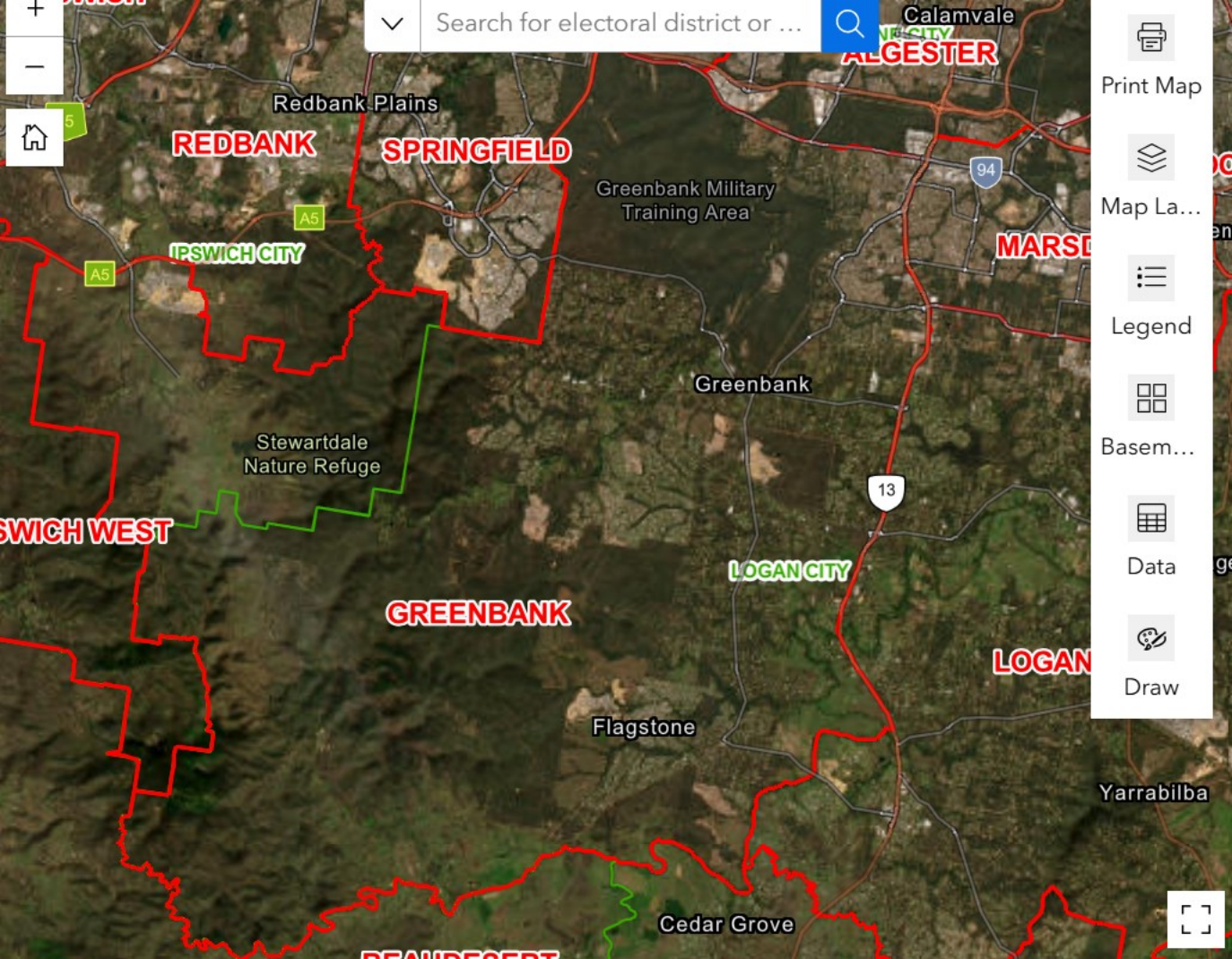
from Ripley residents expressing dissatisfaction with being included in an electorate centered on Greenbank and Flagstone. Many residents have raised concerns about the distance required to travel to visit their State Member of Parliament, which can involve driving considerable distances outside their immediate community and through the seats of Redbank and Springfield to get to Greenbank.

Finally, I wish to express support for the proposed changes to electorate names that better reflect the suburbs and communities they represent. Naming electorates after their largest and most recognisable suburbs is a positive step, as these areas typically contain the majority of the population and best reflect local identity.

For the reasons outlined above, I respectfully request that the Electoral Commission of Queensland consider removing Ripley and the surrounding Ipswich LGA areas from the proposed electorate of Greenbank and realigning the boundary accordingly.

### **Submission Attachments**

Map of Greenbank.jpg



Search for electoral district or ...



ALGESTER



Print Map



Map La...



Legend



Basem...



Data



Draw

