

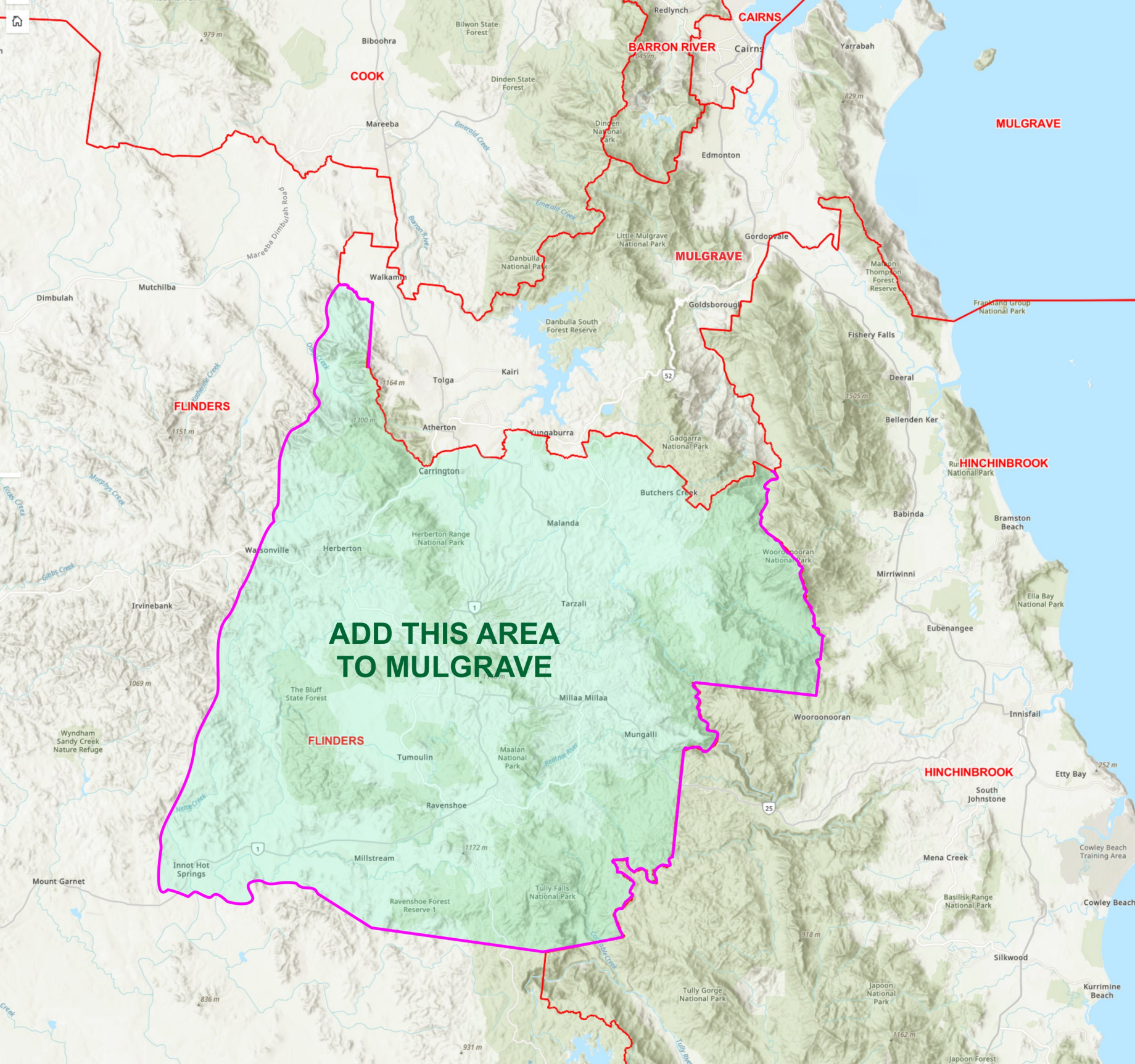
Submission ID: O-0076
Date Received: 12/3/26, 9:01 am
Name: ROBERT STRACHAN
Submission Topic: Electorate Boundaries
Electoral District: Hill

Submission:

THE PROPOSED ABOLISHING OF THE DISTRICT OF HILL IS BAD ENOUGH, BUT THE DISPERSAL AND SPLINTERING OF THE DISTRICT INTO FAR RANGING AND WIDELY DISPARATE REGIONS IS UTTERLY SENSELESS. IF IT IS TO GO AHEAD AT ALL IT WOULD BE MUCH MORE APPROPRIATE TO INCLUDE ALL OF THE SOUTHERN ATHERTON TABLELANDS TO MULGRAVE AS THIS REGION HAS MUCH MORE AFFINITY WITH CAIRNS AND THE COAST THAN THE FAR WEST OF MT. ISA AND THE DISTANT GULF COUNTRY. ECONOMIC, CULTURAL AND ECOLOGICAL. I'M ATTACHING AN ALTERNATIVE SUGGESTION ON YOUR MAP TO ILLUSTRATE MY POINT. I KNOW THESE THINGS ARE POLITICAL AND 'GO BY THE NUMBERS', BUT TO DIVIDE A COMMUNITY THIS WAY IS SURELY NOT A GOOD IDEA.
SINCERELY YOURS, ROBERT STRACHAN

Submission Attachments

QLD. ELECTORAL MAP ALTERNATIVE FOR HILL REDISTRIBUTION 1.jpg



**ADD THIS AREA
TO MULGRAVE**

COOK

BARRON RIVER

CAIRNS

MULGRAVE

FLINDERS

MULGRAVE

HINCHINBROOK

FLINDERS

HINCHINBROOK